



Gulf of Mexico Harmful Algal Bloom Bulletin

Region: Southwest Florida

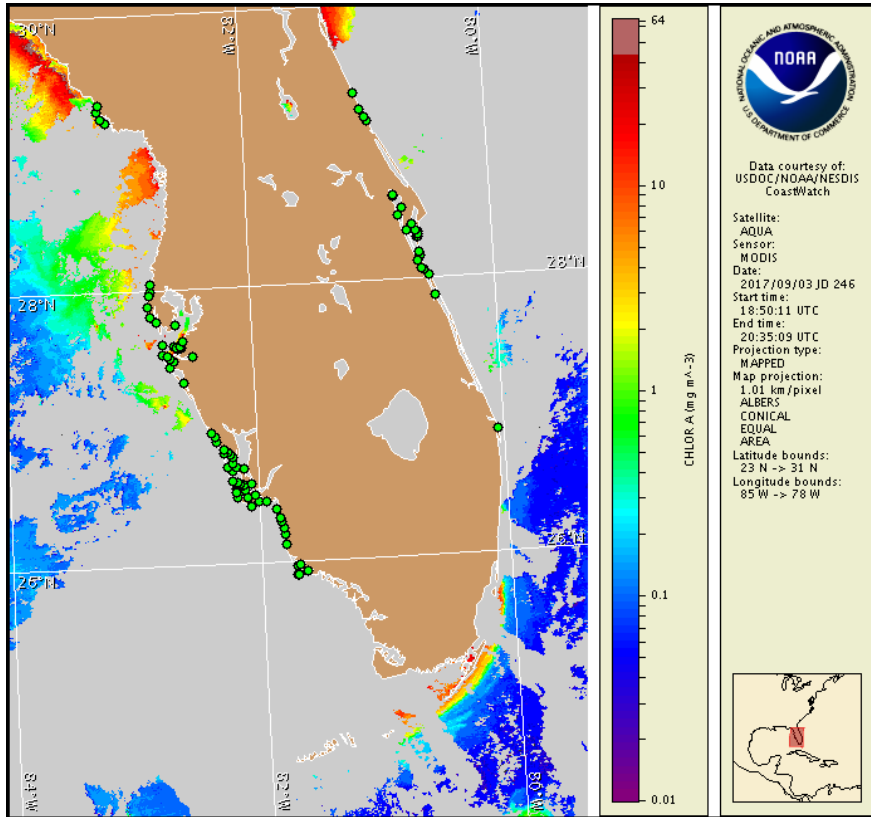
Tuesday, 05 September 2017

NOAA National Ocean Service

NOAA Satellite and Information Service

NOAA National Weather Service

Last bulletin: Monday, August 28, 2017



Satellite chlorophyll image with possible K. brevis HAB areas shown by red polygon(s), when applicable. Points represent cell concentration sampling data from August 26 to September 1: red (high), orange (medium), yellow (low b), brown (low a), blue (very low b), purple (very low a), pink (present), and green (not present). Cell count data are provided by Florida Fish and Wildlife Conservation Commission (FWC) Fish and Wildlife Research Institute. For a list of sample providers and a key to the cell concentration categories, please see the HAB-OFS bulletin guide:

https://tidesandcurrents.noaa.gov/hab/hab_publication/GOMX_HAB_Bulletin_Guide.pdf

Detailed sample information can be obtained through FWC Fish and Wildlife Research Institute at:

<http://myfwc.com/redtidestatus>

To see previous bulletins and forecasts for other Harmful Algal Bloom Bulletin regions, visit at: <https://tidesandcurrents.noaa.gov/hab/gomx.html>

Conditions Report

There is currently no indication of *Karenia brevis* (commonly known as Florida red tide) along the coast of southwest Florida, including the Florida Keys. No respiratory irritation is expected Tuesday September 5 through Monday, September 11. For recent, local observations and data check Mote Marine Laboratory Daily Beach Conditions (<http://visitbeaches.org/>) and the Florida Fish and Wildlife Conservation Commission Red Tide Status (<http://myfwc.com/redtidestatus>).

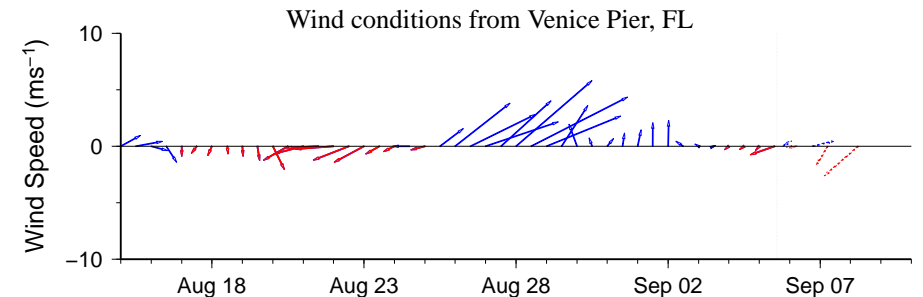
Analysis

Recent samples received from alongshore southwest Florida from Pinellas to Collier counties indicate *Karenia brevis* is not present (FWRI, SCHD, MML, CCPCD; 8/26-9/1). Detailed sample information and a summary of impacts can be obtained through FWC Fish and Wildlife Research Institute at: <http://myfwc.com/redtidestatus>.

Recent ensemble imagery (MODIS Aqua, 9/3 shown left) is completely obscured by clouds alongshore southwest Florida, preventing analysis. In MODIS Aqua imagery from 9/1 (not featured), a patch of elevated to very high chlorophyll (2 to >20 µg/L) with the optical characteristics of *K. brevis* was visible alongshore from southern Pinellas County to central Lee County; likely the result of mixed non-harmful algal blooms that continue to be reported in the region.

Forecasted winds Wednesday evening through Saturday may increase the potential for *K. brevis* bloom formation at the coast.

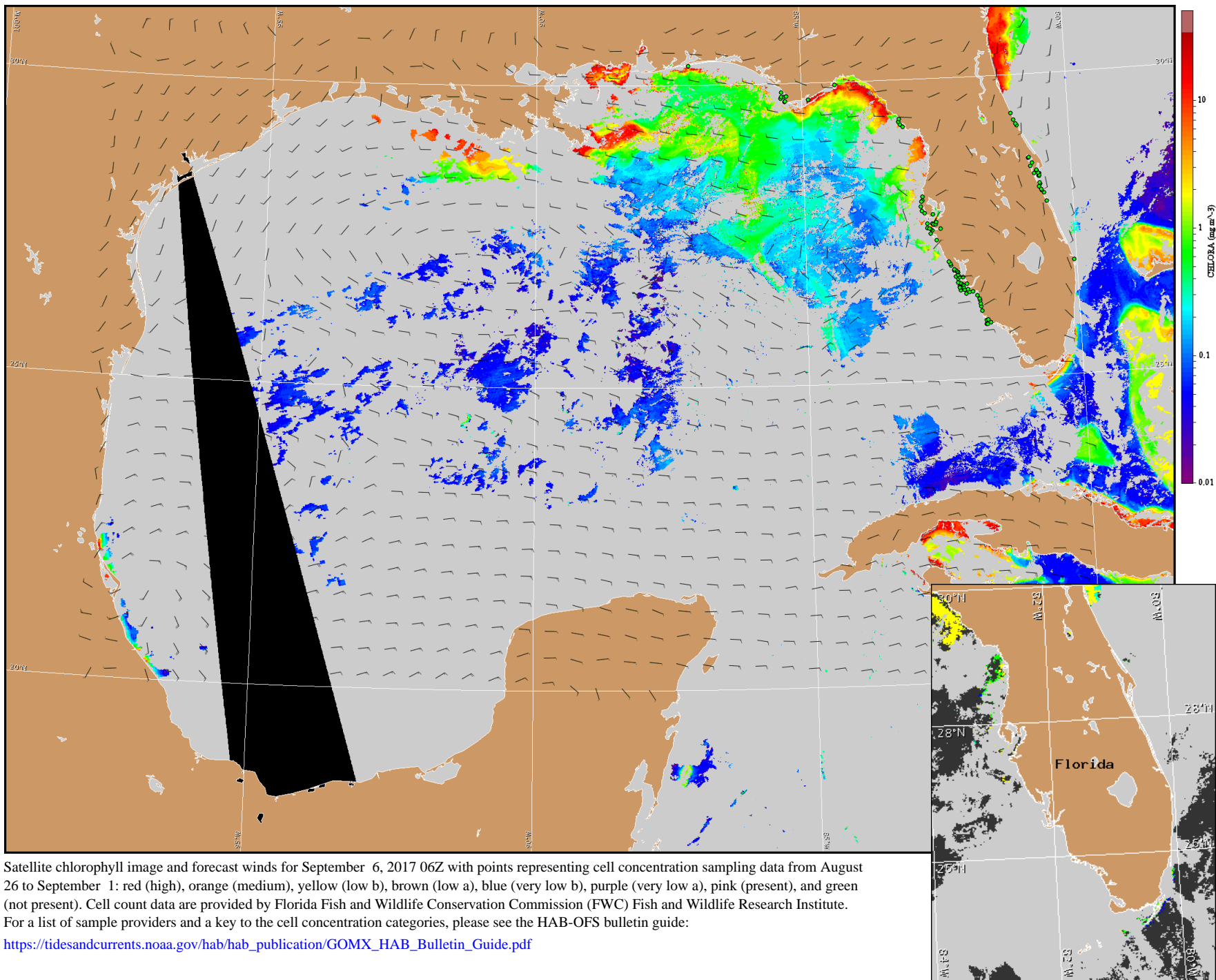
Keeney, Yang



Wind speed and direction are averaged over 12 hours from buoy measurements. Length of line indicates speed; angle indicates direction. Red indicates that the wind direction favors upwelling near the coast. Values to the left of the dotted vertical line are measured values; values to the right are forecasts. Wind observation and forecast data provided by NOAA's National Weather Service (NWS).

Wind Analysis

Englewood to Tarpon Springs (Venice): Varying southeast and north winds (5-10kn, 3-5m/s) today through Wednesday night. North to northeast winds (10-20kn, 5-10m/s) Thursday through Saturday.



Satellite chlorophyll image and forecast winds for September 6, 2017 06Z with points representing cell concentration sampling data from August 26 to September 1: red (high), orange (medium), yellow (low b), brown (low a), blue (very low b), purple (very low a), pink (present), and green (not present). Cell count data are provided by Florida Fish and Wildlife Conservation Commission (FWC) Fish and Wildlife Research Institute. For a list of sample providers and a key to the cell concentration categories, please see the HAB-OFS bulletin guide:

https://tidesandcurrents.noaa.gov/hab/hab_publication/GOMX_HAB_Bulletin_Guide.pdf

Verified and suspected HAB areas shown in red. Other areas with *K. brevis* optical characteristics shown in yellow (see p. 1 analysis for interpretation).