



# Gulf of Mexico Harmful Algal Bloom Bulletin

Region: Southwest Florida

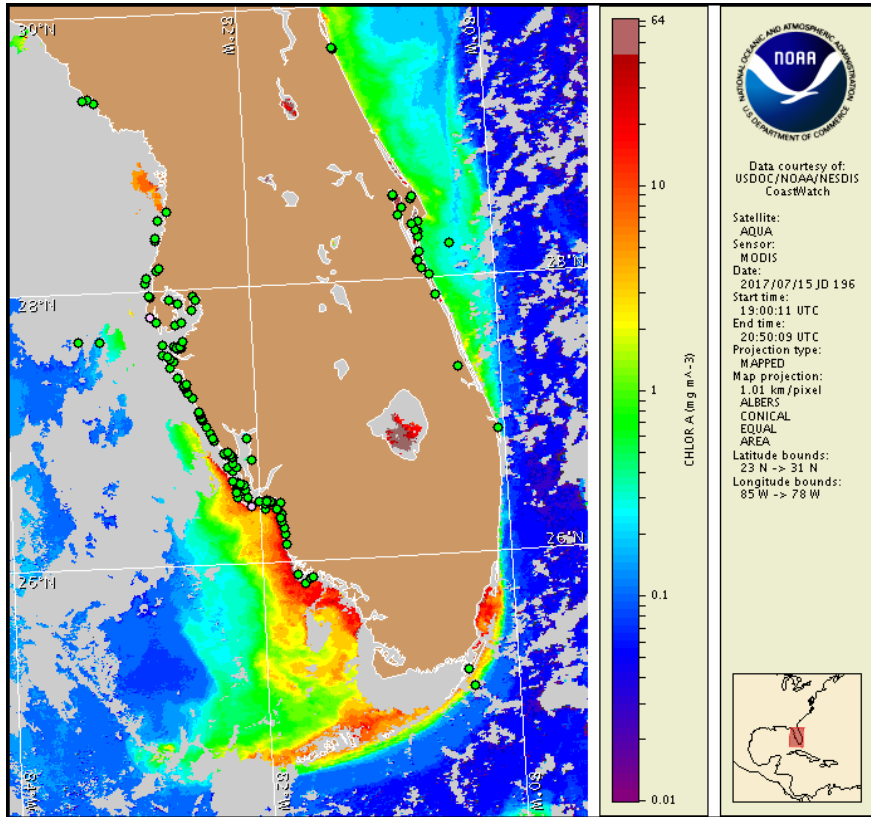
Monday, 17 July 2017

NOAA National Ocean Service

NOAA Satellite and Information Service

NOAA National Weather Service

Last bulletin: Monday, July 10, 2017



Satellite chlorophyll image with possible *K. brevis* HAB areas shown by red polygon(s), when applicable. Points represent cell concentration sampling data from July 7 to 13: red (high), orange (medium), yellow (low b), brown (low a), blue (very low b), purple (very low a), pink (present), and green (not present). Cell count data are provided by Florida Fish and Wildlife Conservation Commission (FWC) Fish and Wildlife Research Institute. For a list of sample providers and a key to the cell concentration categories, please see the HAB-OFS bulletin guide:

[https://tidesandcurrents.noaa.gov/hab/hab\\_publication/GOMX\\_HAB\\_Bulletin\\_Guide.pdf](https://tidesandcurrents.noaa.gov/hab/hab_publication/GOMX_HAB_Bulletin_Guide.pdf)

Detailed sample information can be obtained through FWC Fish and Wildlife Research Institute at:

<http://myfwc.com/redtidestatus>

To see previous bulletins and forecasts for other Harmful Algal Bloom Bulletin regions, visit at: <https://tidesandcurrents.noaa.gov/hab/gomx.html>

## Conditions Report

*Karenia brevis* (commonly known as Florida red tide) ranges from not present to background concentrations along the coast of southwest Florida, including the Florida Keys. No respiratory irritation is expected Monday, July 17 through Monday, July 24. For recent local observations and data, check Mote Marine Laboratory Daily Beach Conditions (<http://visitbeaches.org/>) and the Florida Fish and Wildlife Conservation Commission Red Tide Status (<http://myfwc.com/redtidestatus>).

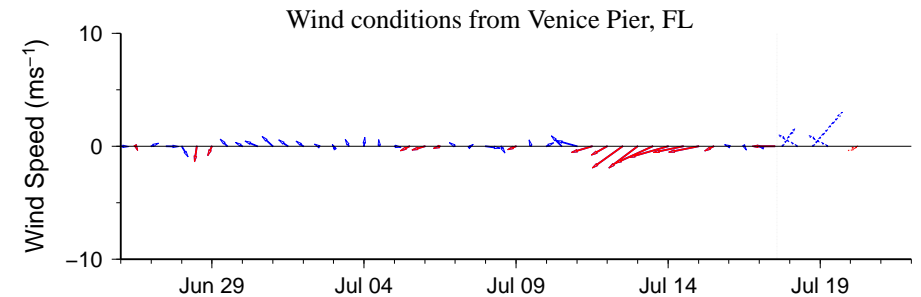
## Analysis

Recent samples received from alongshore southwest Florida, from Pinellas to Monroe counties, all indicate that *Karenia brevis* is not present, with the exception of background concentrations collected from Pinellas and Lee counties (FWRI, MML, SCHD; 7/7-7/13). Detailed sample information and a summary of impacts can be obtained through FWC Fish and Wildlife Research Institute at: <http://myfwc.com/redtidestatus>.

Recent ensemble imagery (MODIS Aqua, 7/15) obscured by clouds along- and offshore southwest Florida from Pinellas to Charlotte counties, limiting analysis. Patches of elevated to very high chlorophyll (2 to >20 µg/L) are visible alongshore southwest Florida from Lee to Collier counties with the optical characteristics of *K. brevis*, likely the result of mixed non-harmful algal blooms that continue to be reported in the region.

Harmful algal bloom formation at the coast of southwest Florida is not expected today through Monday, July 24.

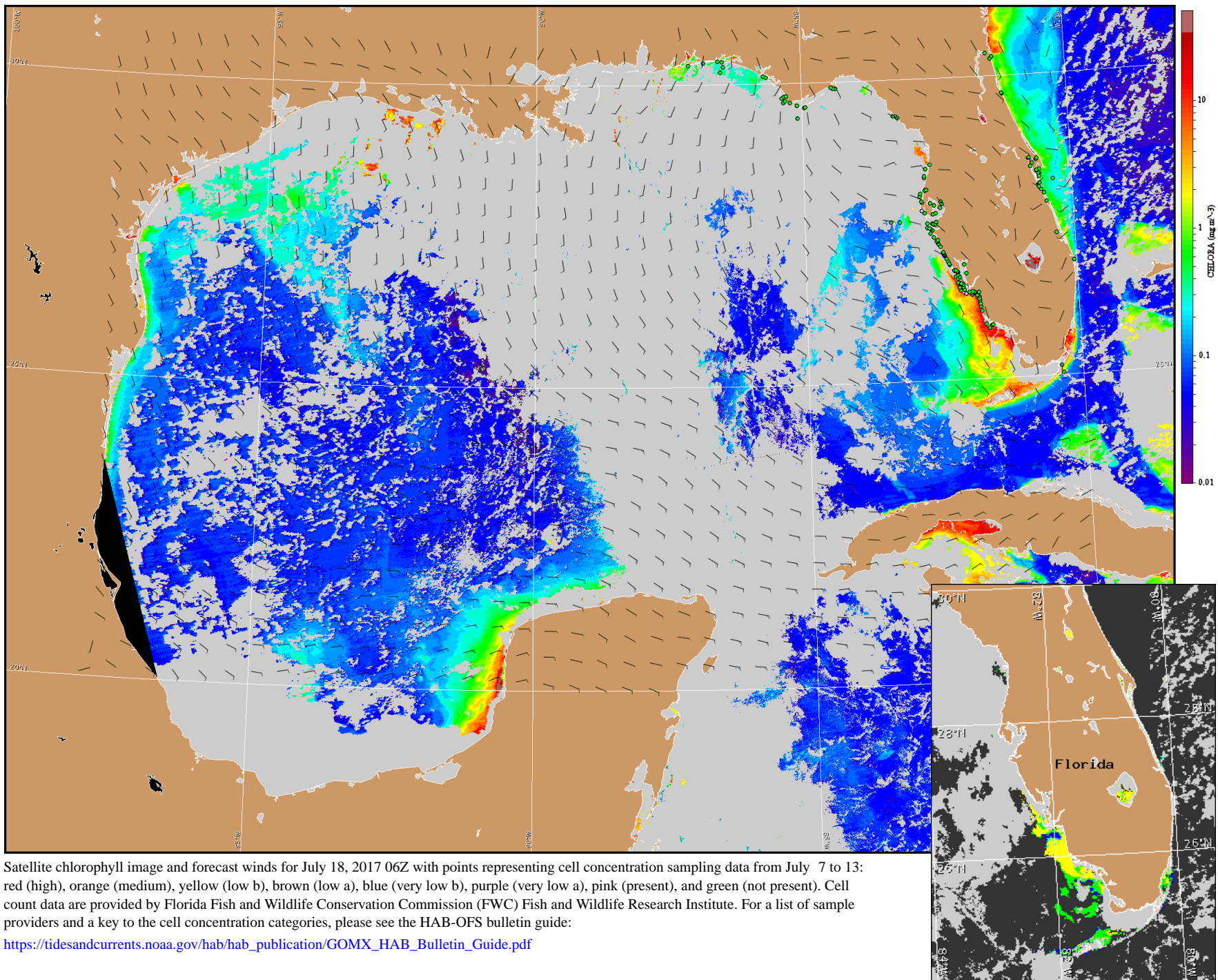
Keeney, Kavanaugh



Wind speed and direction are averaged over 12 hours from buoy measurements. Length of line indicates speed; angle indicates direction. Red indicates that the wind direction favors upwelling near the coast. Values to the left of the dotted vertical line are measured values; values to the right are forecasts. Wind observation and forecast data provided by NOAA's National Weather Service (NWS).

## Wind Analysis

**Englewood to Tarpon Springs (Venice):** Variable winds (5-10kn, 3-5m/s) today through Tuesday night. Northwest to north winds (5kn, 3m/s) Wednesday through Friday.



Satellite chlorophyll image and forecast winds for July 18, 2017 06Z with points representing cell concentration sampling data from July 7 to 13: red (high), orange (medium), yellow (low b), brown (low a), blue (very low b), purple (very low a), pink (present), and green (not present). Cell count data are provided by Florida Fish and Wildlife Conservation Commission (FWC) Fish and Wildlife Research Institute. For a list of sample providers and a key to the cell concentration categories, please see the HAB-OFS bulletin guide:

[https://tidesandcurrents.noaa.gov/hab/hab\\_publication/GOMX\\_HAB\\_Bulletin\\_Guide.pdf](https://tidesandcurrents.noaa.gov/hab/hab_publication/GOMX_HAB_Bulletin_Guide.pdf)

Verified and suspected HAB areas shown in red. Other areas with *K. brevis* optical characteristics shown in yellow (see p. 1 analysis for interpretation).