



# Gulf of Mexico Harmful Algal Bloom Bulletin

Region: Southwest Florida

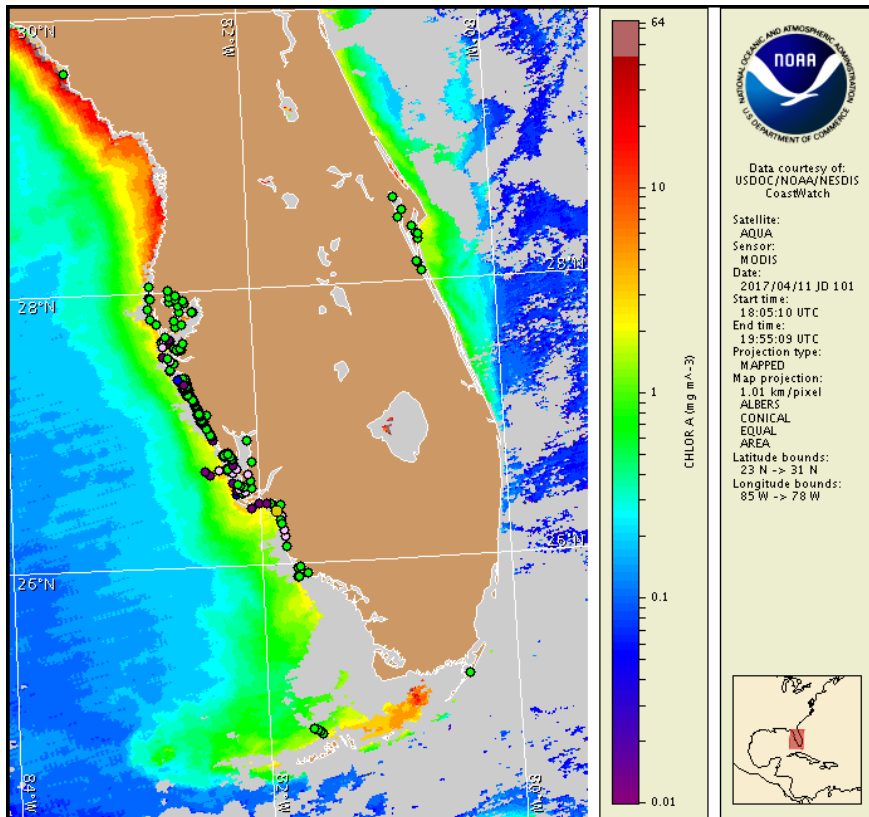
Thursday, 13 April 2017

NOAA National Ocean Service

NOAA Satellite and Information Service

NOAA National Weather Service

Last bulletin: Monday, April 10, 2017



Satellite chlorophyll image with possible *K. brevis* HAB areas shown by red polygon(s), when applicable. Points represent cell concentration sampling data from April 3 to 12: red (high), orange (medium), yellow (low b), brown (low a), blue (very low b), purple (very low a), pink (present), and green (not present). Cell count data are provided by Florida Fish and Wildlife Conservation Commission (FWC) Fish and Wildlife Research Institute. For a list of sample providers and a key to the cell concentration categories, please see the HAB-OFS bulletin guide:

[http://tidesandcurrents.noaa.gov/hab/hab\\_publication/habfs\\_bulletin\\_guide.pdf](http://tidesandcurrents.noaa.gov/hab/hab_publication/habfs_bulletin_guide.pdf)

Detailed sample information can be obtained through FWC Fish and Wildlife Research Institute at:

<http://myfwc.com/redtidestatus>

To see previous bulletins and forecasts for other Harmful Algal Bloom Bulletin regions, visit at: <http://tidesandcurrents.noaa.gov/hab/bulletins.html>

## Conditions Report

Not present to medium concentrations of *Karenia brevis* (commonly known as Florida red tide) are present along- and offshore portions of southwest Florida and not present in the Florida Keys. *K. brevis* concentrations are patchy in nature and levels of respiratory irritation will vary locally based upon nearby bloom concentrations, ocean currents, and wind speed and direction. The highest level of potential respiratory irritation forecast for Thursday, April 13 through Monday, April 17 is listed below:

**County Region: Forecast (Duration)**

**Southern Pinellas, bay regions: Very Low (Th-M)**

**Northern Manatee, bay regions: Very Low (Th-M)**

**Southern Manatee: Very Low (Th-M)**

**Southern Manatee, bay regions: Very Low (Th-M)**

**Northern Sarasota: Low (Th-M)**

**Northern Sarasota, bay regions: Low (Th-M)**

**Southern Sarasota: Low (Th-M)**

**Southern Sarasota, bay regions: Low (Th-M)**

**Northern Charlotte: Low (Th-M)**

**Southern Charlotte: Low (Th-M)**

**Southern Charlotte, bay regions: Low (Th-M)**

**Northern Lee: Very Low (Th-Su), Low (M)**

**Northern Lee, bay regions: Low (Th-M)**

**Central Lee: Very Low (Th-M)**

**Central Lee, bay regions: Very Low (Th-M)**

**Southern Lee: Very Low (Th-Su), Low (M)**

**Southern Lee, bay regions: Very Low (Th-M)**

**All Other SWFL County Regions: None expected (Th-M)**

Check [https://tidesandcurrents.noaa.gov/hab/beach\\_conditions.html](https://tidesandcurrents.noaa.gov/hab/beach_conditions.html) for recent, local observations. Health information, from the Florida Department of Health and other agencies, is available at [https://tidesandcurrents.noaa.gov/hab/hab\\_health\\_info.html](https://tidesandcurrents.noaa.gov/hab/hab_health_info.html). Dead fish have been reported in Lee County.

## Analysis

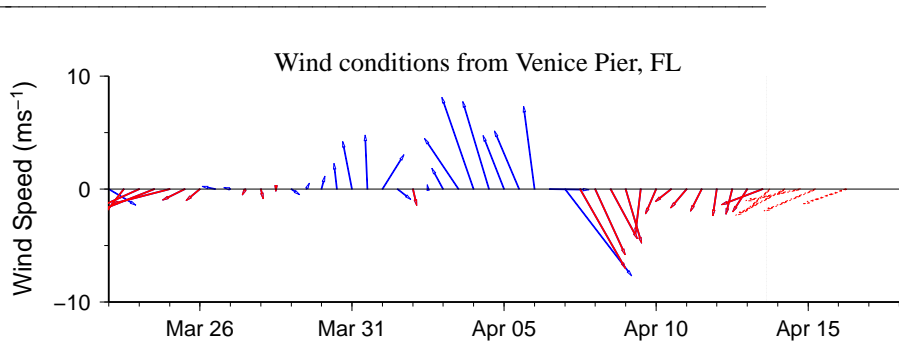
Recent samples collected alongshore the coast of southwest Florida from Pinellas to Monroe counties indicate *Karenia brevis* is present in up to 'low a' concentrations along the coast of southwest Florida, with the highest concentrations present alongshore northern Sarasota County (FWRI, MML, SCHD, CCPC; 4/8-4/12). Detailed sample information and a summary of impacts can be obtained through FWC Fish and Wildlife Research Institute at: <http://myfwc.com/redtidestatus>.

No patches of elevated chlorophyll with the optical characteristics of *K. brevis* were visible along- and offshore the coast of southwest Florida from Pinellas to Sarasota counties (MODIS Aqua, 4/12; not shown), or along- and offshore from Charlotte to Lee counties (MODIS Aqua, 4/11; shown left).

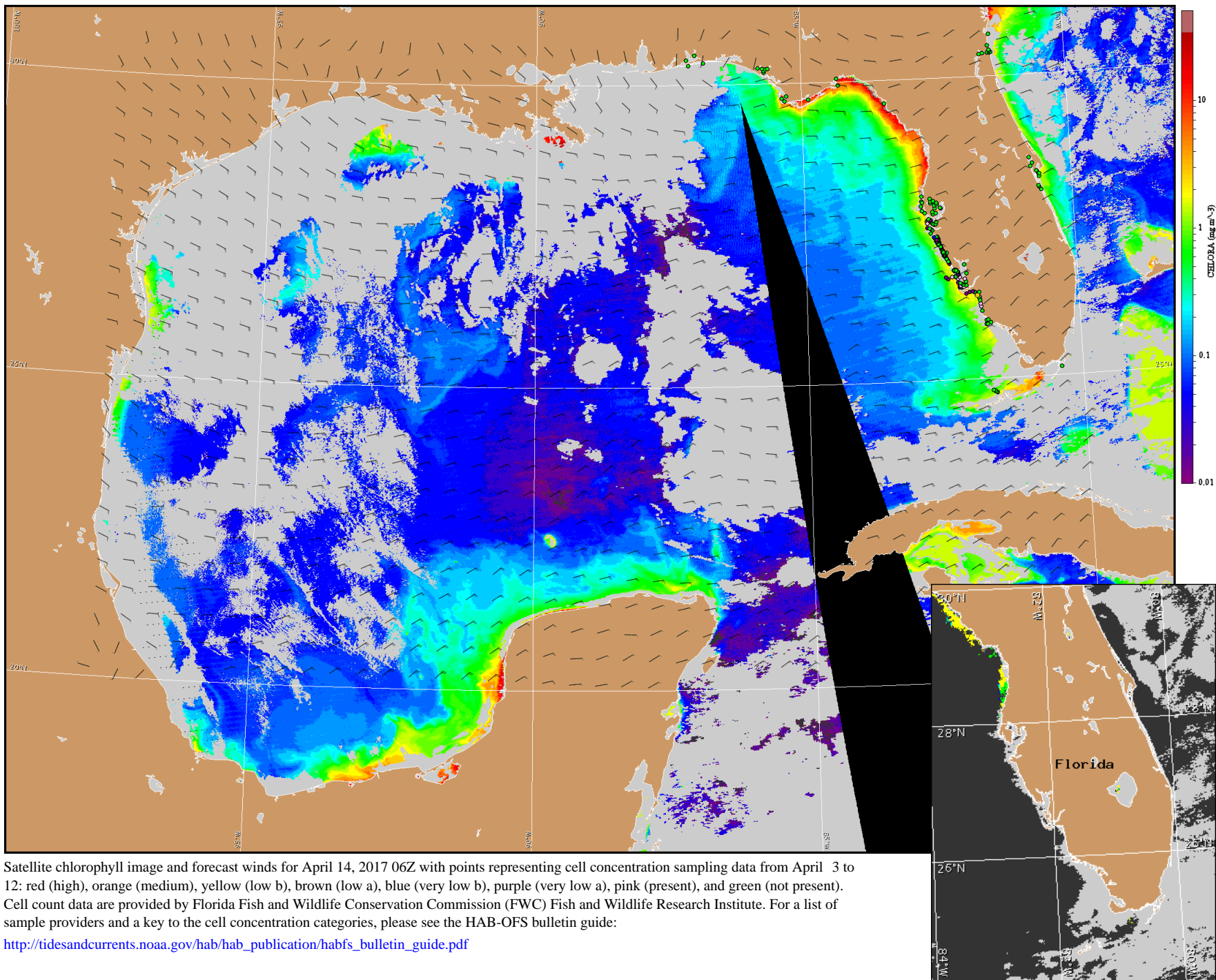
Offshore winds forecasted today through Saturday may minimize the potential for respiratory irritation alongshore southwest Florida. -Keeney, Kavanaugh

## Wind Analysis

**Englewood to Tarpon Springs (Venice):** North to northeast winds (5-20kn, 3-10m/s) today through Friday afternoon, becoming east winds (5-20kn) Friday evening through Saturday night. Variable winds (5-15kn) Sunday and Monday.



Wind speed and direction are averaged over 12 hours from buoy measurements. Length of line indicates speed; angle indicates direction. Red indicates that the wind direction favors upwelling near the coast. Values to the left of the dotted vertical line are measured values; values to the right are forecasts. Wind observation and forecast data provided by NOAA's National Weather Service (NWS).



Satellite chlorophyll image and forecast winds for April 14, 2017 06Z with points representing cell concentration sampling data from April 3 to 12: red (high), orange (medium), yellow (low b), brown (low a), blue (very low b), purple (very low a), pink (present), and green (not present). Cell count data are provided by Florida Fish and Wildlife Conservation Commission (FWC) Fish and Wildlife Research Institute. For a list of sample providers and a key to the cell concentration categories, please see the HAB-OFS bulletin guide:

[http://tidesandcurrents.noaa.gov/hab/hab\\_publication/habfs\\_bulletin\\_guide.pdf](http://tidesandcurrents.noaa.gov/hab/hab_publication/habfs_bulletin_guide.pdf)

Verified and suspected HAB areas shown in red. Other areas with *K. brevis* optical characteristics shown in yellow (see p. 1 analysis for interpretation).