



## Gulf of Mexico Harmful Algal Bloom Bulletin

Region: Southwest Florida

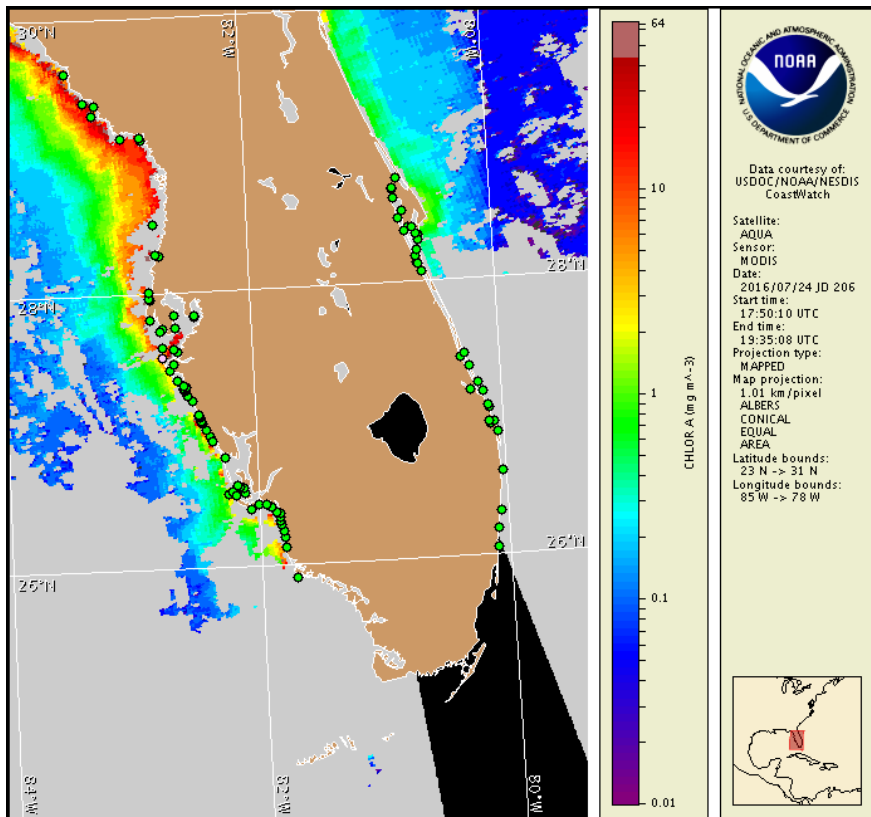
Monday, 25 July 2016

NOAA National Ocean Service

NOAA Satellite and Information Service

NOAA National Weather Service

Last bulletin: Monday, July 18, 2016



Satellite chlorophyll image with possible *K. brevis* HAB areas shown by red polygon(s), when applicable. Points represent cell concentration sampling data from July 15 to 22: red (high), orange (medium), yellow (low b), brown (low a), blue (very low b), purple (very low a), pink (present), and green (not present). Cell count data are provided by Florida Fish and Wildlife Conservation Commission (FWC) Fish and Wildlife Research Institute. For a list of sample providers and a key to the cell concentration categories, please see the HAB-OFS bulletin guide:

[http://tidesandcurrents.noaa.gov/hab/hab\\_publication/habfs\\_bulletin\\_guide.pdf](http://tidesandcurrents.noaa.gov/hab/hab_publication/habfs_bulletin_guide.pdf)

Detailed sample information can be obtained through FWC Fish and Wildlife Research Institute at:

<http://myfwc.com/redtidestatus>

To see previous bulletins and forecasts for other Harmful Algal Bloom Bulletin regions, visit at: <http://tidesandcurrents.noaa.gov/hab/bulletins.html>

## Conditions Report

*Karenia brevis* (commonly known as Florida red tide) ranges from not present to background concentrations along the coast of southwest Florida, and is not present in the Florida Keys. No respiratory irritation is expected alongshore southwest Florida Monday, July 25 through Monday, August 1.

Check [http://tidesandcurrents.noaa.gov/hab/beach\\_conditions.html](http://tidesandcurrents.noaa.gov/hab/beach_conditions.html) for recent, local observations.

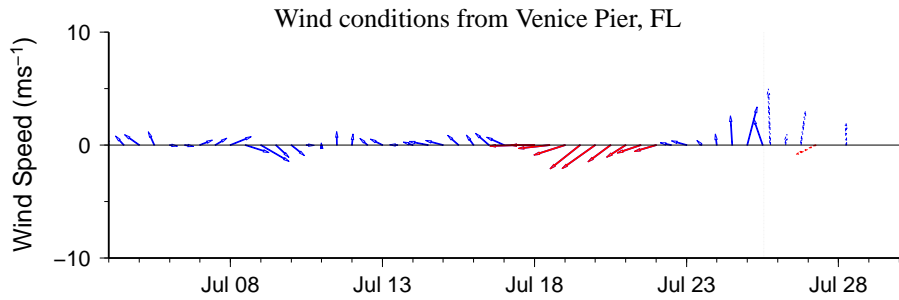
## Analysis

Recent samples received from along- and offshore southwest Florida from Pinellas to Collier counties all indicate that *Karenia brevis* is not present, with the exception of two samples with background concentrations collected at Anna Maria Island Rod & Reel Pier and at Longboat Pass Boat Ramp in Manatee County (FWRI, MML, SCHD, CCENRD; 7/15-7/22). Detailed sample information and a summary of impacts can be obtained through FWC Fish and Wildlife Research Institute at: <http://myfwc.com/redtidestatus>.

Recent ensemble imagery (MODIS Aqua, 7/24) is partially obscured by clouds alongshore southwest Florida from Pinellas to southern Collier counties and is completely obscured by clouds from southern Collier to Monroe counties, limiting analysis. Patches of elevated to very high chlorophyll (2 to > 20  $\mu\text{g}/\text{L}$ ) with the optical characteristics of *K. brevis* are present from Pinellas to Charlotte counties.

Harmful algal bloom formation at the coast of southwest Florida is not expected today through Monday, August 1.

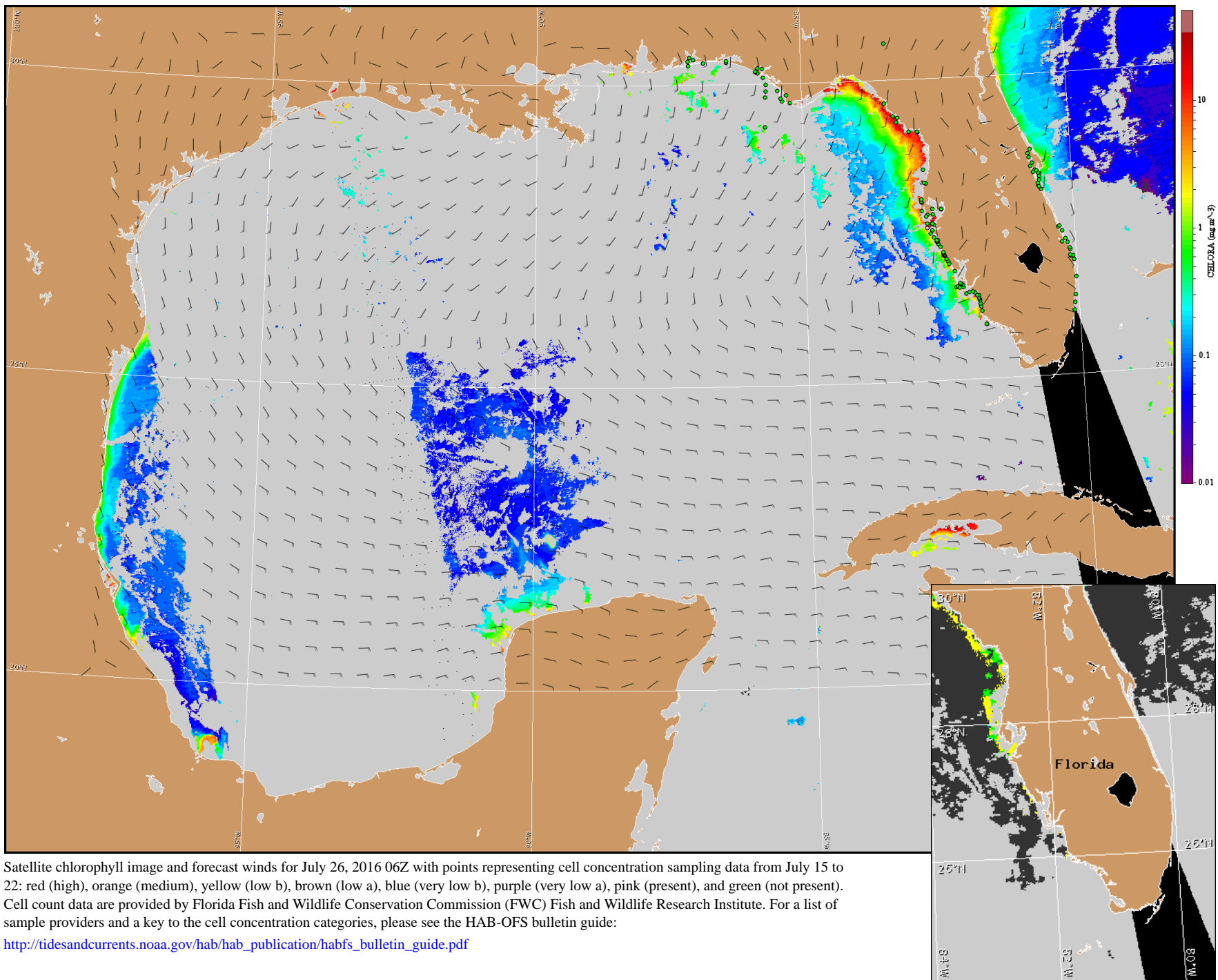
Lalime, Davis



Wind speed and direction are averaged over 12 hours from buoy measurements. Length of line indicates speed; angle indicates direction. Red indicates that the wind direction favors upwelling near the coast. Values to the left of the dotted vertical line are measured values; values to the right are forecasts. Wind observation and forecast data provided by NOAA's National Weather Service (NWS).

## Wind Analysis

South winds (10kn, 5m/s) today through Tuesday becoming southwest (5-10kn, 3-5m/s) Tuesday afternoon and evening. Southeast winds (10kn) Wednesday becoming southwest in the afternoon. Northwest to north winds (10kn) Wednesday night. East to northeast winds (5kn, 3m/s) Thursday becoming southeast (10kn) Thursday night and Friday.



Satellite chlorophyll image and forecast winds for July 26, 2016 06Z with points representing cell concentration sampling data from July 15 to 22: red (high), orange (medium), yellow (low b), brown (low a), blue (very low b), purple (very low a), pink (present), and green (not present). Cell count data are provided by Florida Fish and Wildlife Conservation Commission (FWC) Fish and Wildlife Research Institute. For a list of sample providers and a key to the cell concentration categories, please see the HAB-OFS bulletin guide:

[http://tidesandcurrents.noaa.gov/hab/hab\\_publication/habfs\\_bulletin\\_guide.pdf](http://tidesandcurrents.noaa.gov/hab/hab_publication/habfs_bulletin_guide.pdf)

Verified and suspected HAB areas shown in red. Other areas with *K. brevis* optical characteristics shown in yellow (see p. 1 analysis for interpretation).