



# Gulf of Mexico Harmful Algal Bloom Bulletin

Region: Southwest Florida

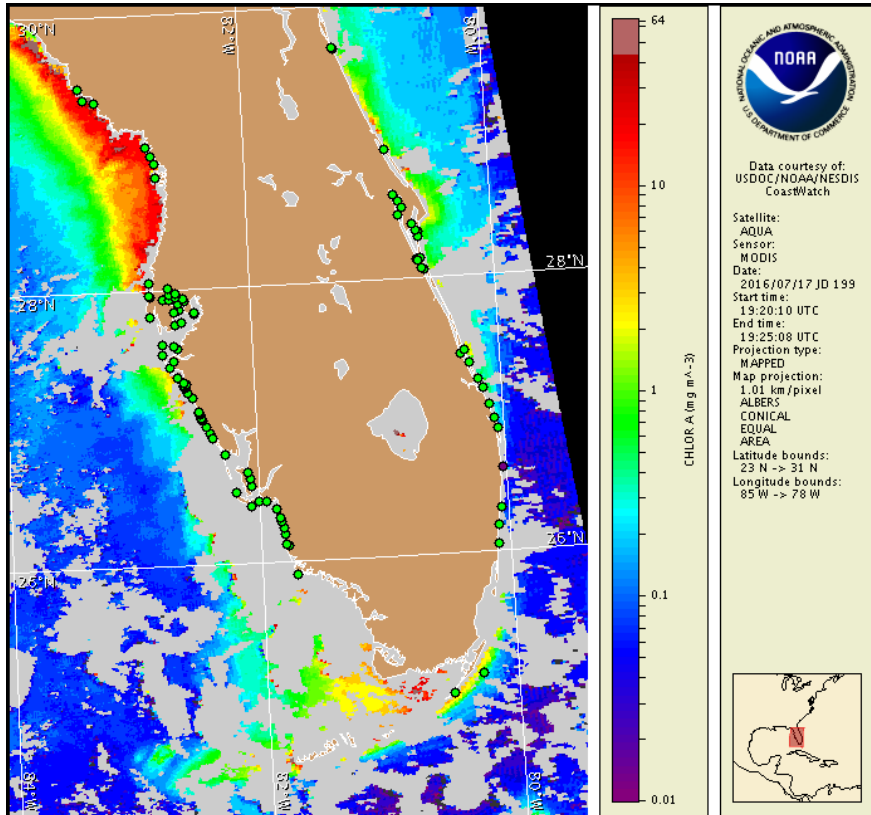
Monday, 18 July 2016

NOAA National Ocean Service

NOAA Satellite and Information Service

NOAA National Weather Service

Last bulletin: Monday, July 11, 2016



Satellite chlorophyll image with possible *K. brevis* HAB areas shown by red polygon(s), when applicable. Points represent cell concentration sampling data from July 8 to 15: red (high), orange (medium), yellow (low b), brown (low a), blue (very low b), purple (very low a), pink (present), and green (not present). Cell count data are provided by Florida Fish and Wildlife Conservation Commission (FWC) Fish and Wildlife Research Institute. For a list of sample providers and a key to the cell concentration categories, please see the HAB-OFS bulletin guide:

[http://tidesandcurrents.noaa.gov/hab/hab\\_publication/habfs\\_bulletin\\_guide.pdf](http://tidesandcurrents.noaa.gov/hab/hab_publication/habfs_bulletin_guide.pdf)

Detailed sample information can be obtained through FWC Fish and Wildlife Research Institute at:

<http://myfwc.com/redtidestatus>

To see previous bulletins and forecasts for other Harmful Algal Bloom Bulletin regions, visit at: <http://tidesandcurrents.noaa.gov/hab/bulletins.html>

## Conditions Report

There is currently no indication of *Karenia brevis* (commonly known as Florida red tide) along the coast of southwest Florida, including the Florida Keys. No respiratory irritation is expected Monday, July 18 through Monday, July 25.

Check [http://tidesandcurrents.noaa.gov/hab/beach\\_conditions.html](http://tidesandcurrents.noaa.gov/hab/beach_conditions.html) for recent, local observations.

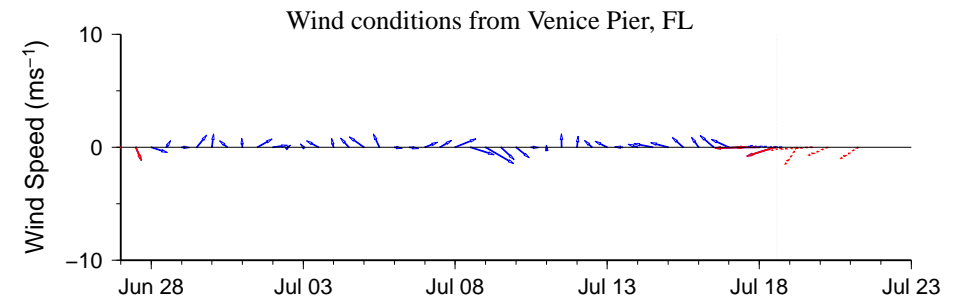
## Analysis

Recent samples received from along- and offshore southwest Florida from Pinellas to Monroe counties, including the Florida Keys, all indicate that *Karenia brevis* is not present (FWRI, MML, SCHD, CCENRD; 7/8-7/15). Detailed sample information and a summary of impacts can be obtained through FWC Fish and Wildlife Research Institute at: <http://myfwc.com/redtidestatus>.

Recent ensemble imagery (MODIS Aqua, 7/17) is obscured by clouds alongshore most of southwest Florida, limiting analysis. A patch of elevated chlorophyll (1 to 7 µg/L) with the optical characteristics of *K. brevis* is present offshore northern Sarasota County.

Harmful algal bloom formation at the coast of southwest Florida is not expected today through Monday, July 25.

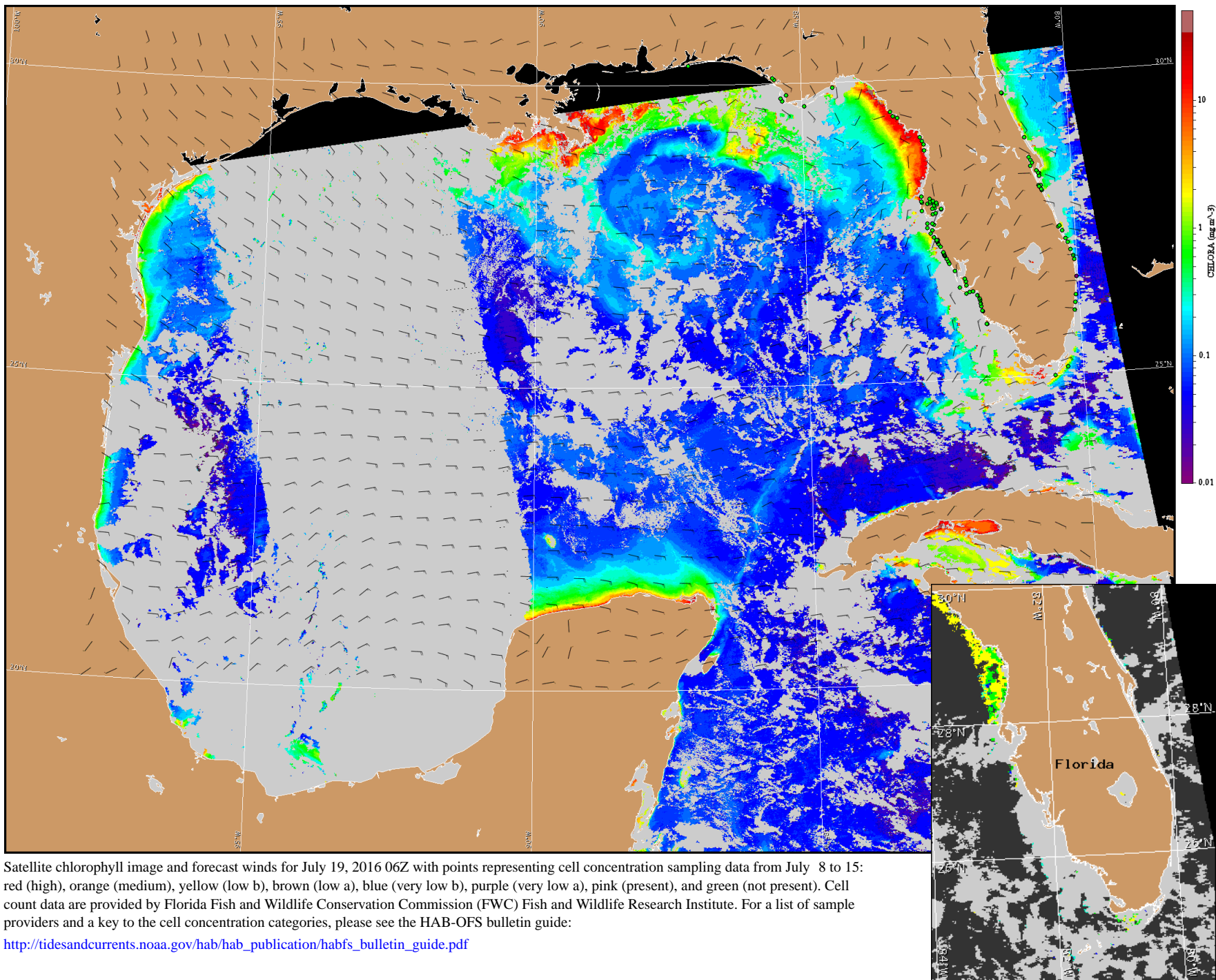
Yang, Lalime



Wind speed and direction are averaged over 12 hours from buoy measurements. Length of line indicates speed; angle indicates direction. Red indicates that the wind direction favors upwelling near the coast. Values to the left of the dotted vertical line are measured values; values to the right are forecasts. Wind observation and forecast data provided by NOAA's National Weather Service (NWS).

## Wind Analysis

**Englewood to Tarpon Springs (Venice):** East to northeast winds (5-15kn, 3-8m/s) today through Tuesday. East winds (5-10kn, 3-5m/s) Wednesday and Thursday. Southeast winds (5kn, 3m/s) Friday becoming southwest Friday afternoon.



Satellite chlorophyll image and forecast winds for July 19, 2016 06Z with points representing cell concentration sampling data from July 8 to 15: red (high), orange (medium), yellow (low b), brown (low a), blue (very low b), purple (very low a), pink (present), and green (not present). Cell count data are provided by Florida Fish and Wildlife Conservation Commission (FWC) Fish and Wildlife Research Institute. For a list of sample providers and a key to the cell concentration categories, please see the HAB-OFS bulletin guide:

[http://tidesandcurrents.noaa.gov/hab/hab\\_publication/habfs\\_bulletin\\_guide.pdf](http://tidesandcurrents.noaa.gov/hab/hab_publication/habfs_bulletin_guide.pdf)

Verified and suspected HAB areas shown in red. Other areas with *K. brevis* optical characteristics shown in yellow (see p. 1 analysis for interpretation).