



Gulf of Mexico Harmful Algal Bloom Bulletin

Region: Southwest Florida

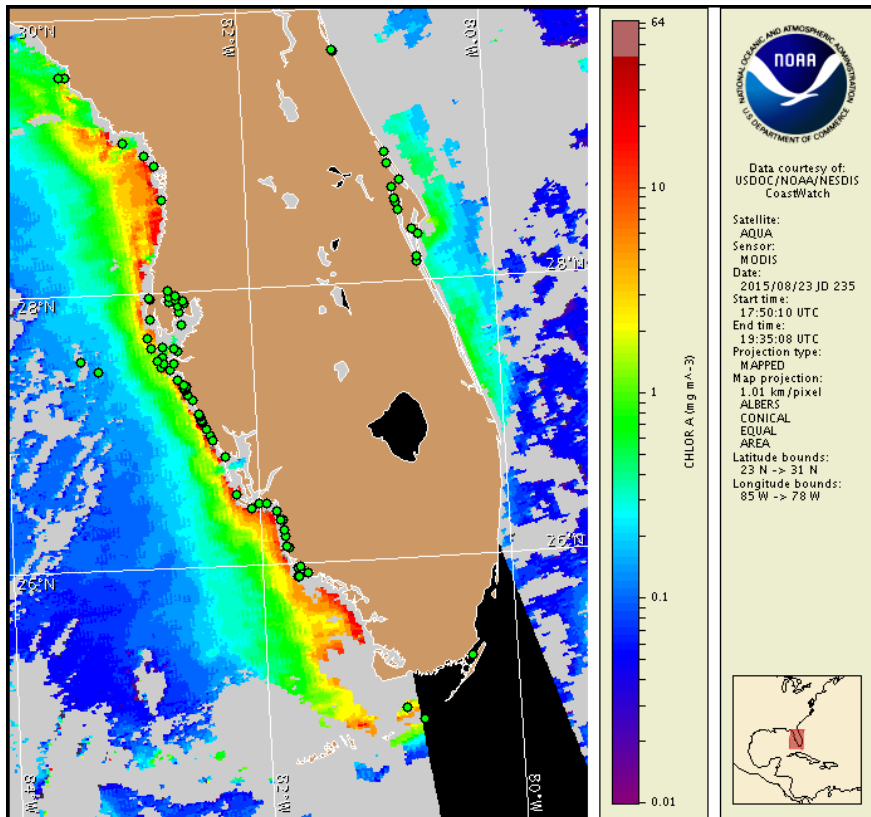
Monday, 24 August 2015

NOAA National Ocean Service

NOAA Satellite and Information Service

NOAA National Weather Service

Last bulletin: Monday, August 17, 2015



Satellite chlorophyll image with possible *K. brevis* HAB areas shown by red polygon(s), when applicable. Points represent cell concentration sampling data from August 14 to 20: red (high), orange (medium), yellow (low b), brown (low a), blue (very low b), purple (very low a), pink (present), and green (not present). Cell count data are provided by Florida Fish and Wildlife Conservation Commission (FWC) Fish and Wildlife Research Institute. For a list of sample providers and a key to the cell concentration categories, please see the HAB-OFS bulletin guide:

http://tidesandcurrents.noaa.gov/hab/habfs_bulletin_guide.pdf

Detailed sample information can be obtained through FWC Fish and Wildlife Research Institute at:

<http://myfwc.com/redtidestatus>

To see previous bulletins and forecasts for other Harmful Algal Bloom Bulletin regions, visit at: <http://tidesandcurrents.noaa.gov/hab/bulletins.html>

Conditions Report

There is currently no indication of *Karenia brevis* (commonly known as Florida red tide) along the coast of southwest Florida, including the Florida Keys. No respiratory irritation is expected alongshore southwest Florida Monday, August 24 through Monday, August 31.

Check http://tidesandcurrents.noaa.gov/hab/beach_conditions.html for recent, local observations.

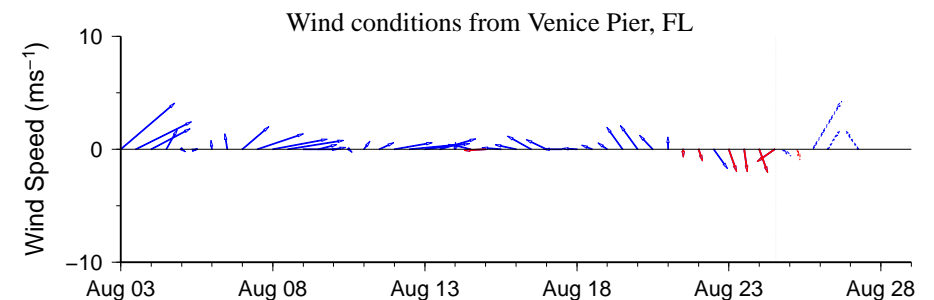
Analysis

Samples collected over the past week along- and offshore the coast of southwest Florida from Pinellas to Monroe counties, including the Florida Keys, all indicate that *Karenia brevis* is not present (FWRI, MML; 8/13-8/20).

Recent MODIS Aqua imagery (8/23; shown left) is partially obscured by clouds along- and offshore southwest Florida in the Pinellas County and Collier County regions, limiting analysis. Elevated to high chlorophyll (3 to $>10 \mu\text{g/L}$) is visible along- and offshore southwest Florida from Sarasota to central Collier County.

Harmful algal bloom formation at the coast of southwest Florida is not expected today through Monday, August 31.

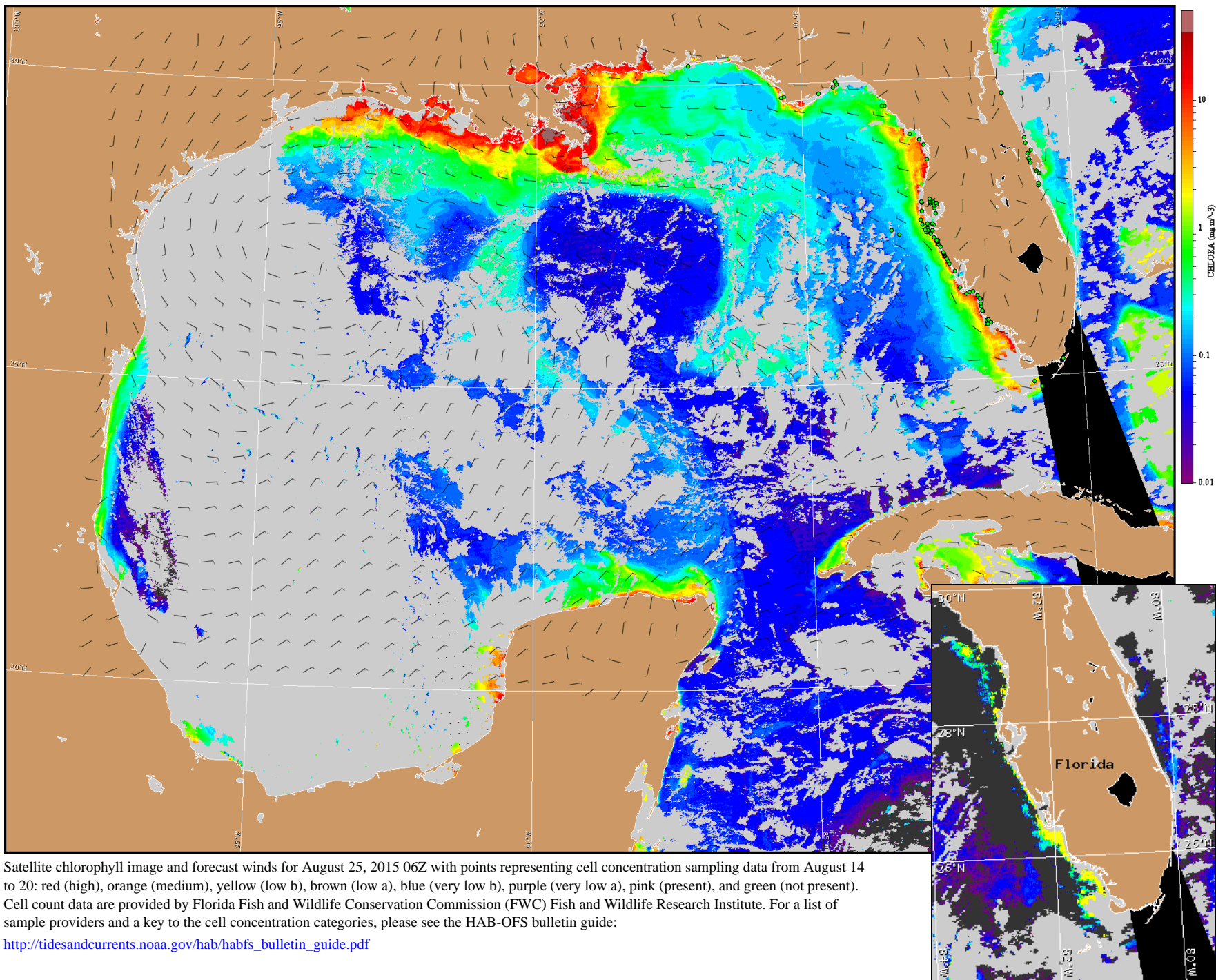
Kavanaugh, Keeney



Wind speed and direction are averaged over 12 hours from buoy measurements. Length of line indicates speed; angle indicates direction. Red indicates that the wind direction favors upwelling near the coast. Values to the left of the dotted vertical line are measured values; values to the right are forecasts. Wind observation and forecast data provided by NOAA's National Weather Service (NWS).

Wind Analysis

Englewood to Tarpon Springs (Venice): Variable winds (5-10kn, 3-5m/s) today. Southwest winds (5-10kn) Tuesday. West winds (10kn, 5m/s) Tuesday night becoming southwest winds (5kn, 3m/s) after midnight through Thursday. West winds (5kn) Thursday night becoming southeast to east winds (5kn) after midnight through Friday.



Satellite chlorophyll image and forecast winds for August 25, 2015 06Z with points representing cell concentration sampling data from August 14 to 20: red (high), orange (medium), yellow (low b), brown (low a), blue (very low b), purple (very low a), pink (present), and green (not present). Cell count data are provided by Florida Fish and Wildlife Conservation Commission (FWC) Fish and Wildlife Research Institute. For a list of sample providers and a key to the cell concentration categories, please see the HAB-OFS bulletin guide:

http://tidesandcurrents.noaa.gov/hab/habfs_bulletin_guide.pdf

Verified and suspected HAB areas shown in red. Other areas of high chlorophyll concentration shown in yellow (see p. 1 analysis for interpretation).