



# Gulf of Mexico Harmful Algal Bloom Bulletin

Region: Southwest Florida

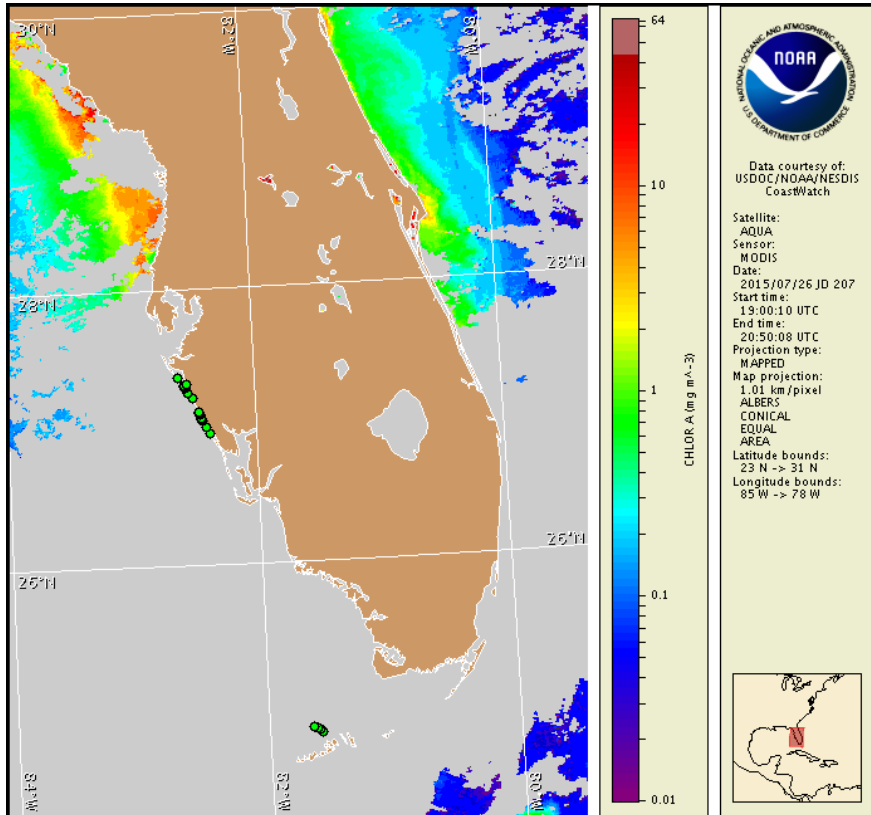
Monday, 27 July 2015

NOAA National Ocean Service

NOAA Satellite and Information Service

NOAA National Weather Service

Last bulletin: Monday, July 20, 2015



Satellite chlorophyll image with possible K. brevis HAB areas shown by red polygon(s), when applicable. Points represent cell concentration sampling data from July 20: red (high), orange (medium), yellow (low b), brown (low a), blue (very low b), purple (very low a), pink (present), and green (not present). Cell count data are provided by Florida Fish and Wildlife Conservation Commission (FWC) Fish and Wildlife Research Institute. For a list of sample providers and a key to the cell concentration categories, please see the HAB-OFS bulletin guide:

[http://tidesandcurrents.noaa.gov/hab/habfs\\_bulletin\\_guide.pdf](http://tidesandcurrents.noaa.gov/hab/habfs_bulletin_guide.pdf)

Detailed sample information can be obtained through FWC Fish and Wildlife Research Institute at:

<http://myfwc.com/redtidestatus>

To see previous bulletins and forecasts for other Harmful Algal Bloom Bulletin regions, visit at: <http://tidesandcurrents.noaa.gov/hab/bulletins.html>

## Conditions Report

*Karenia brevis* (commonly known as Florida red tide) ranges from not present to background concentrations along the coast of southwest Florida, and is not present in the Florida Keys. No respiratory irritation is expected alongshore southwest Florida Monday, July 27 through Monday, August 3.

Check [http://tidesandcurrents.noaa.gov/hab/beach\\_conditions.html](http://tidesandcurrents.noaa.gov/hab/beach_conditions.html) for recent, local observations.

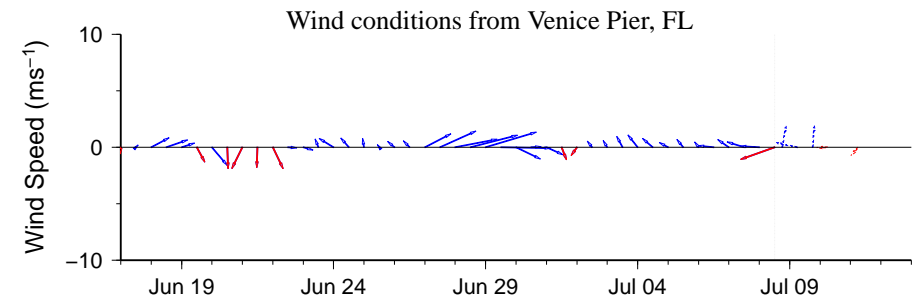
## Analysis

Samples collected over the past week along- and offshore the coast of southwest Florida from Pinellas to Monroe counties including the Florida Keys, all indicate that *Karenia brevis* is not present, with the exception of two background observations sampled in Pinellas County at Gulf Pier on Mullet Key and 7.7 miles offshore of Mullet Key (FWRI, MML, SCHD; 7/17-7/23).

Recent MODIS Aqua imagery (7/26, shown left) has been completely obscured by clouds along- and offshore southwest Florida from Pinellas to Monroe counties over the past several days, preventing analysis.

Harmful algal bloom formation at the coast of southwest Florida is not expected today through Monday, August 3.

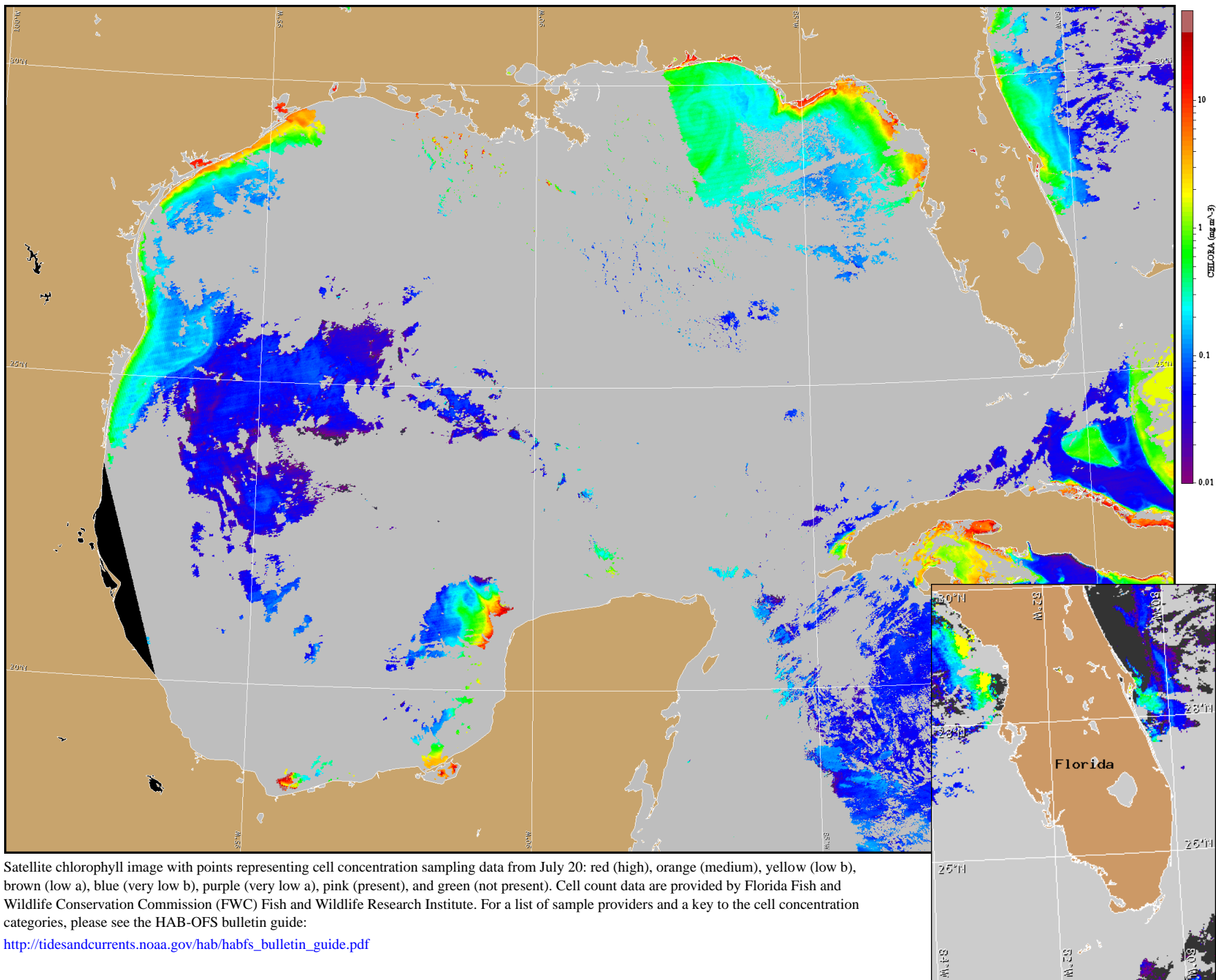
Lalime, Davis



Wind speed and direction are averaged over 12 hours from buoy measurements. Length of line indicates speed; angle indicates direction. Red indicates that the wind direction favors upwelling near the coast. Values to the left of the dotted vertical line are measured values; values to the right are forecasts. Wind observation and forecast data provided by NOAA's National Weather Service (NWS).

## Wind Analysis

**Englewood to Tarpon Springs (Venice):** Southwest winds (10-20kn, 5-10m/s) today and tonight. West winds (5-15kn, 3-8m/s) Tuesday through Wednesday becoming southwest winds (10kn, 5m/s) Wednesday night. South winds (5-10kn, 3-5m/s) Thursday becoming southwest winds (5-20kn, 3-10m/s) Thursday afternoon to Friday afternoon.



Satellite chlorophyll image with points representing cell concentration sampling data from July 20: red (high), orange (medium), yellow (low b), brown (low a), blue (very low b), purple (very low a), pink (present), and green (not present). Cell count data are provided by Florida Fish and Wildlife Conservation Commission (FWC) Fish and Wildlife Research Institute. For a list of sample providers and a key to the cell concentration categories, please see the HAB-OFS bulletin guide:

[http://tidesandcurrents.noaa.gov/hab/habfs\\_bulletin\\_guide.pdf](http://tidesandcurrents.noaa.gov/hab/habfs_bulletin_guide.pdf)

Verified and suspected HAB areas shown in red. Other areas of high chlorophyll concentration shown in yellow (see p. 1 analysis for interpretation).