



Gulf of Mexico Harmful Algal Bloom Bulletin

Region: Southwest Florida

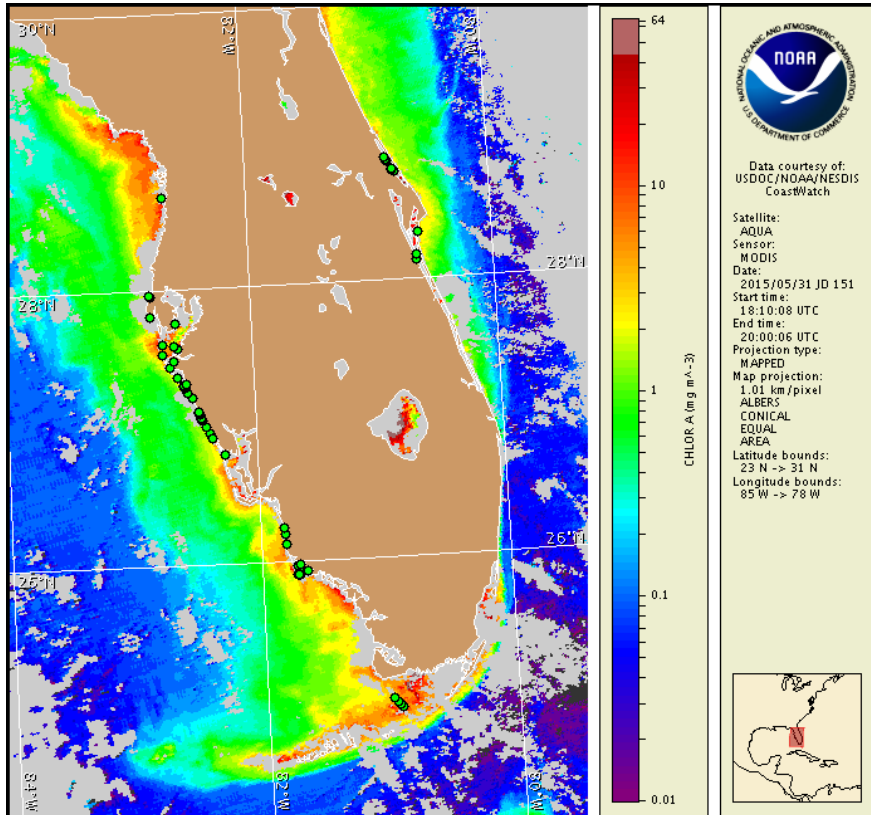
Monday, 01 June 2015

NOAA National Ocean Service

NOAA Satellite and Information Service

NOAA National Weather Service

Last bulletin: Tuesday, May 26, 2015



Satellite chlorophyll image with possible *K. brevis* HAB areas shown by red polygon(s), when applicable. Points represent cell concentration sampling data from May 22 to 27: red (high), orange (medium), yellow (low b), brown (low a), blue (very low b), purple (very low a), pink (present), and green (not present). Cell count data are provided by Florida Fish and Wildlife Conservation Commission (FWC) Fish and Wildlife Research Institute. For a list of sample providers and a key to the cell concentration categories, please see the HAB-OFS bulletin guide:

http://tidesandcurrents.noaa.gov/hab/habfs_bulletin_guide.pdf

Detailed sample information can be obtained through FWC Fish and Wildlife Research Institute at:

<http://myfwc.com/redtidestatus>

To see previous bulletins and forecasts for other Harmful Algal Bloom Bulletin regions, visit at: <http://tidesandcurrents.noaa.gov/hab/bulletins.html>

Conditions Report

There is currently no indication of *Karenia brevis* (commonly known as Florida red tide) along the coast of southwest Florida, including the Florida Keys. No respiratory irritation is expected alongshore southwest Florida Monday, June 1 through Monday, June 8.

Check http://tidesandcurrents.noaa.gov/hab/beach_conditions.html for recent, local observations.

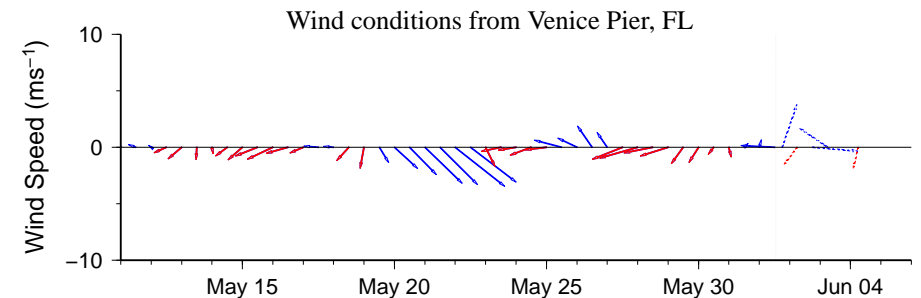
Analysis

Recent samples received from along- and offshore southwest Florida, from Pinellas to Monroe counties, including the Florida Keys, all indicate that *Karenia brevis* is not present (FWRI, MML, CCPCPD; 5/18-5/28).

In recent MODIS Aqua imagery (5/31, shown left) elevated chlorophyll (1-9 $\mu\text{g/L}$) is visible in patches along- and offshore southwest Florida from Pinellas to Collier counties. The elevated chlorophyll is likely associated with blooms of various algal species that continue to be detected alongshore southwest Florida.

Harmful algal bloom formation at the coast of southwest Florida is not expected today through Monday, June 8.

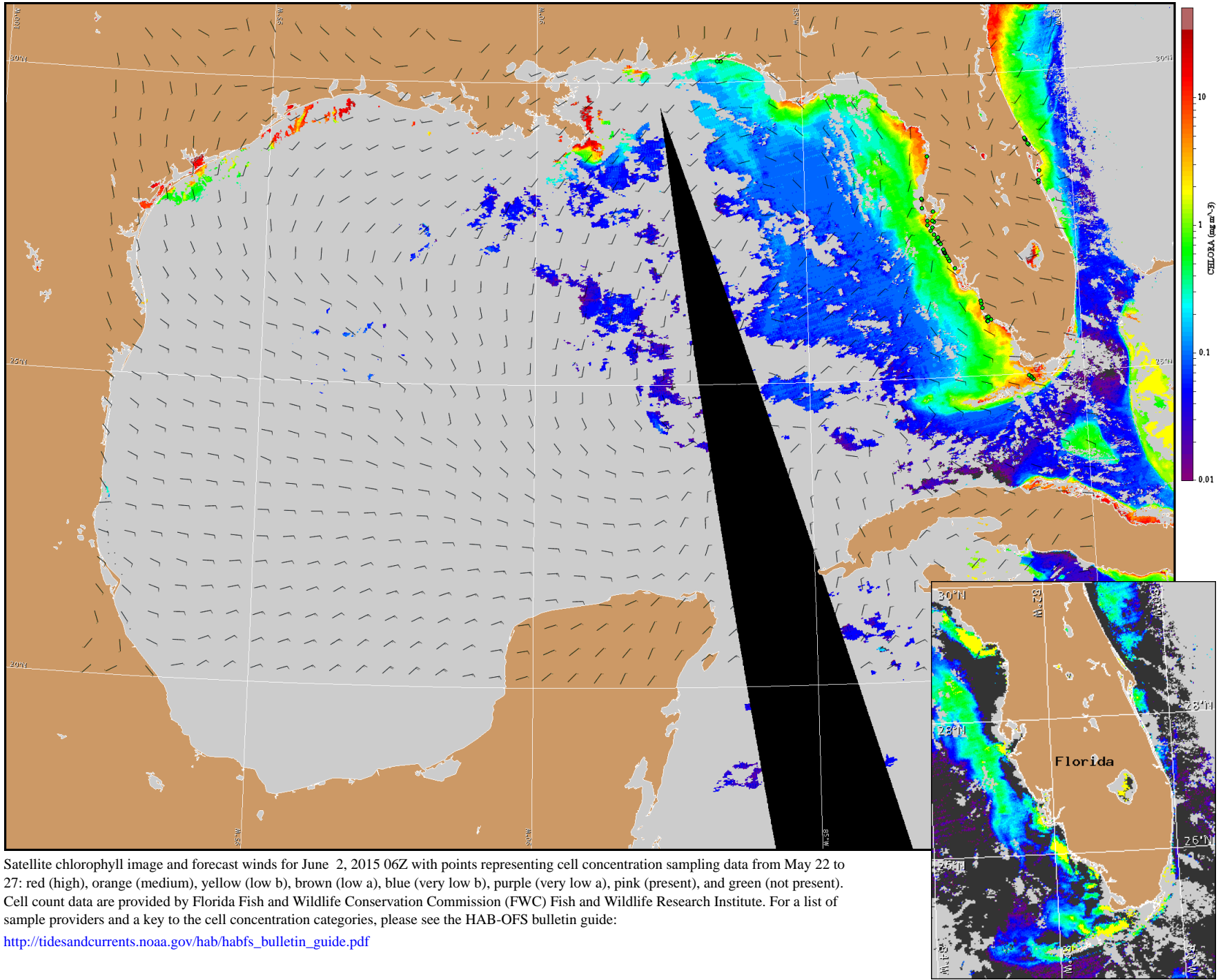
Derner, Lalime



Wind speed and direction are averaged over 12 hours from buoy measurements. Length of line indicates speed; angle indicates direction. Red indicates that the wind direction favors upwelling near the coast. Values to the left of the dotted vertical line are measured values; values to the right are forecasts. Wind observation and forecast data provided by NOAA's National Weather Service (NWS).

Wind Analysis

Englewood to Tarpon Springs (Venice): Southeast winds (10kn, 5m/s) today becoming southwest in the afternoon. West winds (10kn) tonight becoming southeast (5kn, 3m/s) after midnight. Southwest winds (5kn) Tuesday becoming west (10kn) in the afternoon. Southeast winds (10kn) Tuesday night. South winds (10kn) Wednesday becoming southwest (5kn) Wednesday afternoon. West winds (5kn) Wednesday night becoming southeast (5kn) after midnight. Northeast winds (5-10kn) Thursday becoming east (5kn) after midnight. Northeast winds (10kn) Friday.



Satellite chlorophyll image and forecast winds for June 2, 2015 06Z with points representing cell concentration sampling data from May 22 to 27: red (high), orange (medium), yellow (low b), brown (low a), blue (very low b), purple (very low a), pink (present), and green (not present). Cell count data are provided by Florida Fish and Wildlife Conservation Commission (FWC) Fish and Wildlife Research Institute. For a list of sample providers and a key to the cell concentration categories, please see the HAB-OFS bulletin guide:

http://tidesandcurrents.noaa.gov/hab/habfs_bulletin_guide.pdf

Verified and suspected HAB areas shown in red. Other areas of high chlorophyll concentration shown in yellow (see p. 1 analysis for interpretation).