



## Gulf of Mexico Harmful Algal Bloom Bulletin

Region: Southwest Florida

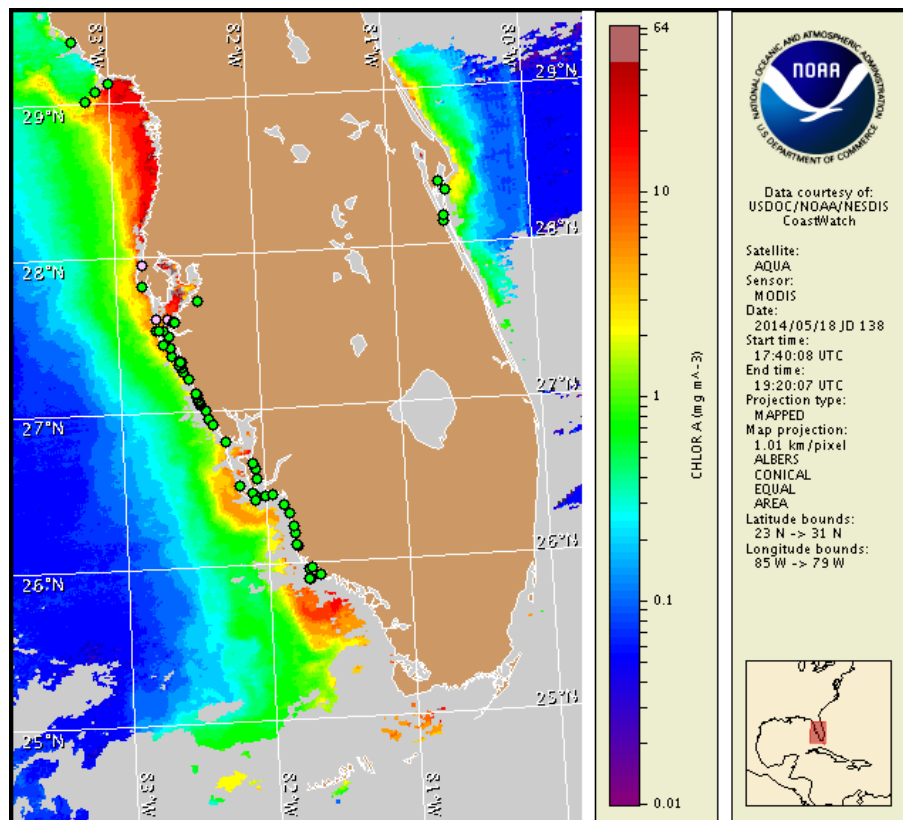
Monday, 19 May 2014

NOAA National Ocean Service

NOAA Satellite and Information Service

NOAA National Weather Service

Last bulletin: Monday, May 12, 2014



Satellite chlorophyll image with possible *K. brevis* HAB areas shown by red polygon(s), when applicable. Points represent cell concentration sampling data from May 9 to 15: red (high), orange (medium), yellow (low b), brown (low a), blue (very low b), purple (very low a), pink (present), and green (not present). Cell count data are provided by Florida Fish and Wildlife Conservation Commission (FWC) Fish and Wildlife Research Institute. For a list of sample providers and a key to the cell concentration categories, please see the HAB-OFS bulletin guide:

[http://tidesandcurrents.noaa.gov/hab/habfs\\_bulletin\\_guide.pdf](http://tidesandcurrents.noaa.gov/hab/habfs_bulletin_guide.pdf)

Detailed sample information can be obtained through FWC Fish and Wildlife Research Institute at:

<http://myfwc.com/redtidestatus>

To see previous bulletins and forecasts for other Harmful Algal Bloom Bulletin regions, visit at: <http://tidesandcurrents.noaa.gov/hab/bulletins.html>

## Conditions Report

*Karenia brevis* (commonly known as Florida red tide) ranges from not present to background concentrations along the coast of southwest Florida, and is not present in the Florida Keys. No respiratory irritation is expected Monday, May 19 through Tuesday, May 27.

Check [http://tidesandcurrents.noaa.gov/hab/beach\\_conditions.html](http://tidesandcurrents.noaa.gov/hab/beach_conditions.html) for recent, local observations.

## Analysis

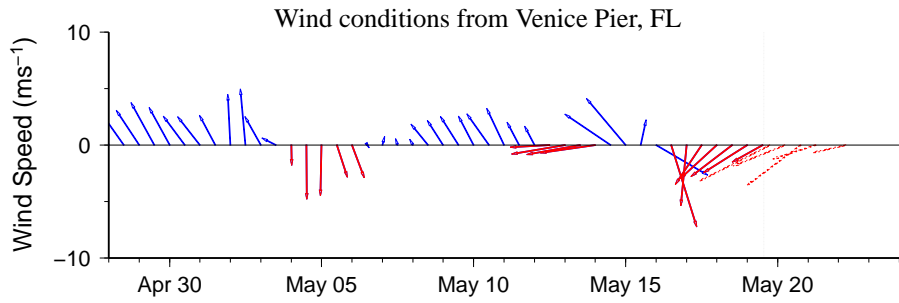
\*\*Due to the upcoming federal holiday, the next bulletin will be issued on Tuesday, May 27.\*\*

Samples collected over the past ten days along the coast of southwest Florida from Pinellas to Collier counties all indicate that *Karenia brevis* is not present, with the exception of background concentrations identified in samples collected alongshore northern Pinellas County at Clearwater Pass and the Gulf pier of Mullet Key, in the bay regions of northern Manatee County from south Skyway Fishing Pier, and in northern Sarasota County at New Pass within Sarasota Bay (FWRI, MML, SCHD, CCPCPD; 5/9-5/15).

Recent MODIS Aqua imagery (5/18, shown left) is partially obscured by clouds alongshore southwest Florida from Pinellas to Monroe counties, limiting analysis. Patches of elevated chlorophyll (2-6  $\mu\text{g/L}$ ) are visible offshore portions of Pinellas, Manatee, Charlotte, Lee, and Collier counties.

Harmful algal bloom formation at the coast of southwest Florida is not expected today through Tuesday, May 27.

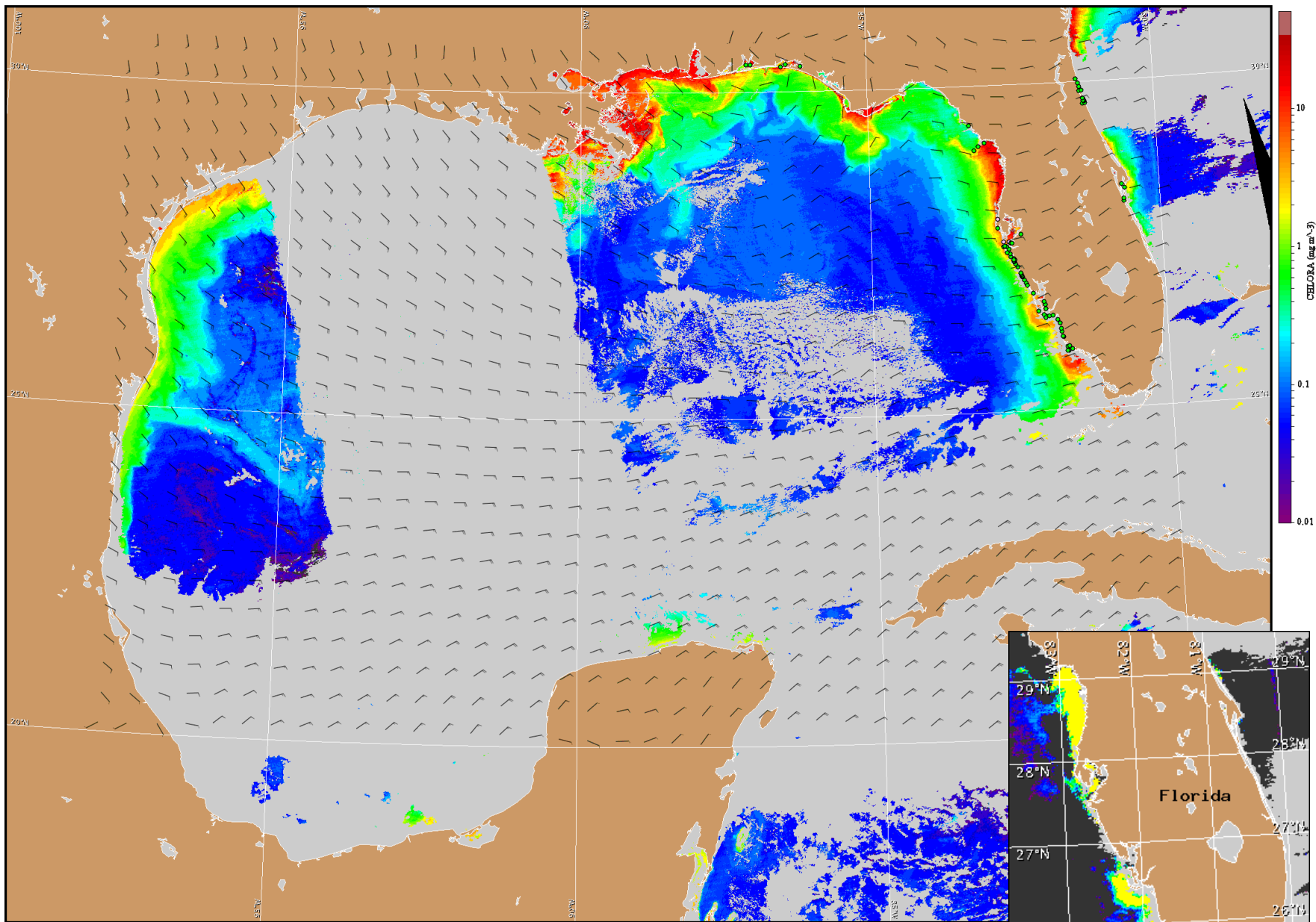
Kavanaugh, Davis



Wind speed and direction are averaged over 12 hours from buoy measurements. Length of line indicates speed; angle indicates direction. Red indicates that the wind direction favors upwelling near the coast. Values to the left of the dotted vertical line are measured values; values to the right are forecasts. Wind observation and forecast data provided by NOAA's National Weather Service (NWS).

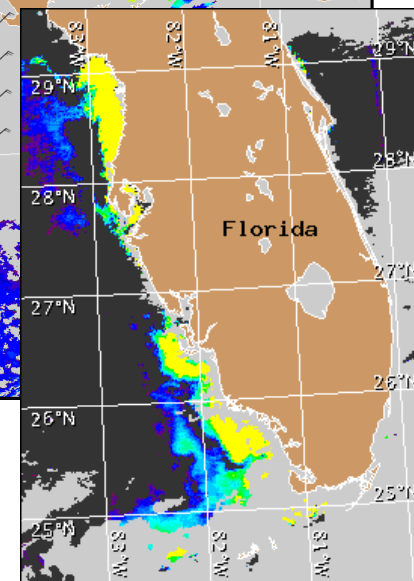
## Wind Analysis

**Southwest Florida:** East winds (5-10kn, 3-5m/s) becoming north winds (10-15kn, 5-8m/s) this afternoon and switching back to east winds (10-15kn) tonight. Northeast to north winds (10-15kn) Tuesday becoming east after midnight. Northeast to north winds (10kn, 5m/s) Wednesday becoming east after midnight. Southeast winds (5 kn, 3m/s) Thursday becoming northwest winds (10kn) Thursday afternoon through Friday.



Satellite chlorophyll image and forecast winds for May 20, 2014 06Z with points representing cell concentration sampling data from May 9 to 15: red (high), orange (medium), yellow (low b), brown (low a), blue (very low b), purple (very low a), pink (present), and green (not present). Cell count data are provided by Florida Fish and Wildlife Conservation Commission (FWC) Fish and Wildlife Research Institute. For a list of sample providers and a key to the cell concentration categories, please see the HAB-OFS bulletin guide:

[http://tidesandcurrents.noaa.gov/hab/habfs\\_bulletin\\_guide.pdf](http://tidesandcurrents.noaa.gov/hab/habfs_bulletin_guide.pdf)



Verified and suspected HAB areas shown in red. Other areas of high chlorophyll concentration shown in yellow (see p. 1 analysis for interpretation).