



# Gulf of Mexico Harmful Algal Bloom Bulletin

Region: Southwest Florida

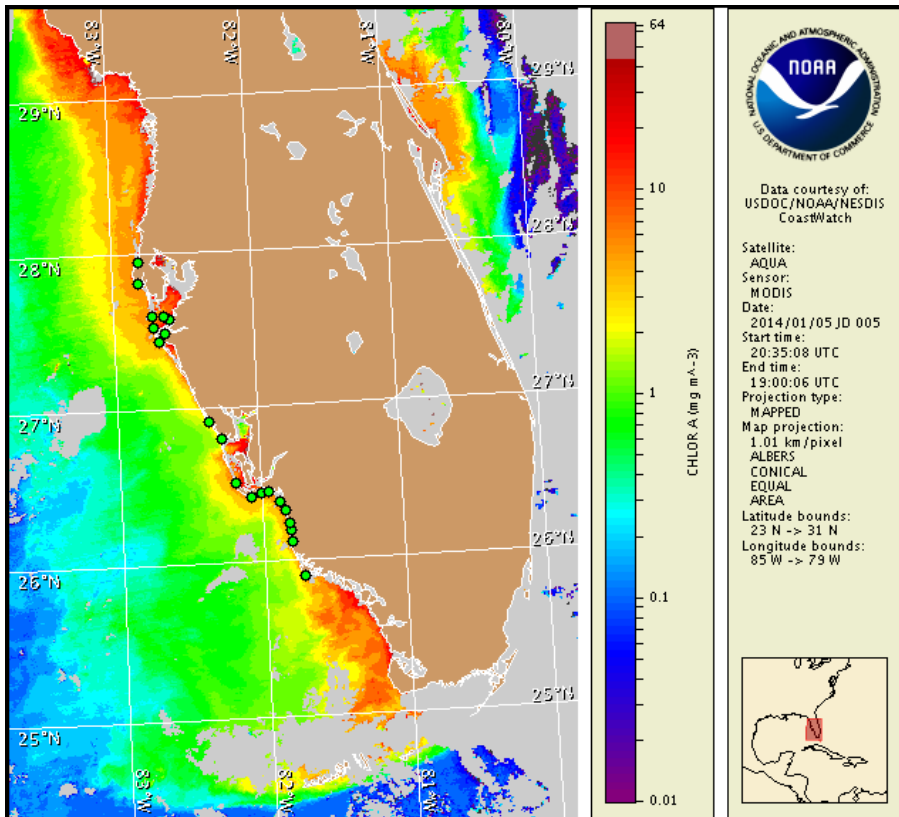
Monday, 06 January 2014

NOAA National Ocean Service

NOAA Satellite and Information Service

NOAA National Weather Service

Last bulletin: Monday, December 30, 2013



Satellite chlorophyll image with possible *K. brevis* HAB areas shown by red polygon(s), when applicable. Points represent cell concentration sampling data from December 30 to 31: red (high), orange (medium), yellow (low b), brown (low a), blue (very low b), purple (very low a), pink (present), and green (not present). Cell count data are provided by Florida Fish and Wildlife Conservation Commission (FWC) Fish and Wildlife Research Institute. For a list of sample providers and a key to the cell concentration categories, please see the HAB-OFS bulletin guide:

[http://tidesandcurrents.noaa.gov/hab/habfs\\_bulletin\\_guide.pdf](http://tidesandcurrents.noaa.gov/hab/habfs_bulletin_guide.pdf)

Detailed sample information can be obtained through FWC Fish and Wildlife Research Institute at:

<http://myfwc.com/redtidestatus>

To see previous bulletins and forecasts for other Harmful Algal Bloom Bulletin regions, visit at: <http://tidesandcurrents.noaa.gov/hab/bulletins.html>

## Conditions Report

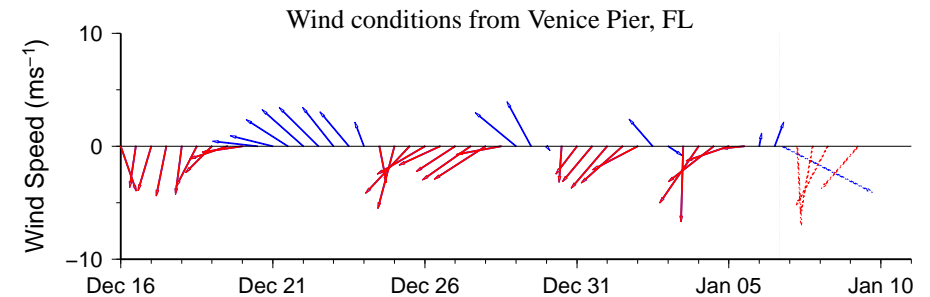
There is currently no indication of *Karenia brevis* (commonly known as Florida red tide) along the coast of southwest Florida, including the Florida Keys. No respiratory irritation is expected Monday, January 6 through Monday, January 13. Check [http://tidesandcurrents.noaa.gov/hab/beach\\_conditions.html](http://tidesandcurrents.noaa.gov/hab/beach_conditions.html) for recent, local observations.

## Analysis

The most recent samples taken from alongshore northern Pinellas to central Collier County all indicate that *Karenia brevis* is not present (FWRI, CCPCPD; 12/30-31). MODIS Aqua imagery (1/5; shown left) indicates patches of elevated levels of chlorophyll (1.5-6  $\mu\text{g/L}$ ) alongshore southwest Florida from Pinellas to northern Monroe counties.

Harmful algal bloom formation at the coast of southwest Florida is not expected today through Monday, January 13.

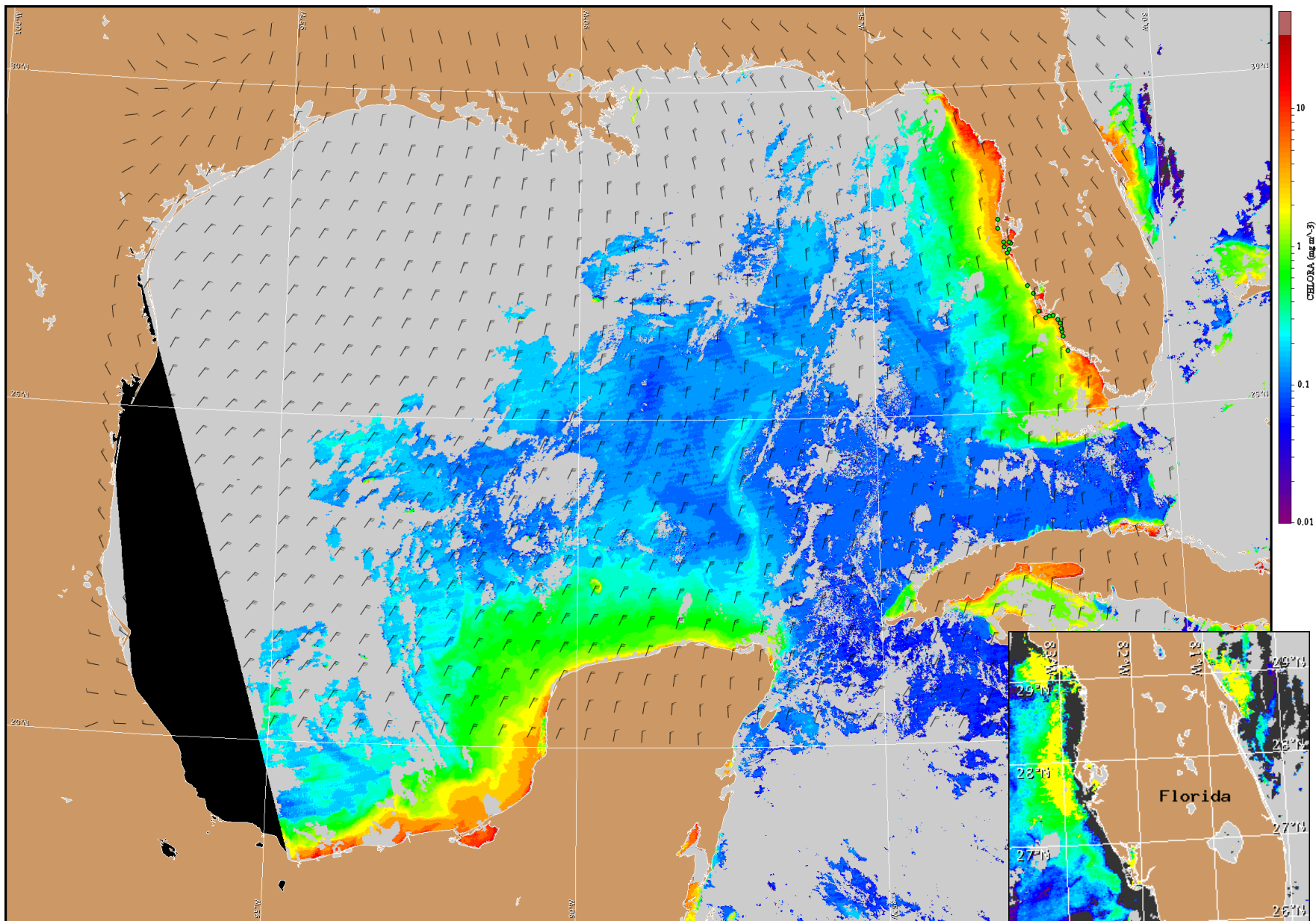
Urizar, Kavanaugh



Wind speed and direction are averaged over 12 hours from buoy measurements. Length of line indicates speed; angle indicates direction. Red indicates that the wind direction favors upwelling near the coast. Values to the left of the dotted vertical line are measured values; values to the right are forecasts. Wind observation and forecast data provided by NOAA's National Weather Service (NWS).

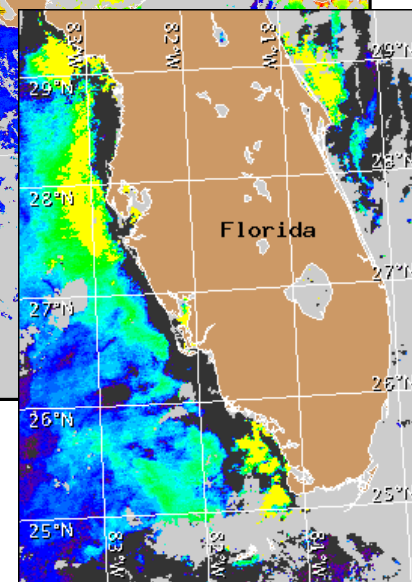
## Wind Analysis

**Southwest Florida:** Northwesterly winds (20-25 kn, 10-13 m/s) today becoming north by the afternoon. Northerly winds (20-25 kn) tonight through Tuesday. Northeasterly winds (10-15 kn, 5-8 m/s) Tuesday night through Thursday. Easterly winds (10-15 kn) Thursday night and Friday.



Satellite chlorophyll image and forecast winds for January 7, 2014 06Z with points representing cell concentration sampling data from December 30 to 31: red (high), orange (medium), yellow (low b), brown (low a), blue (very low b), purple (very low a), pink (present), and green (not present). Cell count data are provided by Florida Fish and Wildlife Conservation Commission (FWC) Fish and Wildlife Research Institute. For a list of sample providers and a key to the cell concentration categories, please see the HAB-OFS bulletin guide:

[http://tidesandcurrents.noaa.gov/hab/habfbs\\_bulletin\\_guide.pdf](http://tidesandcurrents.noaa.gov/hab/habfbs_bulletin_guide.pdf)



Verified and suspected HAB areas shown in red. Other areas of high chlorophyll concentration shown in yellow (see p. 1 analysis for interpretation).