



# Gulf of Mexico Harmful Algal Bloom Bulletin

Region: Southwest Florida

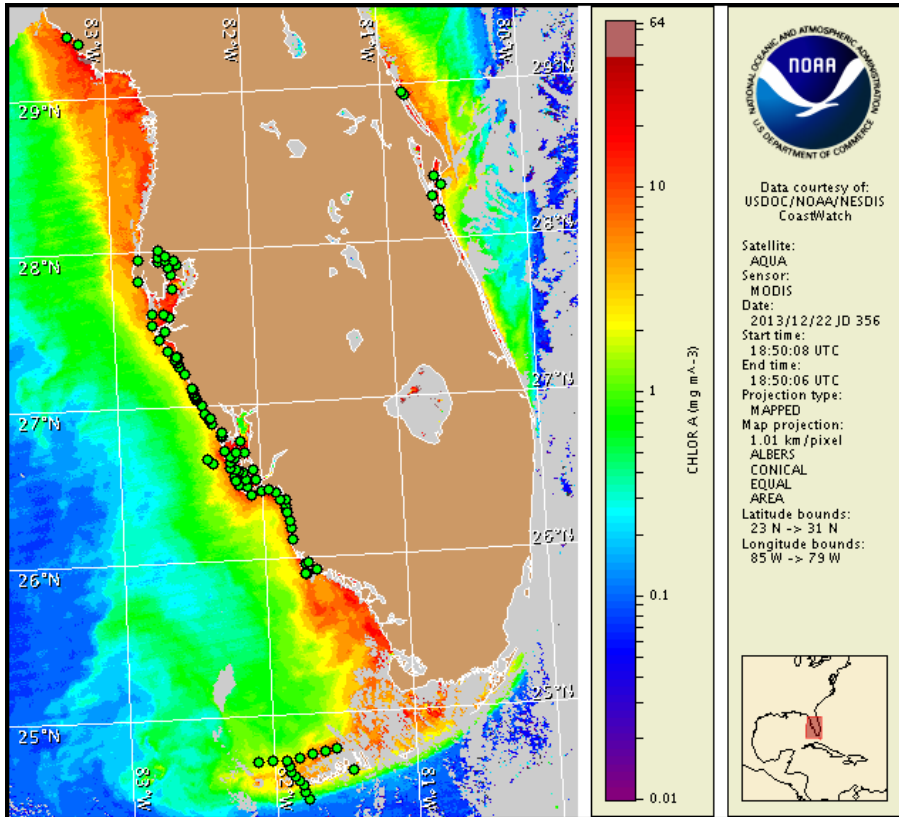
Monday, 23 December 2013

NOAA National Ocean Service

NOAA Satellite and Information Service

NOAA National Weather Service

Last bulletin: Monday, December 16, 2013



Satellite chlorophyll image with possible *K. brevis* HAB areas shown by red polygon(s), when applicable. Points represent cell concentration sampling data from December 13 to 20: red (high), orange (medium), yellow (low b), brown (low a), blue (very low b), purple (very low a), pink (present), and green (not present). Cell count data are provided by Florida Fish and Wildlife Conservation Commission (FWC) Fish and Wildlife Research Institute. For a list of sample providers and a key to the cell concentration categories, please see the HAB-OFS bulletin guide:

[http://tidesandcurrents.noaa.gov/hab/habfs\\_bulletin\\_guide.pdf](http://tidesandcurrents.noaa.gov/hab/habfs_bulletin_guide.pdf)

Detailed sample information can be obtained through FWC Fish and Wildlife Research Institute at:

<http://myfwc.com/redtidestatus>

To see previous bulletins and forecasts for other Harmful Algal Bloom Bulletin regions, visit at: <http://tidesandcurrents.noaa.gov/hab/bulletins.html>

## Conditions Report

There is currently no indication of *Karenia brevis* (commonly known as Florida red tide) along the coast of southwest Florida, including the Florida Keys. No respiratory irritation is expected Monday, December 23 through Monday, December 30. Check [http://tidesandcurrents.noaa.gov/hab/beach\\_conditions.html](http://tidesandcurrents.noaa.gov/hab/beach_conditions.html) for recent, local observations.

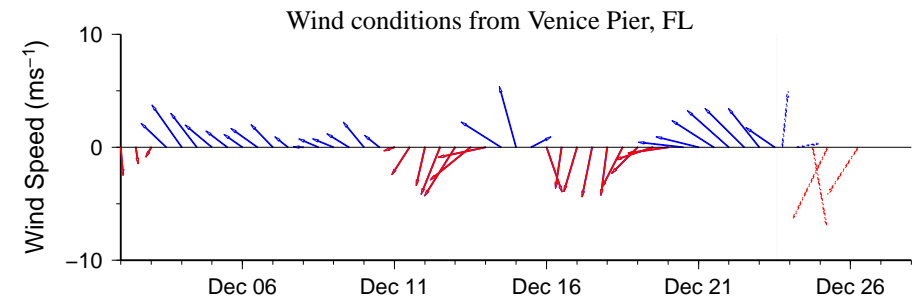
## Analysis

Recent samples collected over the past ten days along- and offshore southwest Florida indicate that *Karenia brevis* is not present from Pinellas to Monroe counties, including the Florida Keys (FWRI, MML, SCHD, CCPCPD; 12/14-12/19).

In MODIS Aqua imagery from 12/22 (shown left), patches of elevated to high chlorophyll (2-13  $\mu\text{g/L}$ ) are visible along- and offshore Lee and Collier counties. The feature of anomalously high chlorophyll noted in the previous bulletin remains south of Marco Island and west of Pavilion Key and will continue to be monitored, but samples collected along- and offshore Pavilion Key on 12/11 indicated that *K. brevis* was not present (MML, FWRI).

Harmful algal bloom formation at the coast of southwest Florida is not expected today through December 30.

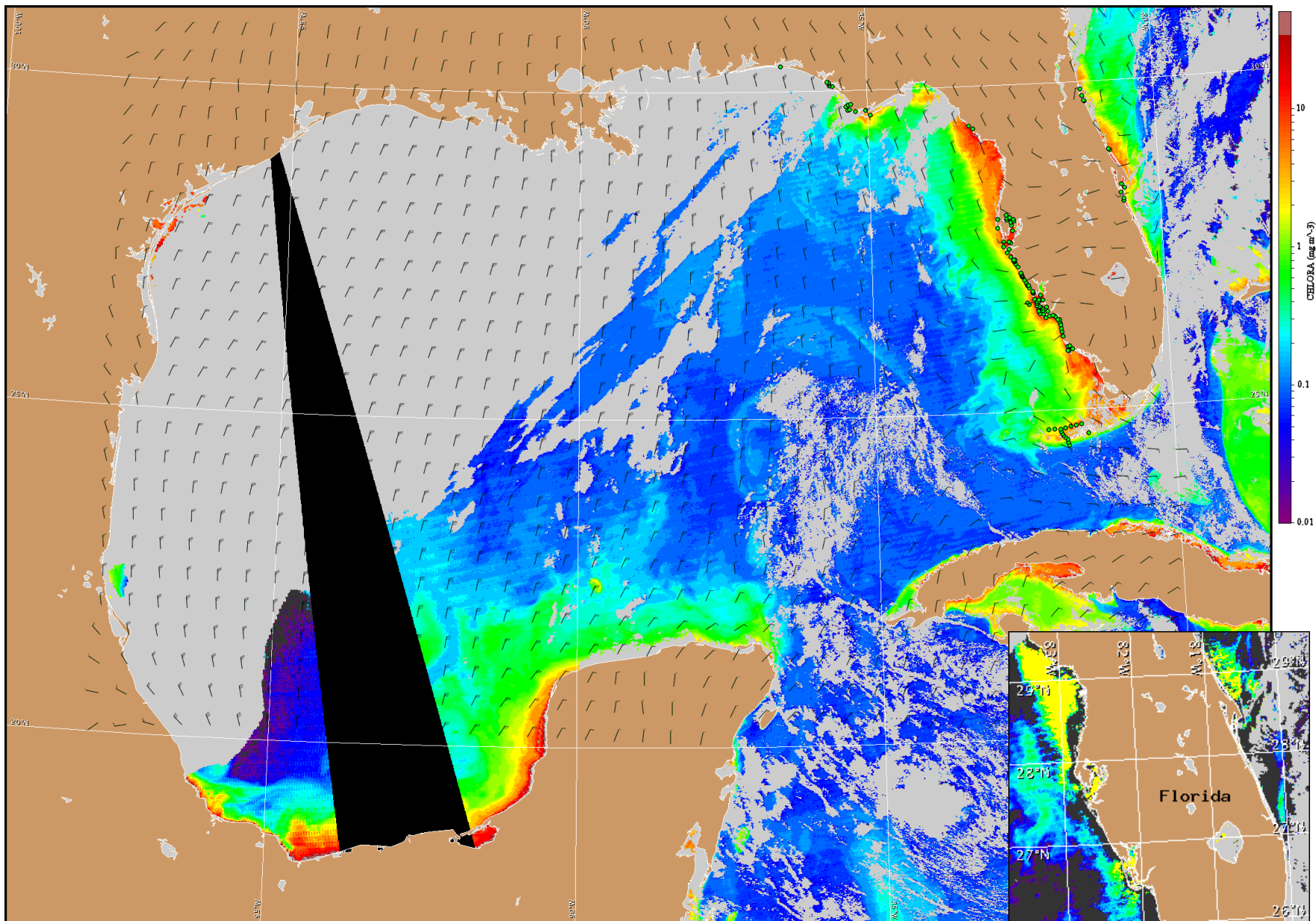
## Kavanaugh, Davis



Wind speed and direction are averaged over 12 hours from buoy measurements. Length of line indicates speed; angle indicates direction. Red indicates that the wind direction favors upwelling near the coast. Values to the left of the dotted vertical line are measured values; values to the right are forecasts. Wind observation and forecast data provided by NOAA's National Weather Service (NWS).

## Wind Analysis

**Southwest Florida:** Southeast to south winds (10kn, 5m/s) today. Southwest winds (5-10kn, 3-5m/s) tonight becoming northwest winds (20kn, 10m/s) after midnight. North to northeast winds (10-20kn, 5-10m/s) Tuesday through Friday.



Satellite chlorophyll image and forecast winds for December 24, 2013 06Z with points representing cell concentration sampling data from December 13 to 20: red (high), orange (medium), yellow (low b), brown (low a), blue (very low b), purple (very low a), pink (present), and green (not present). Cell count data are provided by Florida Fish and Wildlife Conservation Commission (FWC) Fish and Wildlife Research Institute. For a list of sample providers and a key to the cell concentration categories, please see the HAB-OFS bulletin guide:

[http://tidesandcurrents.noaa.gov/hab/habfs\\_bulletin\\_guide.pdf](http://tidesandcurrents.noaa.gov/hab/habfs_bulletin_guide.pdf)

Verified and suspected HAB areas shown in red. Other areas of high chlorophyll concentration shown in yellow (see p. 1 analysis for interpretation).