



Gulf of Mexico Harmful Algal Bloom Bulletin

Region: Southwest Florida

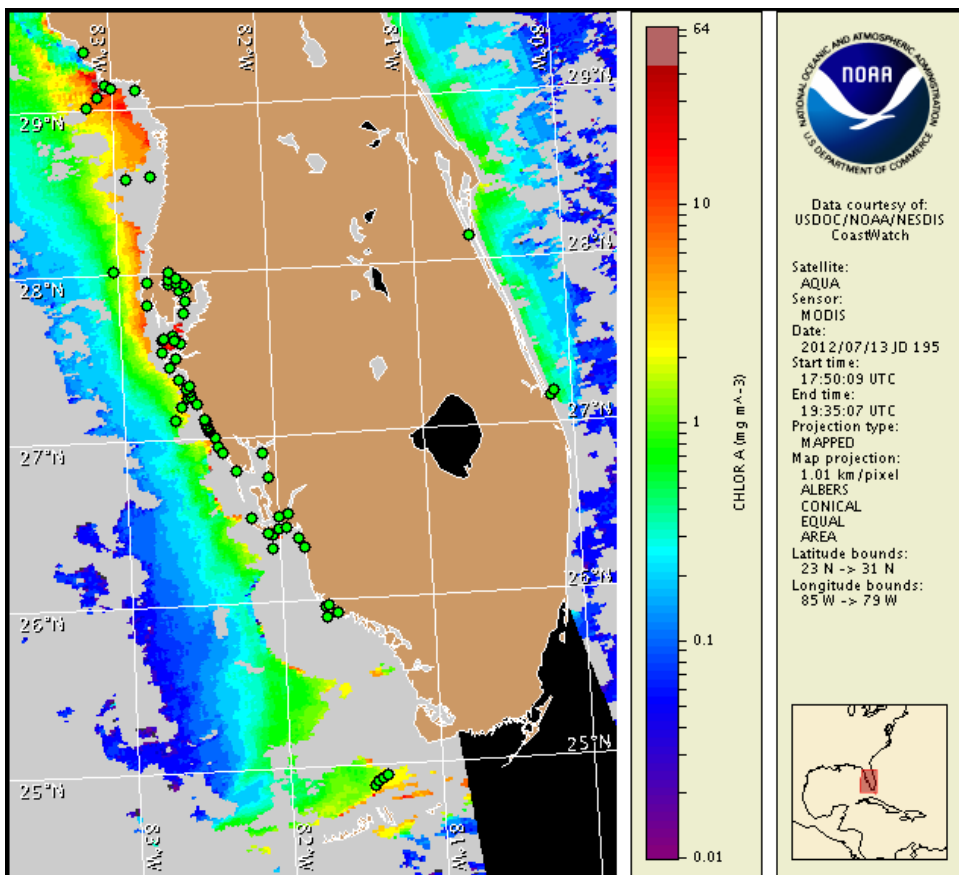
Monday, 16 July 2012

NOAA Ocean Service

NOAA Satellite and Information Service

NOAA National Weather Service

Last bulletin: Monday, July 9, 2012



Satellite chlorophyll image with possible HAB areas shown by red polygon(s). Cell concentration sampling data from July 6 to 12 shown as red (high), orange (medium), yellow (low b), brown (low a), blue (very low b), purple (very low a), pink (present), and green (not present). For a list of cell count data providers and a key to the cell concentration categories, please see the HAB-OFS bulletin guide:

http://tidesandcurrents.noaa.gov/hab/habofs_bulletin_guide.pdf

Detailed sample information can be obtained through the Florida FWC Fish and Wildlife Research Institute at:

<http://myfwc.com/research/redtide/events/status/statewide/>

To see previous bulletins and forecasts for other Harmful Algal Bloom Bulletin regions, visit at: <http://tidesandcurrents.noaa.gov/hab/bulletins.html>

Conditions Report

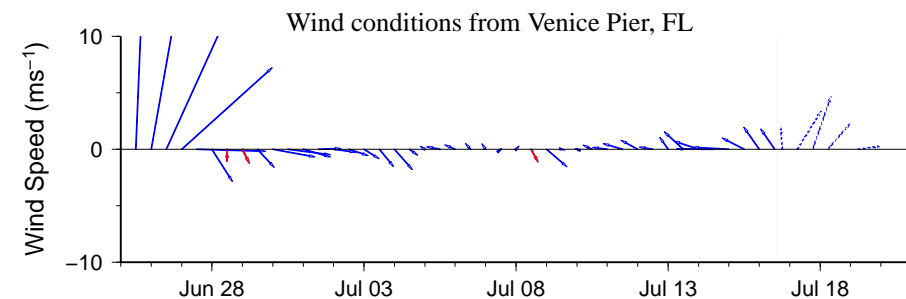
There is currently no indication of a harmful algal bloom in southwest Florida, including the Florida Keys. No impacts are expected alongshore southwest Florida today through Sunday, July 22.

Analysis

There is currently no indication of a harmful algal bloom in southwest Florida, including the Florida Keys. Two samples collected alongshore Sarasota County on 7/10 identified background *K. brevis* concentrations (MML). No additional *K. brevis* was identified in samples collected alongshore Pinellas, Manatee, Sarasota, Charlotte, Lee or Collier counties, offshore Pinellas, Sarasota, or Lee counties, or in the Florida Keys (7/7-12; CCPCPD, FWRI, MML, SCHD). Recent MODIS imagery (7/13; shown left) is completely obscured by clouds, limiting analysis along the coast of southwest Florida.

Harmful algal bloom formation alongshore southwest Florida, including the Florida Keys, is not expected today through Sunday, July 22.

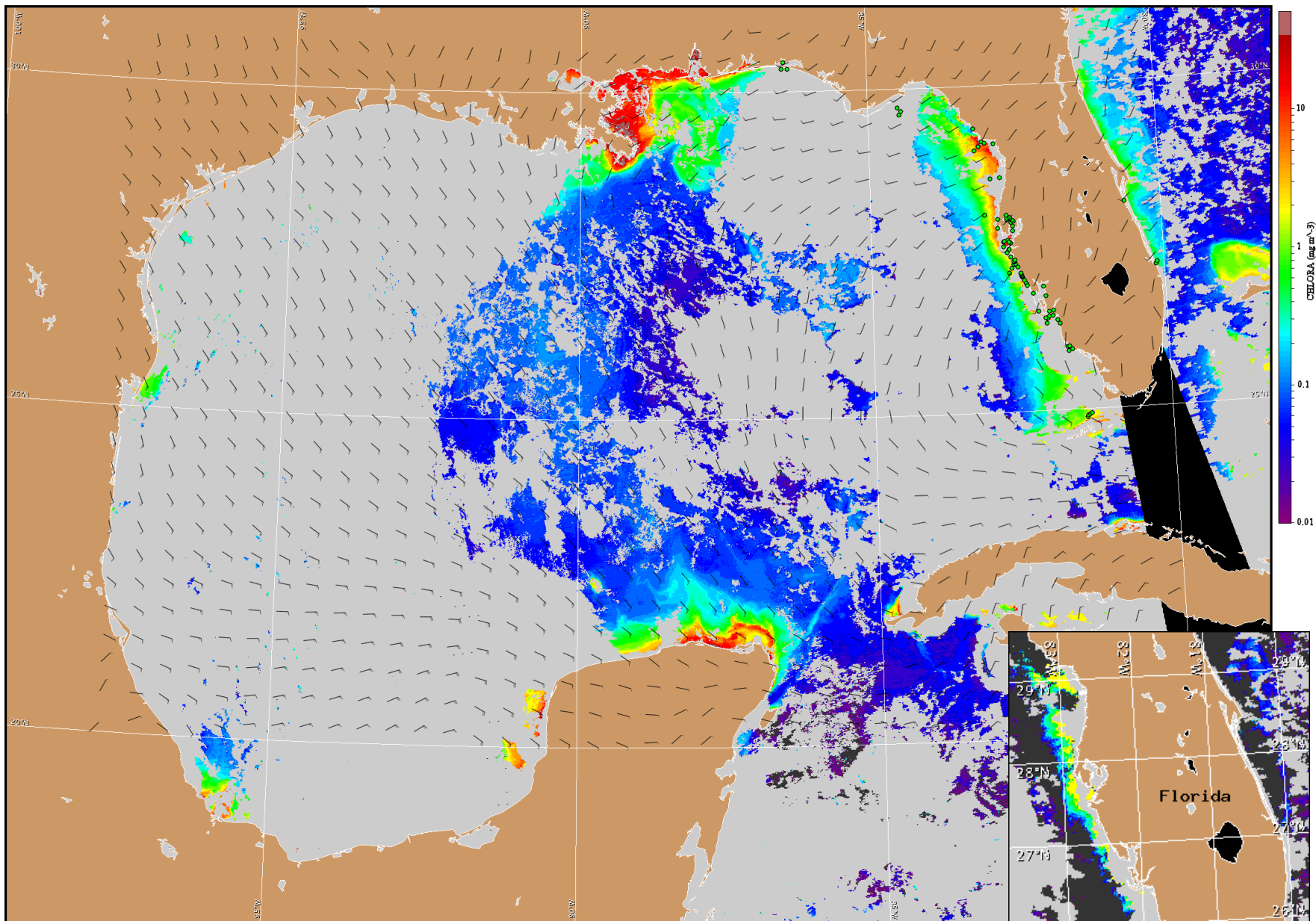
-Derner, Burrows



Wind speed and direction are averaged over 12 hours from buoy measurements. Length of line indicates speed; angle indicates direction. Red indicates that the wind direction favors upwelling near the coast. Values to the left of the dotted vertical line are measured values; values to the right are forecasts. Wind observation and forecast data provided by NOAA's National Weather Service (NWS).

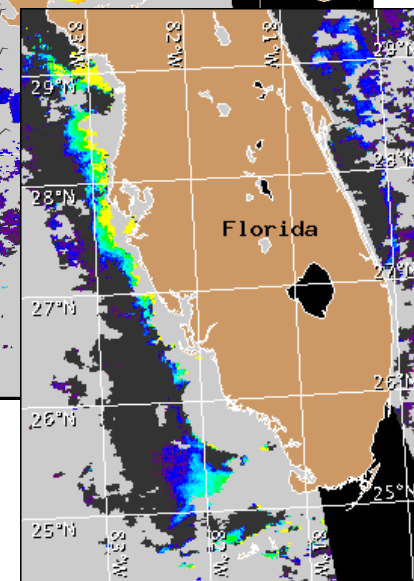
Wind Analysis

Southwest Florida: South winds (5-10kn, 3-5m/s) today becoming southwest (5-10kn) this afternoon through Tuesday. South winds (5kn, 3m/s) Tuesday night through Wednesday becoming southwest (10kn, 5m/s) Wednesday afternoon. South winds (5-10kn) Wednesday night. Southeast winds (5kn) Thursday becoming southwest (5-10kn) Thursday afternoon. Northeast to northwest winds (5-10kn) Thursday night. Variable winds (10kn) Friday.



Satellite chlorophyll image and forecast winds for July 17, 2012 06Z with cell concentration sampling data from July 6 to 12 shown as red (high), orange (medium), yellow (low b), brown (low a), blue(very low b), purple (very low a), pink (present), and green (not present). For a list of cell count data providers and a key to the cell concentration categories, please see the HAB-OFS bulletin guide:

http://tidesandcurrents.noaa.gov/hab/habfs_bulletin_guide.pdf



Verified and suspected HAB areas shown in red. Other areas of high chlorophyll concentration shown in yellow (see p. 1 analysis for interpretation).