



Gulf of Mexico Harmful Algal Bloom Bulletin

Region: Southwest Florida

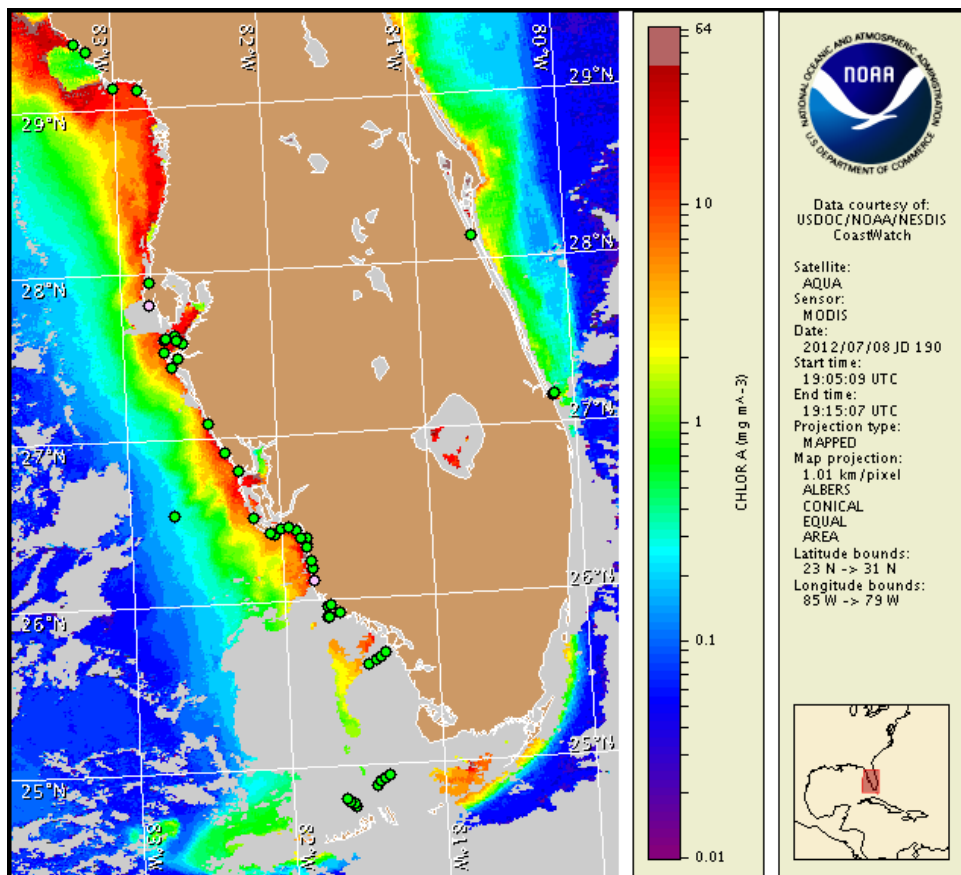
Monday, 09 July 2012

NOAA Ocean Service

NOAA Satellite and Information Service

NOAA National Weather Service

Last bulletin: Monday, July 2, 2012



Satellite chlorophyll image with possible HAB areas shown by red polygon(s). Cell concentration sampling data from June 29 to July 6 shown as red (high), orange (medium), yellow (low b), brown (low a), blue (very low b), purple (very low a), pink (present), and green (not present). For a list of cell count data providers and a key to the cell concentration categories, please see the HAB-OFS bulletin guide:

http://tidesandcurrents.noaa.gov/hab/habfs_bulletin_guide.pdf

Detailed sample information can be obtained through the Florida FWC Fish and Wildlife Research Institute at:

<http://myfwc.com/research/redtide/events/status/statewide/>

To see previous bulletins and forecasts for other Harmful Algal Bloom Bulletin regions, visit at: <http://tidesandcurrents.noaa.gov/hab/bulletins.html>

Conditions Report

There is currently no indication of a harmful algal bloom in southwest Florida, including the Florida Keys. No impacts are expected alongshore southwest Florida today through Sunday, July 15.

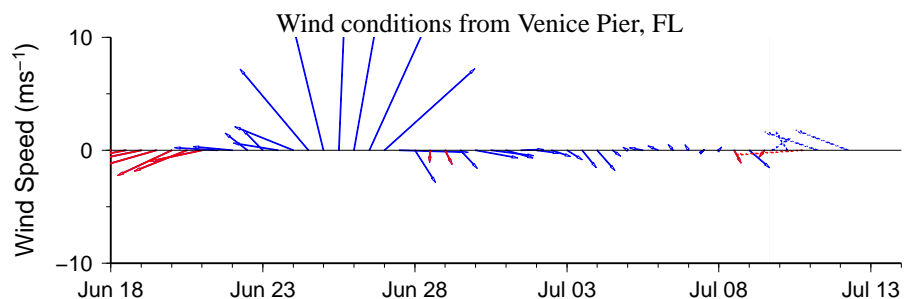
Analysis

There is currently no indication of a harmful algal bloom in southwest Florida, including the Florida Keys. Background concentrations of *Karenia brevis* were identified in Pinellas, Sarasota and Collier Counties (7/2-3; FWRI, CCPCPD, MML). All other samples collected alongshore and offshore from Pinellas to Monroe counties, including the Florida Keys, indicate that *K. brevis* is not present (6/28-7/6; CCPCPD, FWRI, MML, SCHD).

Recent MODIS imagery continues to indicate there is a 10-28 km wide band of generally elevated to high chlorophyll (1 to >10 $\mu\text{g/L}$) alongshore from Pinellas to Monroe counties, with small patches of very high chlorophyll (>20 $\mu\text{g/L}$). Elevated chlorophyll along the coast is likely the result of non-toxic algal blooms that have been reported in several counties alongshore southwest Florida (6/28-7/3; FWRI).

Harmful algal bloom formation alongshore southwest Florida, including the Florida Keys, is not expected today through Sunday, July 15.

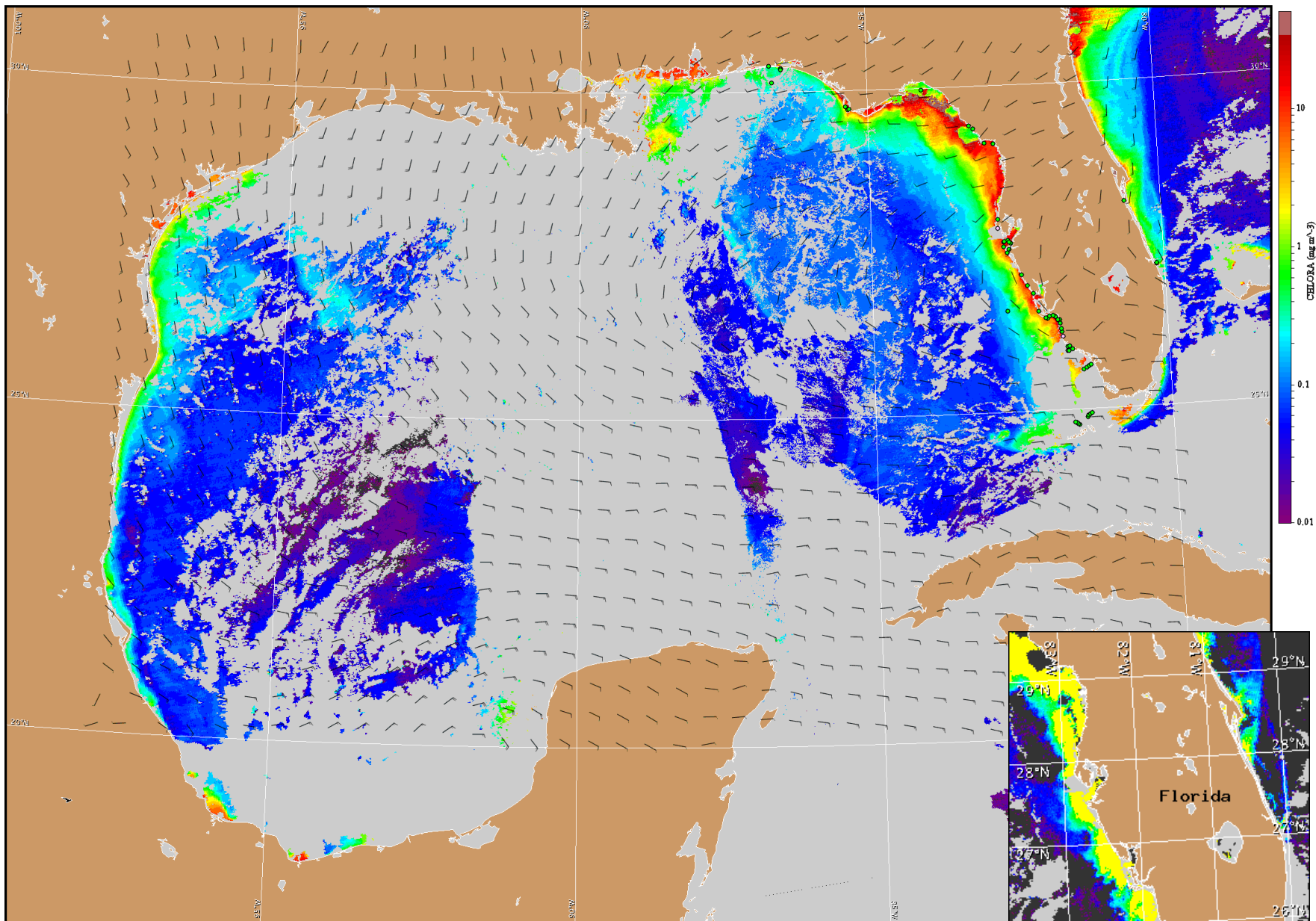
Fenstermacher, Derner, Davis



Wind speed and direction are averaged over 12 hours from buoy measurements. Length of line indicates speed; angle indicates direction. Red indicates that the wind direction favors upwelling near the coast. Values to the left of the dotted vertical line are measured values; values to the right are forecasts. Wind observation and forecast data provided by NOAA's National Weather Service (NWS).

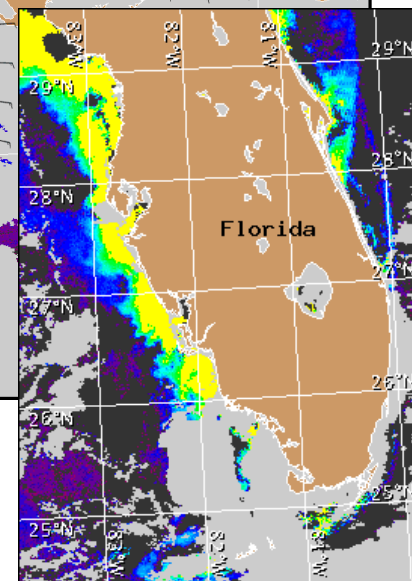
Wind Analysis

SWFL: Variable winds today (5-10 kn; 3-5 m/s) and southeasterly to westerly winds Tuesday and Wednesday (10 kn). Southwesterly to southeasterly winds on Thursday and Friday (5-10 kn).



Satellite chlorophyll image and forecast winds for July 10, 2012 06Z with cell concentration sampling data from June 29 to July 6 shown as red (high), orange (medium), yellow (low b), brown (low a), blue(very low b), purple (very low a), pink (present), and green (not present). For a list of cell count data providers and a key to the cell concentration categories, please see the HAB-OFS bulletin guide:

http://tidesandcurrents.noaa.gov/hab/habfs_bulletin_guide.pdf



Verified and suspected HAB areas shown in red. Other areas of high chlorophyll concentration shown in yellow (see p. 1 analysis for interpretation).