



Gulf of Mexico Harmful Algal Bloom Bulletin

Region: Southwest Florida

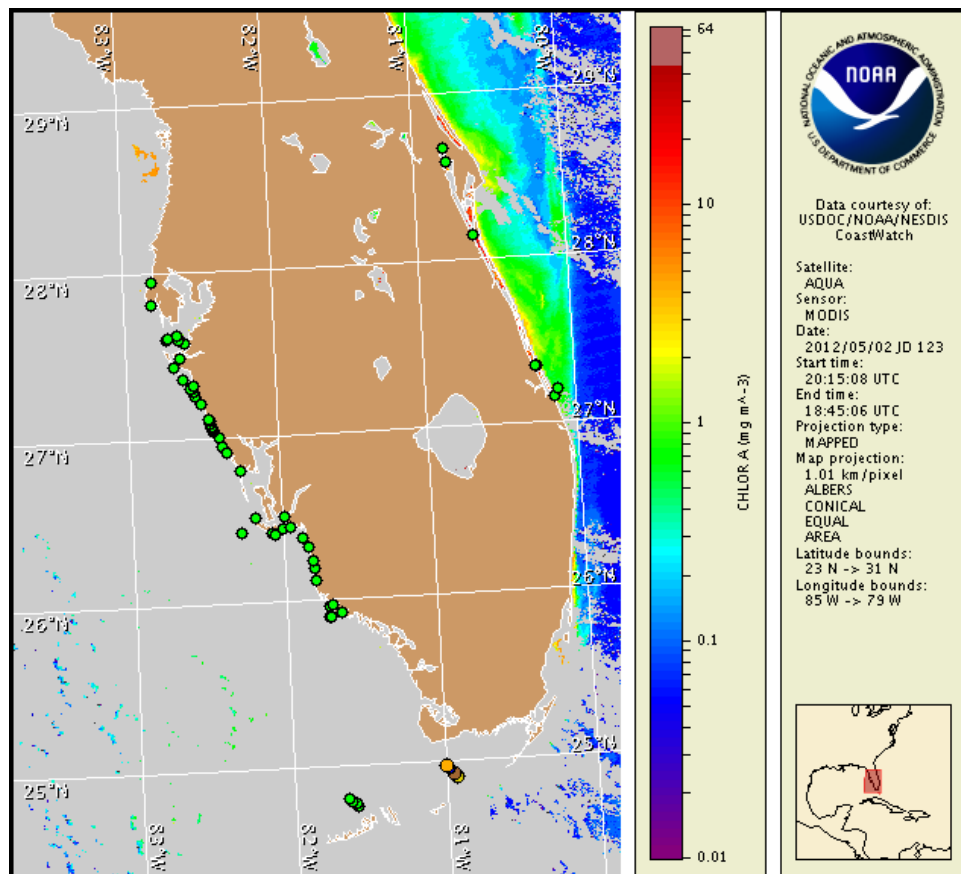
Thursday, 03 May 2012

NOAA Ocean Service

NOAA Satellite and Information Service

NOAA National Weather Service

Last bulletin: Monday, April 30, 2012



Satellite chlorophyll image with possible HAB areas shown by red polygon(s). Cell concentration sampling data from April 23 to May 1 shown as red (high), orange (medium), yellow (low b), brown (low a), blue (very low b), purple (very low a), pink (present), and green (not present). For a list of cell count data providers and a key to the cell concentration categories, please see the HAB-OFS bulletin guide:

http://tidesandcurrents.noaa.gov/hab/habfs_bulletin_guide.pdf

Detailed sample information can be obtained through the Florida FWC Fish and Wildlife Research Institute at:

<http://myfwc.com/research/redtide/events/status/statewide/>

To see previous bulletins and forecasts for other Harmful Algal Bloom Bulletin regions, visit at: <http://tidesandcurrents.noaa.gov/hab/bulletins.html>

Conditions Report

A patchy harmful algal bloom may remain offshore of the gulfside region of the Lower to Middle Florida Keys. Patchy very low impacts are possible today through Sunday. No additional impacts are expected alongshore southwest Florida today through Sunday, May 6.

Analysis

Southwest Florida: Recent samples indicate that *Karenia brevis* is not present in Pinellas, Sarasota, Charlotte, Lee and Collier counties (4/28-5/2; CCPCPD, FWRI, SCHD). MODIS imagery continues to be obscured by clouds along the coast of southwest Florida, limiting analysis. Forecasted winds are variable today through Sunday. Bloom formation is unlikely today through Sunday.

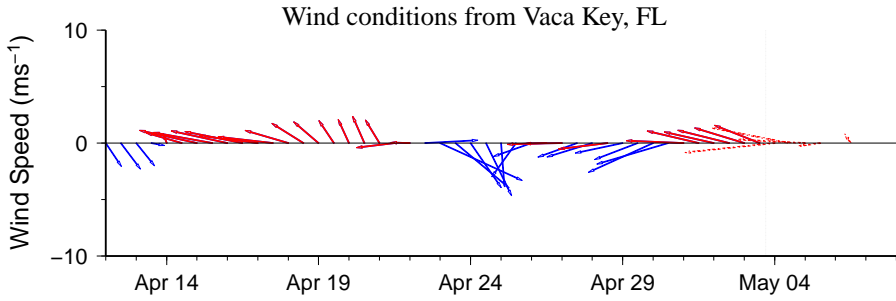
Florida Keys: No new samples have been received where blooms were detected offshore of Oxfoot Key (very low b-medium; 4/24, MML) and offshore of Sawyer Key (not present; 4/25; MML). Recent MODIS imagery remains obscured by clouds in the Florida Keys region, limiting analysis. Easterly winds through Saturday may transport the bloom westerly.

~Fenstermacher, Derner

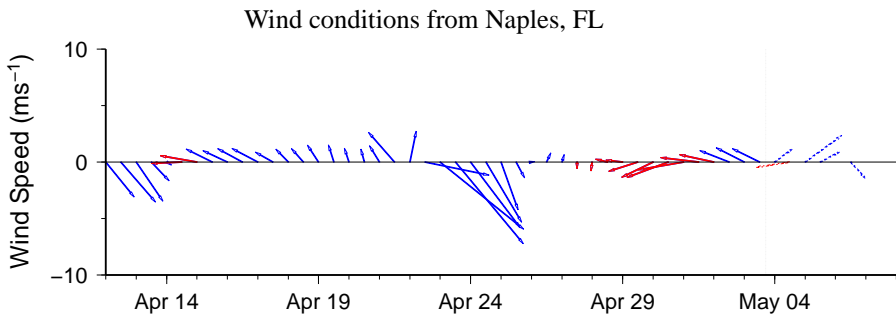
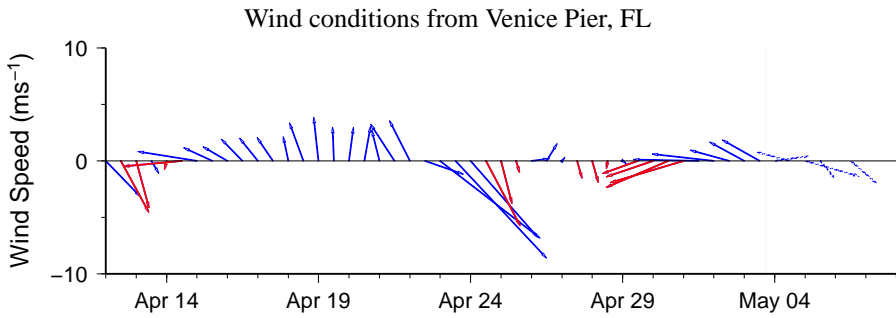
Wind Analysis

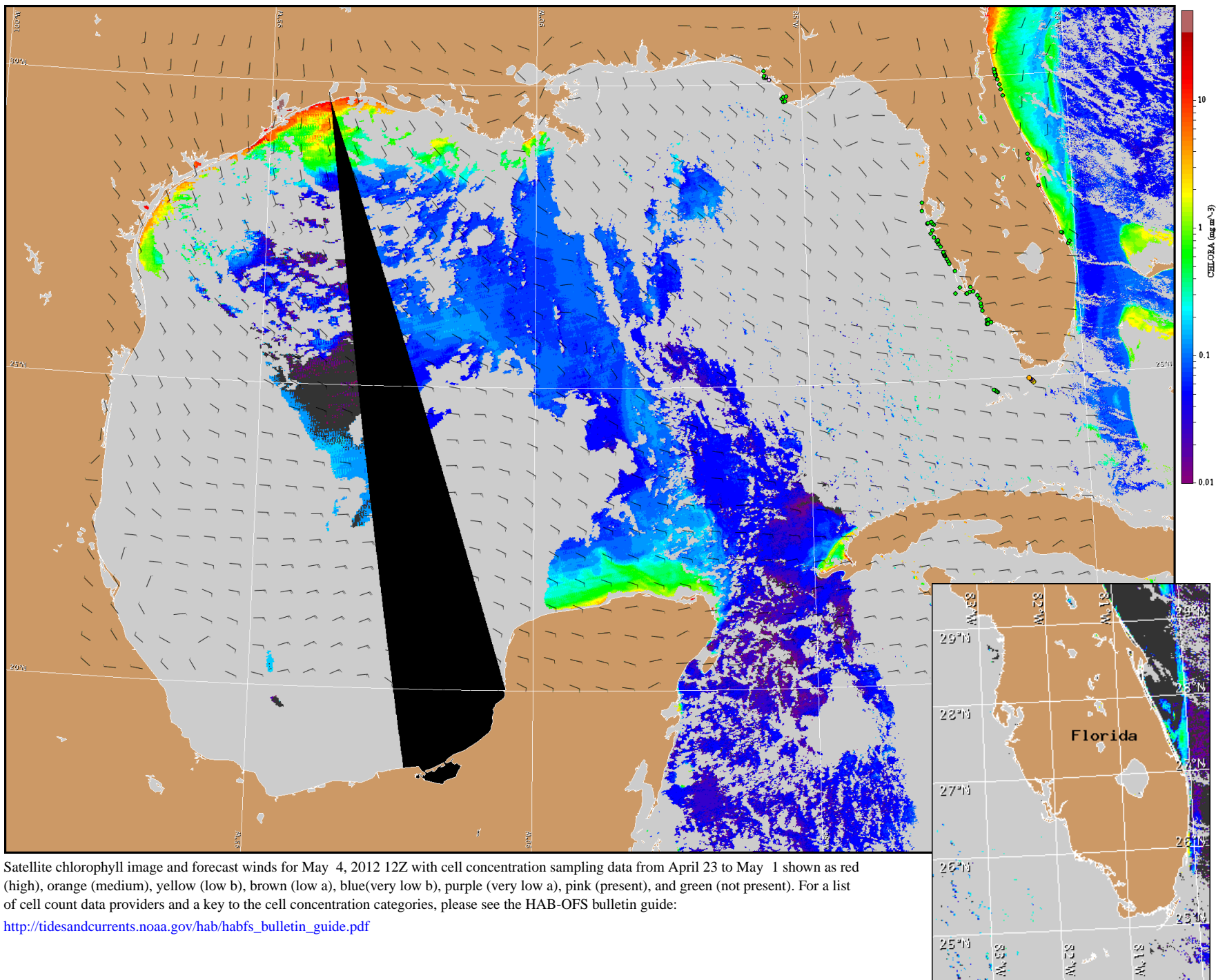
Florida Keys: East winds today through Saturday (5-20 kn, 3-10 m/s). Variable winds Saturday night through Sunday (5-10 kn, 3-5 m/s).

Pinellas to Monroe Counties: Variable westerly winds today through Saturday and west to northwesterlies on Sunday (10 kn, 5 m/s).



Wind speed and direction are averaged over 12 hours from buoy measurements. Length of line indicates speed; angle indicates direction. Red indicates that the wind direction favors upwelling near the coast. Values to the left of the dotted vertical line are measured values; values to the right are forecasts. Wind observation and forecast data provided by NOAA's National Weather Service (NWS).





Satellite chlorophyll image and forecast winds for May 4, 2012 12Z with cell concentration sampling data from April 23 to May 1 shown as red (high), orange (medium), yellow (low b), brown (low a), blue(very low b), purple (very low a), pink (present), and green (not present). For a list of cell count data providers and a key to the cell concentration categories, please see the HAB-OFS bulletin guide:

http://tidesandcurrents.noaa.gov/hab/habfs_bulletin_guide.pdf

Verified and suspected HAB areas shown in red. Other areas of high chlorophyll concentration shown in yellow (see p. 1 analysis for interpretation).