



Gulf of Mexico Harmful Algal Bloom Bulletin

Region: Southwest Florida

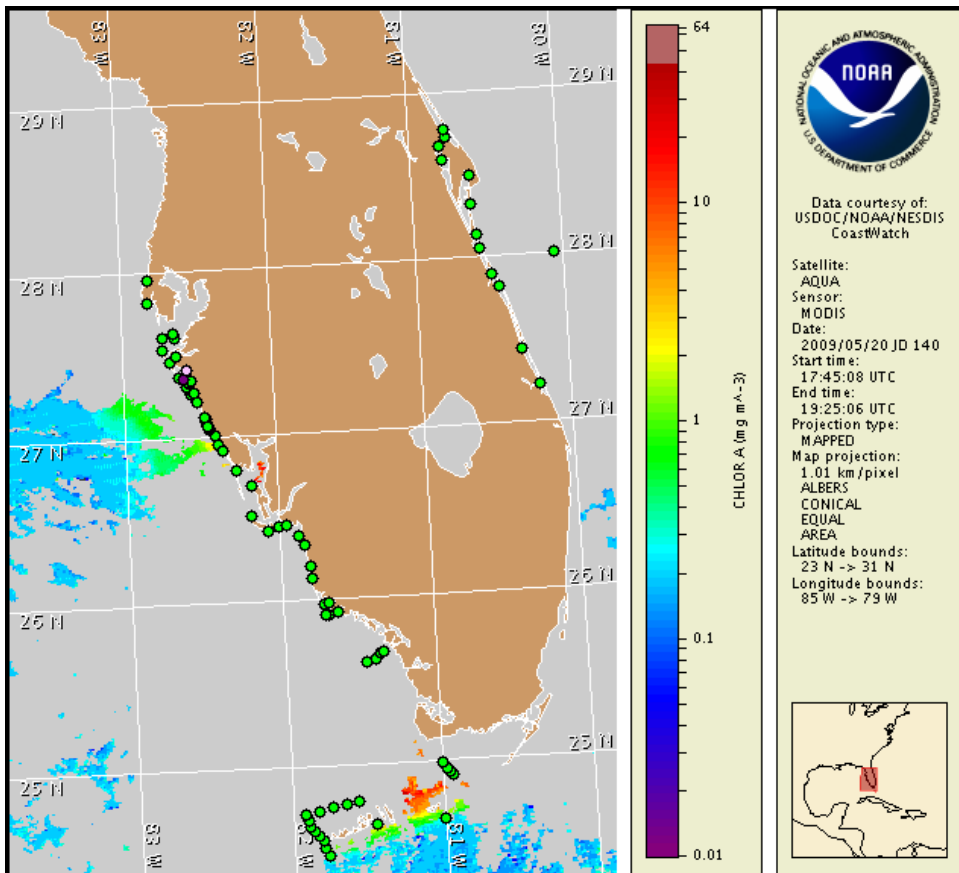
22 May 2009

NOAA Ocean Service

NOAA Satellites and Information Service

NOAA National Weather Service

Last bulletin: May 18, 2009



Satellite chlorophyll image with possible HAB areas shown by red polygon(s). Cell concentration sampling data from May 12 to 20 shown as red (high), orange (medium), yellow (low b), brown (low a), blue(very low b), purple (very low a), pink (present), and green (not present). For a list of cell count data providers and a key to the cell concentration categories, please see the HABFS bulletin guide:

http://tidesandcurrents.noaa.gov/hab/habfs_bulletin_guide.pdf

Please note the following restrictions on all SeaWiFS imagery derived from CoastWatch.

1. Data are restricted to civil marine applications only; i.e. federal, state, and local government use/distribution is permitted.
2. Image products may be published in newspapers. Any other publishing arrangements must receive GeoEye approval via the CoastWatch Program.

Conditions Report

Harmful algae have been identified in southern Sarasota Bay in Sarasota County. Patchy very low impacts are possible today through Sunday and no impacts are expected on Monday for east-facing shores of southern Sarasota Bay. No impacts are expected elsewhere alongshore southwest Florida today through Monday, May 25.

Analysis

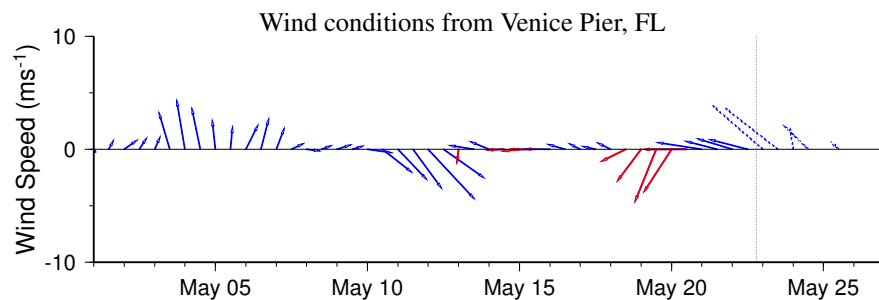
This is a supplemental bulletin to bulletin number 26 issued on Monday, May 18.

There is currently no indication of a bloom in southwest Florida; however, harmful algae have been identified in Sarasota County. Very low concentrations of *Karenia brevis* were found in a sample taken in southern Sarasota Bay and background concentrations were found in a sample taken in central Sarasota Bay in Manatee County (FWRI 5/20).

Satellite imagery has been cloudy for the past few days making it difficult to analyze chlorophyll levels in southwest Florida.

Onshore winds today through Sunday will increase the potential for impacts in east-facing shores of southern Sarasota Bay.

Urizar, Fenstermacher

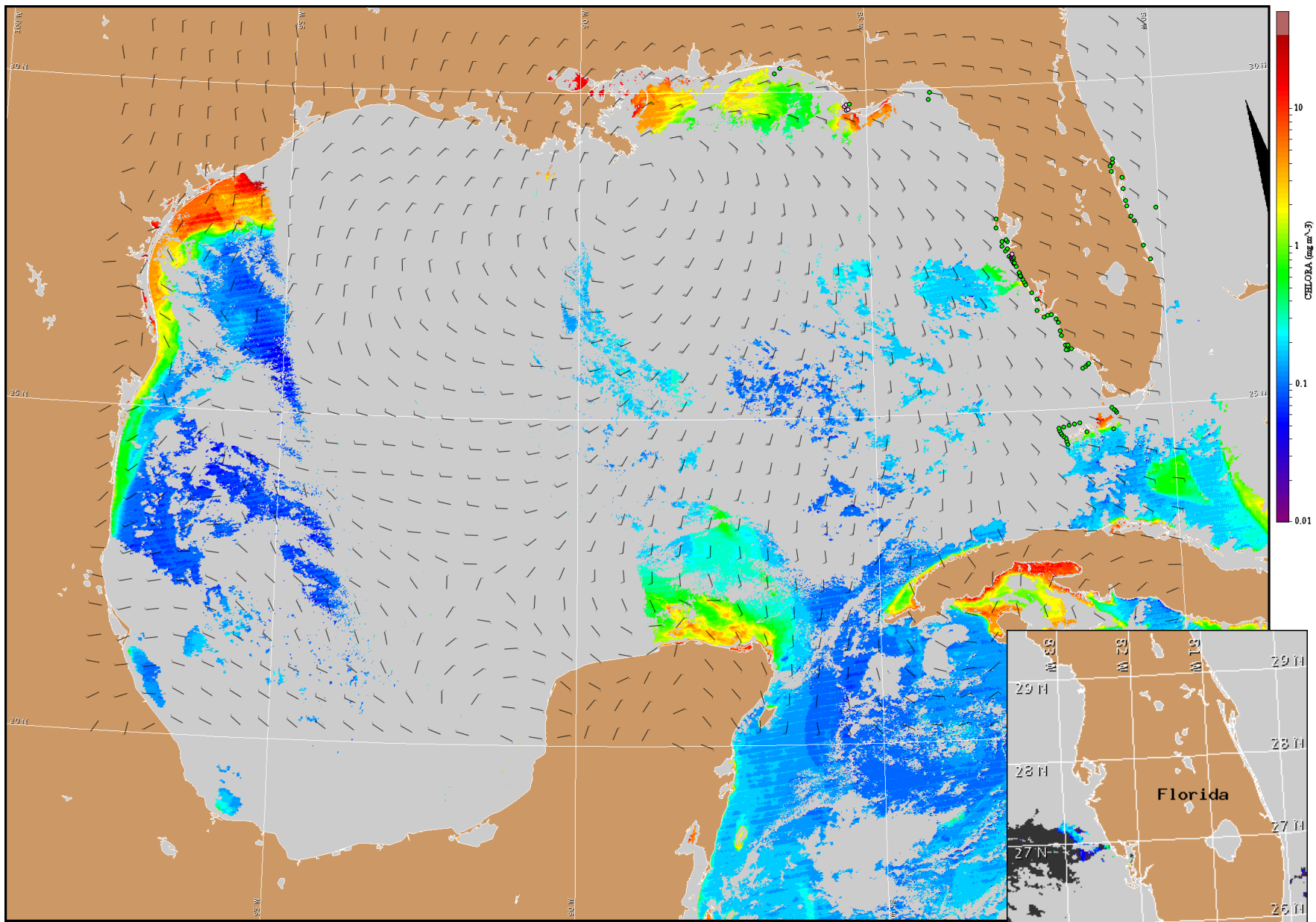


Wind speed and direction are averaged over 12 hours from buoy measurements. Length of line indicates speed; angle indicates direction. Red indicates that the wind direction favors upwelling near the coast. Values to the left of the dotted vertical line are measured values; values to the right are forecasts. Wind observation and forecast data provided by NOAA's National Weather Service (NWS).

Wind Analysis

SW Florida: Southeasterly winds today through Sunday (10-15 kn, 5-8 m/s). Variable winds Sunday night (5 kn, 3 m/s). Southeasterly winds Monday and variable winds Monday night (5 kn).

To see previous bulletins and forecasts for other Harmful Algal Bloom Bulletin regions, visit the NOAA CoastWatch bulletin archive: http://coastwatch.noaa.gov/hab/bulletins_ns.htm



Satellite chlorophyll image and forecast winds for May 23, 2009 12Z with Cell concentration sampling data from May 12 to 20 shown as red (high), orange (medium), yellow (low b), brown (low a), blue(very low b), purple (very low a), pink (present), and green (not present). For a list of cell count data providers and a key to the cell concentration categories, please see the HABFS bulletin guide:

http://tidesandcurrents.noaa.gov/hab/habfs_bulletin_guide.pdf

Verified and suspected HAB areas shown in red. Other areas of high chlorophyll concentration shown in yellow (see p. 1 analysis for interpretation).