



Gulf of Mexico Harmful Algal Bloom Bulletin

Region: Southwest Florida

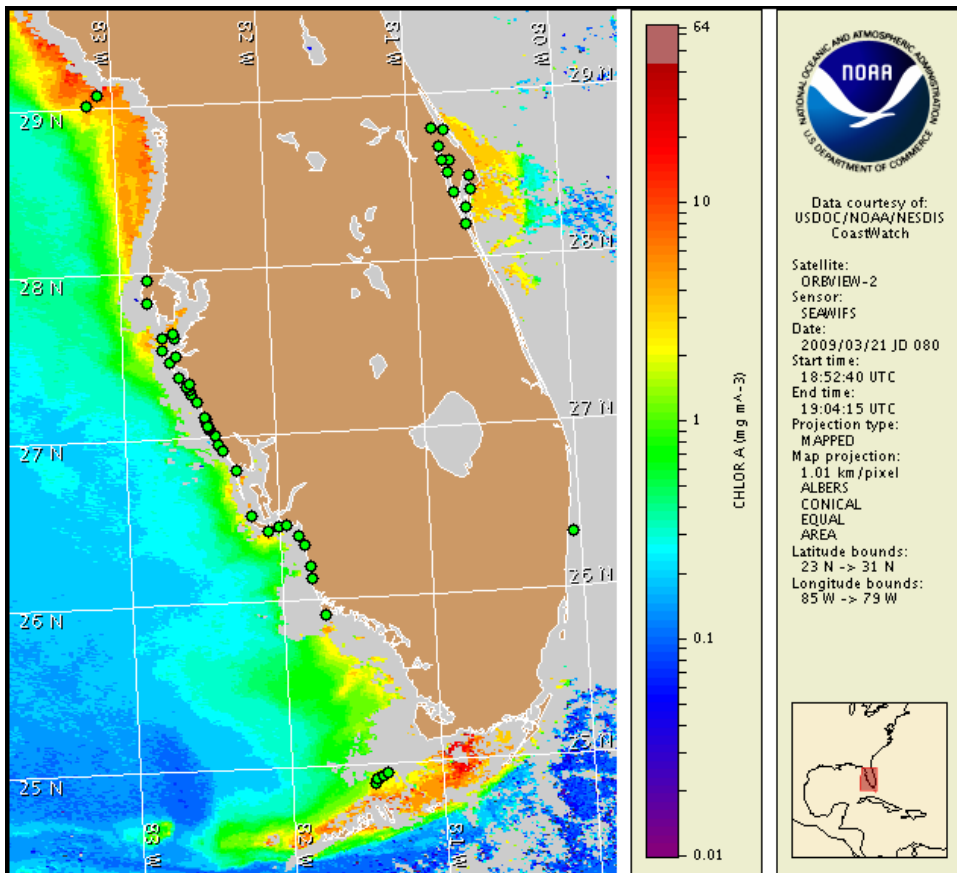
23 March 2009

NOAA Ocean Service

NOAA Satellites and Information Service

NOAA National Weather Service

Last bulletin: March 16, 2009



Satellite chlorophyll image with possible HAB areas shown by red polygon(s). Cell concentration sampling data from March 13 to 18 shown as red (high), orange (medium), yellow (low b), brown (low a), blue (very low b), purple (very low a), pink (present), and green (not present). For a list of cell count data providers and a key to the cell concentration categories, please see the HABFS bulletin guide:

http://tidesandcurrents.noaa.gov/hab/habfs_bulletin_guide.pdf

Please note the following restrictions on all SeaWiFS imagery derived from CoastWatch.

1. Data are restricted to civil marine applications only; i.e. federal, state, and local government use/distribution is permitted.
2. Image products may be published in newspapers. Any other publishing arrangements must receive GeoEye approval via the CoastWatch Program.

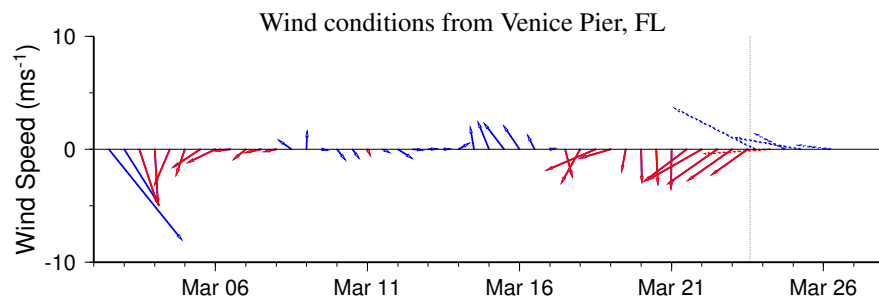
Conditions Report

There is currently no indication of a harmful algal bloom at the coast in southwest Florida including the Florida Keys. No impacts are expected alongshore southwest Florida today through Sunday, March 29.

Analysis

There is currently no indication of a harmful algal bloom at the coast in southwest Florida. No *Karenia brevis* was identified in samples collected last week alongshore and offshore southwest Florida from Pinellas to Monroe Counties (3/16-20; FWRI, SCHD, MML). Recent satellite imagery has been cloudy along the coastline and limits analysis. However, bloom formation alongshore southwest Florida is not expected today through Sunday, March 29.

~Fenstermacher, Urizar

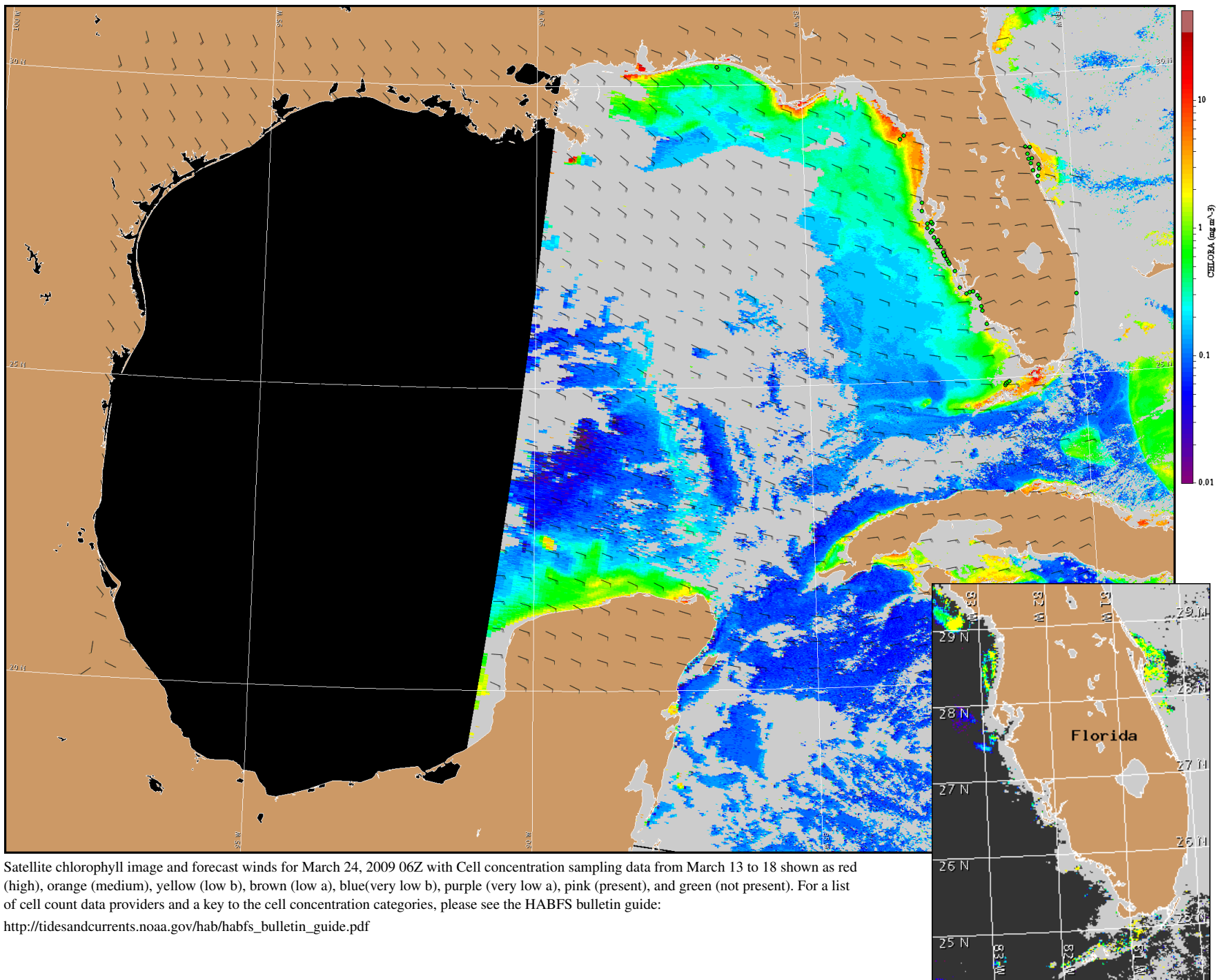


Wind speed and direction are averaged over 12 hours from buoy measurements. Length of line indicates speed; angle indicates direction. Red indicates that the wind direction favors upwelling near the coast. Values to the left of the dotted vertical line are measured values; values to the right are forecasts. Wind observation and forecast data provided by NOAA's National Weather Service (NWS).

Wind Analysis

SW Florida: Easterlies today through Tuesday (10-15 kt; 5-8 m/s). Southeasterlies on Wednesday through Friday, with onshore winds Thursday and Friday afternoons (10-15 kt).

To see previous bulletins and forecasts for other Harmful Algal Bloom Bulletin regions, visit the NOAA CoastWatch bulletin archive: http://coastwatch.noaa.gov/hab/bulletins_ns.htm



Satellite chlorophyll image and forecast winds for March 24, 2009 06Z with Cell concentration sampling data from March 13 to 18 shown as red (high), orange (medium), yellow (low b), brown (low a), blue(very low b), purple (very low a), pink (present), and green (not present). For a list of cell count data providers and a key to the cell concentration categories, please see the HABFS bulletin guide:

http://tidesandcurrents.noaa.gov/hab/habfs_bulletin_guide.pdf

Verified and suspected HAB areas shown in red. Other areas of high chlorophyll concentration shown in yellow (see p. 1 analysis for interpretation).