

Gulf of Mexico Harmful Algal Bloom Bulletin

Region: Southwest Florida

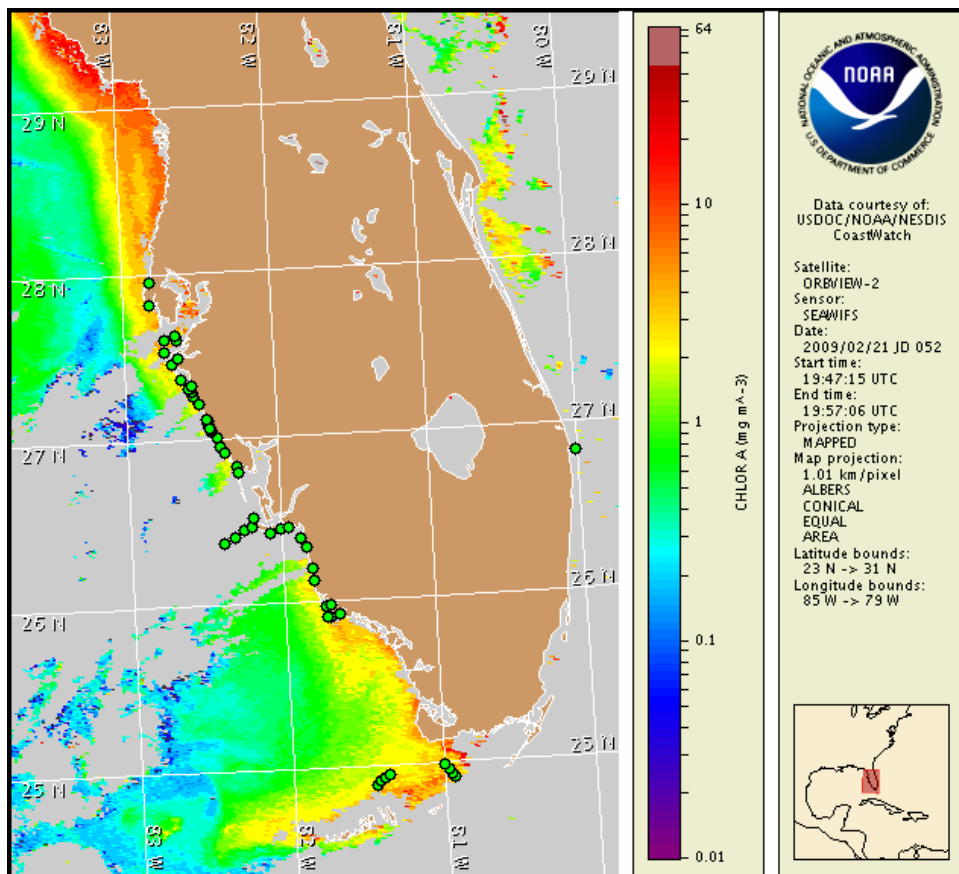
23 February 2009

NOAA Ocean Service

NOAA Satellites and Information Service

NOAA National Weather Service

Last bulletin: February 17, 2009



Satellite chlorophyll image with possible HAB areas shown by red polygon(s). Cell concentration sampling data from February 13 to 18 shown as red (high), orange (medium), yellow (low b), brown (low a), blue (very low b), purple (very low a), pink (present), and green (not present). For a list of cell count data providers and a key to the cell concentration categories, please see the HABFS bulletin guide:

http://tidesandcurrents.noaa.gov/hab/habfs_bulletin_guide.pdf

Please note the following restrictions on all SeaWiFS imagery derived from CoastWatch.

1. Data are restricted to civil marine applications only; i.e. federal, state, and local government use/distribution is permitted.
2. Image products may be published in newspapers. Any other publishing arrangements must receive GeoEye approval via the CoastWatch Program.

Conditions Report

There is currently no indication of a harmful algal bloom at the coast in southwest Florida including the Florida Keys. No impacts are expected alongshore southwest Florida today through Sunday, March 1.

Analysis

There is currently no indication of a harmful algal bloom at the coast in southwest Florida. No *Karenia brevis* was identified in samples collected last week alongshore and offshore of southwest Florida, from Pinellas to Collier Counties (FWRI, SCHD, MML, 2/16-20), with the exception of a background concentration detected 23 miles offshore of New Pass, Sarasota County (MML 2/17; not shown). Current satellite imagery is cloudy in this offshore region, however imagery from February 16-20 does not indicate any elevated chlorophyll features in that area.

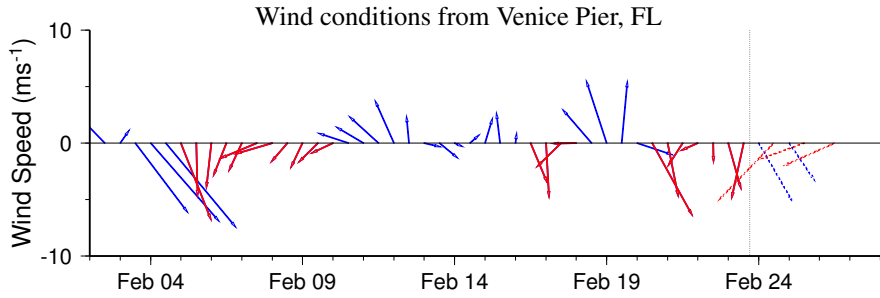
There continues to be no indication of elevated chlorophyll features present alongshore of southwest Florida. The feature located 6 to 25 miles directly west of the Marquesas Keys appears to have dissipated. Bloom formation alongshore of southwest Florida is not expected today through Sunday, March 1.

~Fenstermacher, Fisher

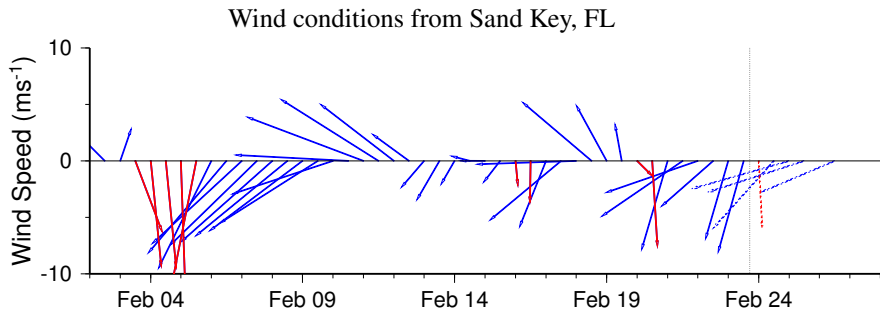
Wind Analysis

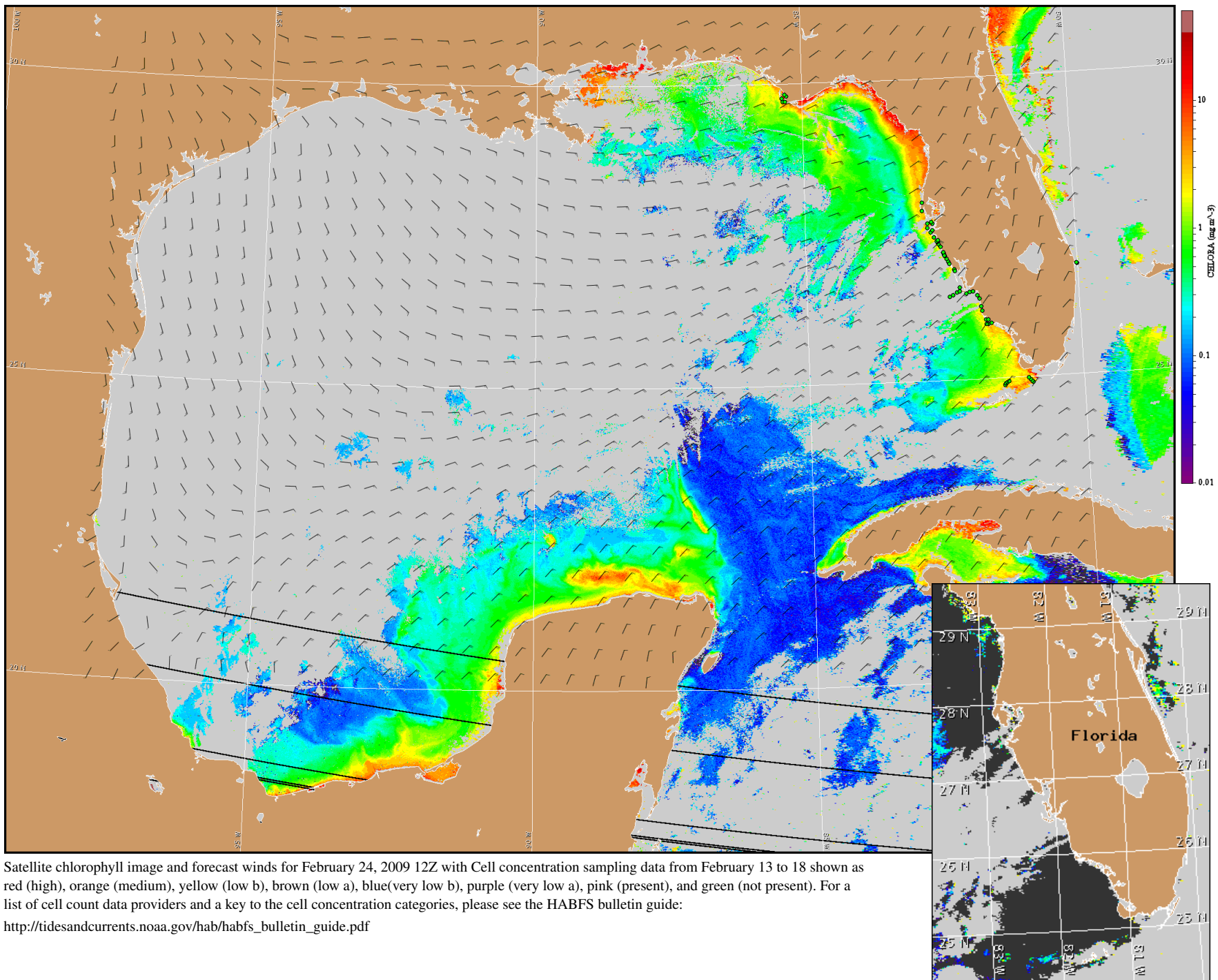
SW Florida: North to northeast winds today (10-15 kn; 5-8 m/s). Variable northeast to east winds Tuesday through Wednesday (5-15 kn; 3-8 m/s). Southeast to east winds on Thursday and southeast to southwest winds on Friday (5-10 kn).

Florida Keys: North to northeast winds today though Tuesday (15-20 kn; 8-10 m/s). Northeast to east winds Tuesday night through Thursday and east winds on Friday (10-15 kn; 5-8 m/s).



Wind speed and direction are averaged over 12 hours from buoy measurements. Length of line indicates speed; angle indicates direction. Red indicates that the wind direction favors upwelling near the coast. Values to the left of the dotted vertical line are measured values; values to the right are forecasts. Wind observation and forecast data provided by NOAA's National Weather Service (NWS).





Satellite chlorophyll image and forecast winds for February 24, 2009 12Z with Cell concentration sampling data from February 13 to 18 shown as red (high), orange (medium), yellow (low b), brown (low a), blue(very low b), purple (very low a), pink (present), and green (not present). For a list of cell count data providers and a key to the cell concentration categories, please see the HABFS bulletin guide:

http://tidesandcurrents.noaa.gov/hab/habfs_bulletin_guide.pdf

Verified and suspected HAB areas shown in red. Other areas of high chlorophyll concentration shown in yellow (see p. 1 analysis for interpretation).