



# Gulf of Mexico Harmful Algal Bloom Bulletin

Region: Southwest Florida

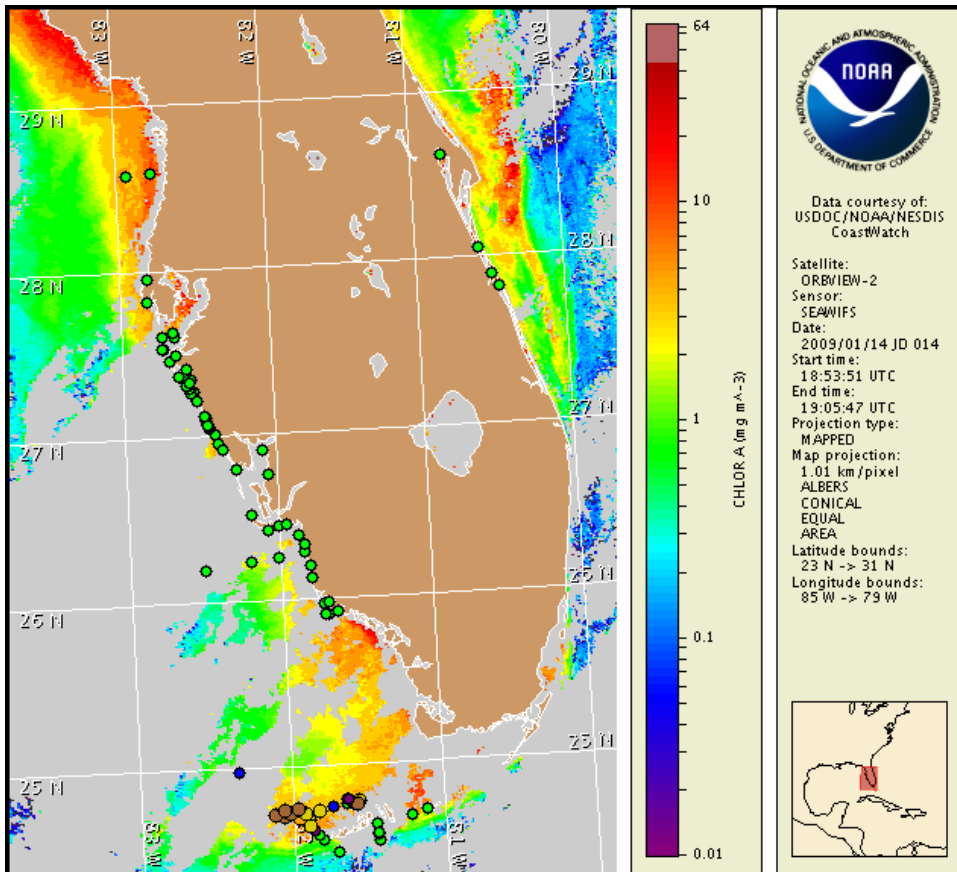
15 January 2009

NOAA Ocean Service

NOAA Satellites and Information Service

NOAA National Weather Service

Last bulletin: January 12, 2009



Satellite chlorophyll image with possible HAB areas shown by red polygon(s). Cell concentration sampling data from January 5 to 14 shown as red (high), orange (medium), yellow (low b), brown (low a), blue (very low b), purple (very low a), pink (present), and green (not present). For a list of cell count data providers and a key to the cell concentration categories, please see the HABFS bulletin guide:

[http://tidesandcurrents.noaa.gov/hab/habfs\\_bulletin\\_guide.pdf](http://tidesandcurrents.noaa.gov/hab/habfs_bulletin_guide.pdf)

Please note the following restrictions on all SeaWiFS imagery derived from CoastWatch.

1. Data are restricted to civil marine applications only; i.e. federal, state, and local government use/distribution is permitted.
2. Image products may be published in newspapers. Any other publishing arrangements must receive GeoEye approval via the CoastWatch Program.

## Conditions Report

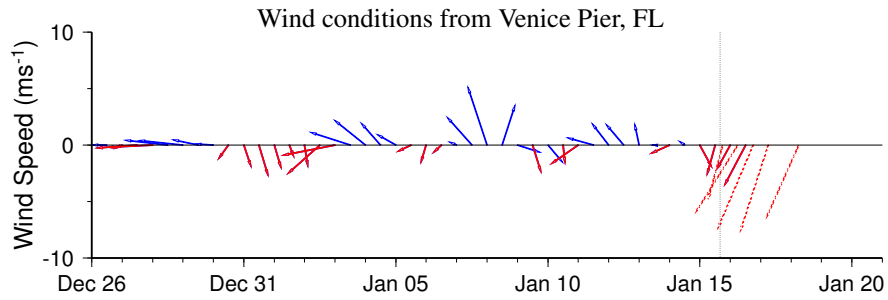
A harmful algal bloom has been identified on the gulf side of the lower Florida Keys in Monroe County. Patchy, moderate impacts are possible today through Monday. On Tuesday, up to patchy, moderate impacts are possible. No additional impacts are expected elsewhere in southwest Florida today through Tuesday, January 20.

## Analysis

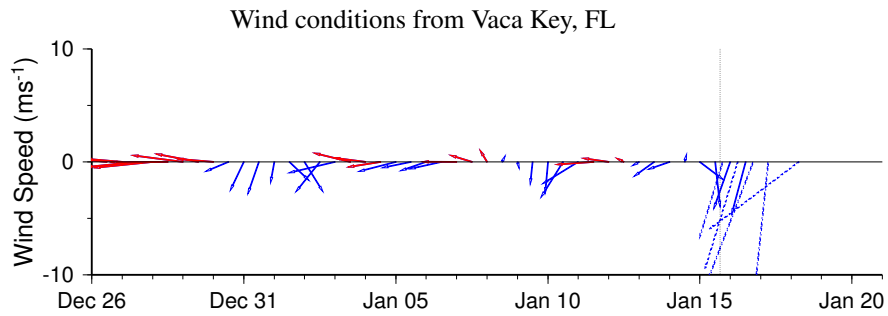
A harmful algal bloom has been reconfirmed offshore on the gulf side of the lower Florida Keys last week (1/6, 1/9; FWRI, MML; Present to Low b). Recent satellite imagery is obscured by clouds in southwest Florida. However, a large elevated chlorophyll feature remains partially visible north of Marquesas Keys in SeaWiFS imagery (1/14). Southward transportation is likely today through Monday due to strong northerly winds. Continued sampling is recommended.

\* Due to the coming Federal holidays of Martin Luther King Jr. Day and Inauguration Day, next bulletin will be issued on Wednesday, January 21.

~ Gan, Fenstermacher



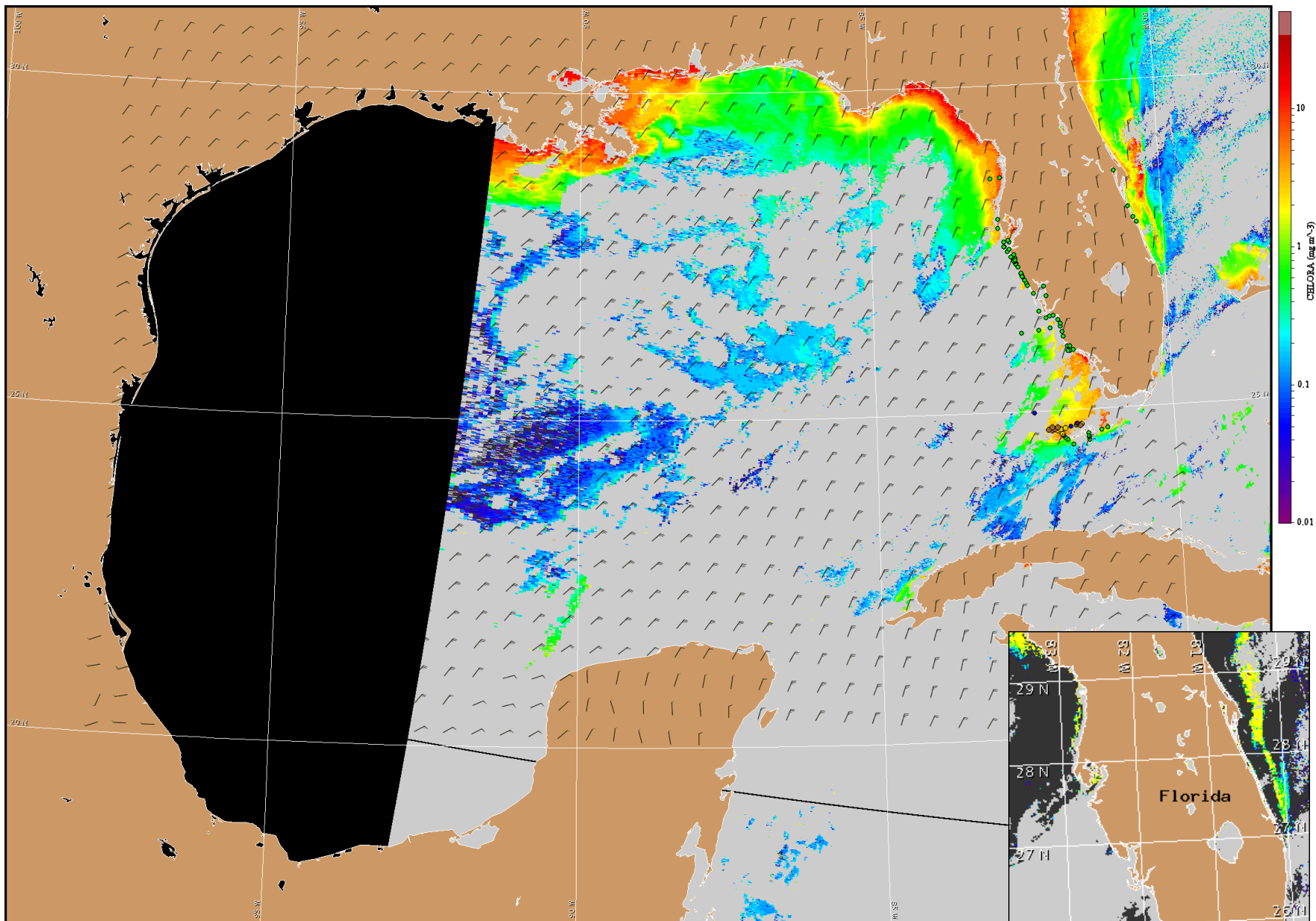
Wind speed and direction are averaged over 12 hours from buoy measurements. Length of line indicates speed; angle indicates direction. Red indicates that the wind direction favors upwelling near the coast. Values to the left of the dotted vertical line are measured values; values to the right are forecasts. Wind observation and forecast data provided by NOAA's National Weather Service (NWS).



## Wind Analysis

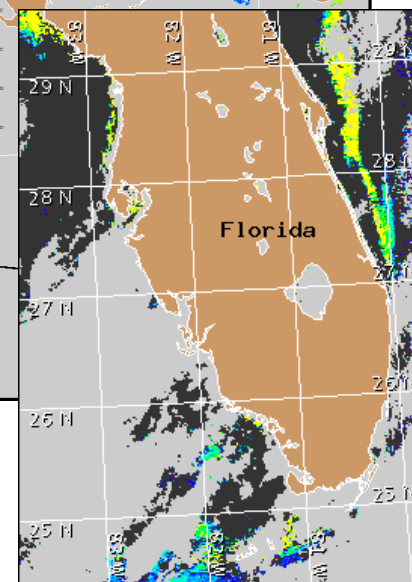
SW Florida: North winds today (10-15kn, 5-8m/s). Northeast winds tonight (15-20kn, 8-10m/s). North winds Friday and Saturday (15-20kn), shifting to northeast winds Saturday night (10kn). Northeast winds Sunday (10kn). Southwest winds Monday (15kn).

Florida Keys: North to northeast winds today through Saturday (15-25kn, 8-13m/s). North winds Sunday (15kn). West to northwest winds Monday (10-15kn, 5-8m/s).



Satellite chlorophyll image and forecast winds for January 16, 2009 12Z with Cell concentration sampling data from January 5 to 14 shown as red (high), orange (medium), yellow (low b), brown (low a), blue(very low b), purple (very low a), pink (present), and green (not present). For a list of cell count data providers and a key to the cell concentration categories, please see the HABFS bulletin guide:

[http://tidesandcurrents.noaa.gov/hab/habfs\\_bulletin\\_guide.pdf](http://tidesandcurrents.noaa.gov/hab/habfs_bulletin_guide.pdf)



Verified and suspected HAB areas shown in red. Other areas of high chlorophyll concentration shown in yellow (see p. 1 analysis for interpretation).