



Gulf of Mexico Harmful Algal Bloom Bulletin

Region: South Florida

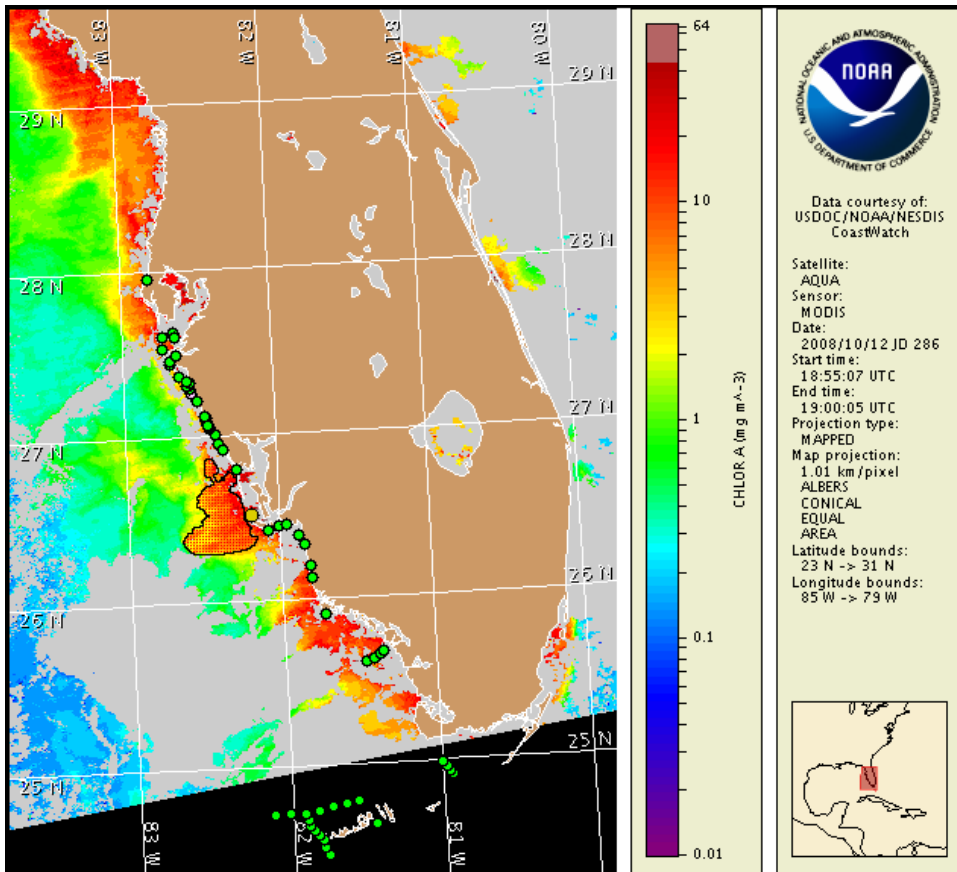
16 October 2008

NOAA Ocean Service

NOAA Satellites and Information Service

NOAA National Weather Service

Last bulletin: October 14, 2008



Satellite chlorophyll image with possible HAB areas shown by red polygon(s). Cell concentration sampling data from October 6 to 13 shown as red (high), orange (medium), yellow (low b), brown (low a), blue (very low b), purple (very low a), pink (present), and green (not present). For a list of cell count data providers and a key to the cell concentration categories, please see the HABFS bulletin guide:

http://tidesandcurrents.noaa.gov/hab/habfs_bulletin_guide.pdf

Please note the following restrictions on all SeaWiFS imagery derived from CoastWatch.

1. Data are restricted to civil marine applications only; i.e. federal, state, and local government use/distribution is permitted.
2. Image products may be published in newspapers. Any other publishing arrangements must receive GeoEye approval via the CoastWatch Program.

Conditions Report

A harmful algal bloom has been identified in northern Lee County. Patchy very low impacts are possible today through Monday, with patchy moderate impacts possible on Saturday. No other impacts are expected alongshore southwest Florida today through Monday, October 20.

Analysis

A harmful algal bloom has been identified from Cayo Costa State Park to Captiva Island regions of Lee County (Very Lowa-Medium; 10/8-13, FWRI; not shown due to technical difficulties). The previously identified bloom onshore of southern Sanibel Island may have dissipated - recent samples indicate *Karenia brevis* is not present (10/8, FWRI). *K. brevis* has also been found offshore of Sanibel Island and northern Collier County (Very Lowa-Lowa, 10/4-10; FWRI). Background concentrations were collected onshore near Siesta Key and New Pass in Sarasota County, Gasparilla Fishing Pier in Charlotte County, Pine Island in Lee County, and Clam Pass in Collier County (10/6-14; FWRI, SCHD). A more recent sample in Clam Pass indicates *K. brevis* is not present (10/13, SCHD).

Due to technical difficulties, the imagery shown is from October 12. Imagery from October 15 has a broad region of patchy, elevated to high chlorophyll levels (5-10 µg/L) alongshore and offshore Lee County (up to 8 miles west of Captiva Islands and 25 miles west of Sanibel Island). Imagery from October 14 has a patch of high chlorophyll (>10 µg/L) located offshore of Gasparilla Island, centered at 26°46'33"N, 82°25'28"W. Clouds limit analysis alongshore of the Captive Islands and Collier County. Continued sampling is recommended throughout these regions.

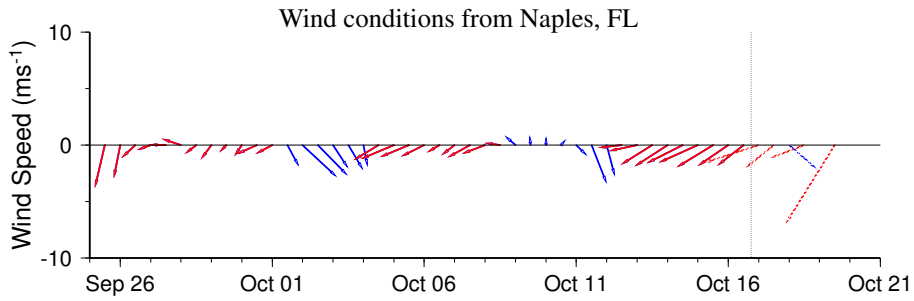
Upwelling favorable conditions will continue through Monday, with a break on Saturday. Bloom intensification is possible. Generally offshore winds will limit onshore impacts through Monday, except on Saturday.

Please note that due to technical difficulties, SeaWiFS imagery is temporarily unavailable for display in this bulletin; MODIS imagery is shown on pages 1 and 3 of this bulletin.

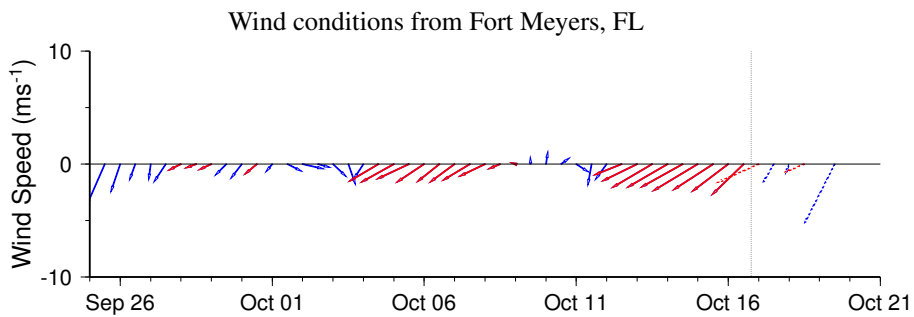
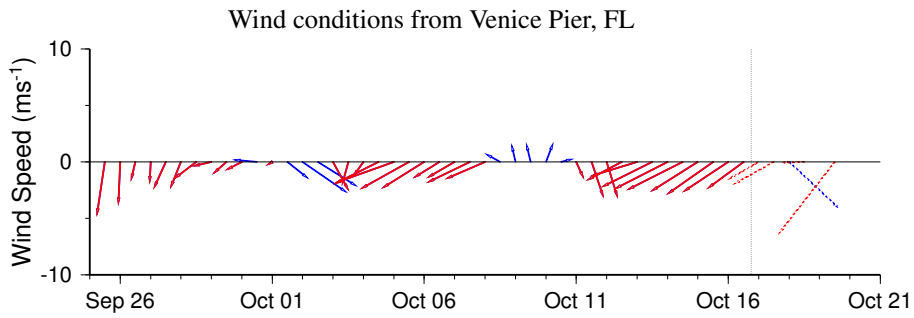
~Fenstermacher, Urizar, Gan, Lindley

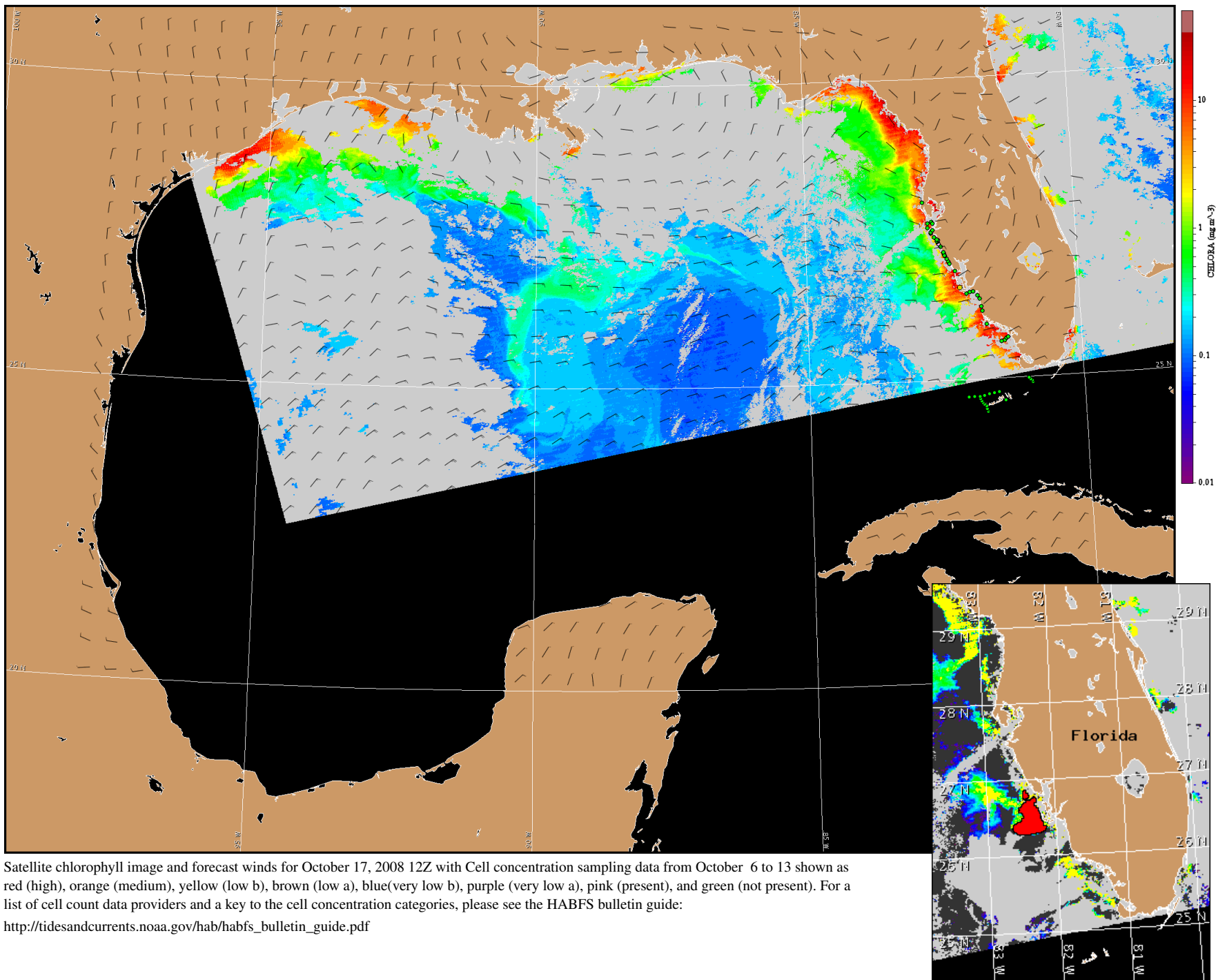
Wind Analysis

Northeast winds today followed by east winds tonight (5-10kn, 3-5m/s). North winds Friday (5-10kn, 3-5m/s). Northwest winds Saturday (10kn), becoming northeast on Saturday night through Monday (15-20kn, 8-10m/s).



Wind speed and direction are averaged over 12 hours from buoy measurements. Length of line indicates speed; angle indicates direction. Red indicates that the wind direction favors upwelling near the coast. Values to the left of the dotted vertical line are measured values; values to the right are forecasts. Wind observation and forecast data provided by NOAA's National Weather Service (NWS).





Satellite chlorophyll image and forecast winds for October 17, 2008 12Z with Cell concentration sampling data from October 6 to 13 shown as red (high), orange (medium), yellow (low b), brown (low a), blue(very low b), purple (very low a), pink (present), and green (not present). For a list of cell count data providers and a key to the cell concentration categories, please see the HABFS bulletin guide:

http://tidesandcurrents.noaa.gov/hab/habfs_bulletin_guide.pdf

Verified and suspected HAB areas shown in red. Other areas of high chlorophyll concentration shown in yellow (see p. 1 analysis for interpretation).