



Gulf of Mexico Harmful Algal Bloom Bulletin

Region: South Florida

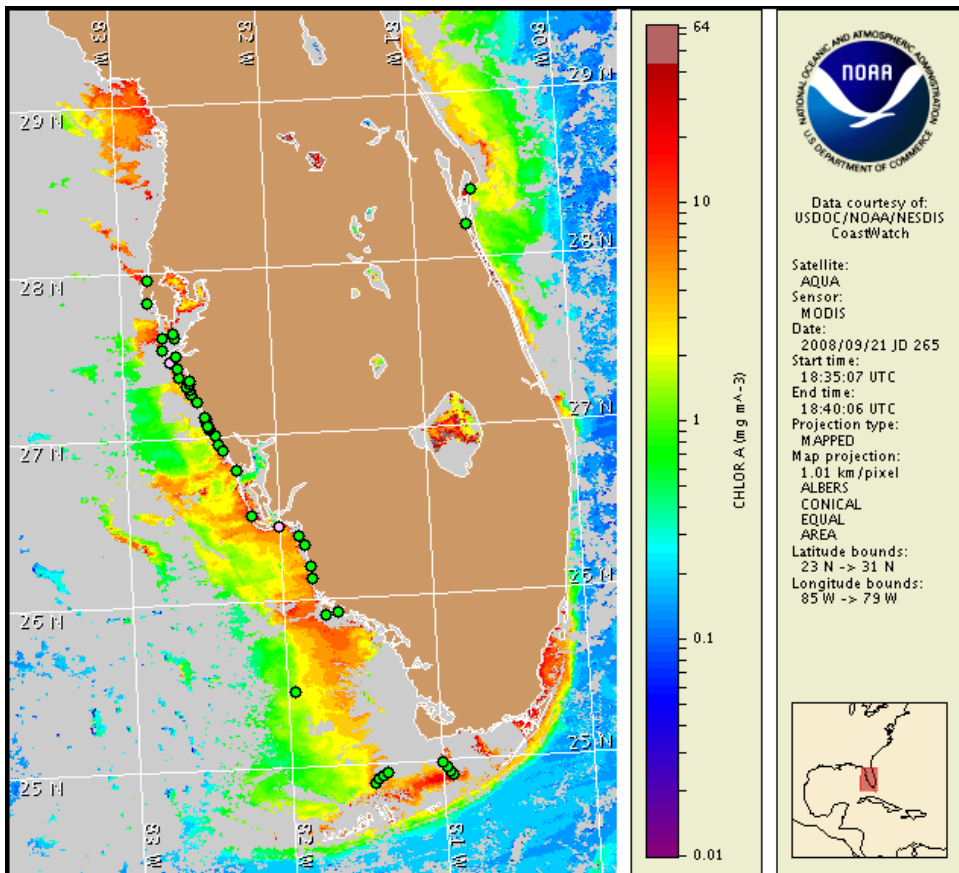
22 September 2008

NOAA Ocean Service

NOAA Satellites and Information Service

NOAA National Weather Service

Last bulletin: September 15, 2008



Satellite chlorophyll image with possible HAB areas shown by red polygon(s). Cell concentration sampling data from September 15 to 17 shown as red (high), orange (medium), yellow (low b), brown (low a), blue (very low b), purple (very low a), pink (present), and green (not present). For a list of cell count data providers and a key to the cell concentration categories, please see the HABFS bulletin guide:

http://tidesandcurrents.noaa.gov/hab/habfs_bulletin_guide.pdf

Please note the following restrictions on all SeaWiFS imagery derived from CoastWatch.

1. Data are restricted to civil marine applications only; i.e. federal, state, and local government use/distribution is permitted.
2. Image products may be published in newspapers. Any other publishing arrangements must receive GeoEye approval via the CoastWatch Program.

Conditions Report

SW Florida: There is currently no indication of a harmful algal bloom at the coast in southwest Florida. No impacts are expected alongshore southwest Florida today through Sunday, September 28.

Analysis

There is currently no indication of a harmful algal bloom at the coast in southwest Florida. Two samples (one from Manatee County and one from Lee County (FWRI; 9/16-17)) indicate background concentrations of *Karenia brevis*. All remaining samples collected at the coast from Pinellas to Collier County and from the Florida Keys indicate that *K. brevis* is not present (FWRI 9/15-17; SCHD 9/15; MML 9/15-16); while various species of non-harmful algae remain. MODIS satellite imagery (9/21) indicates that chlorophyll levels have declined throughout southwest Florida over the past few days. Small patches of elevated chlorophyll levels ($> 3 \mu\text{L}$) remain visible offshore Charlotte and Lee Counties (approximately 5-8 mi offshore). Continued sampling is recommended.

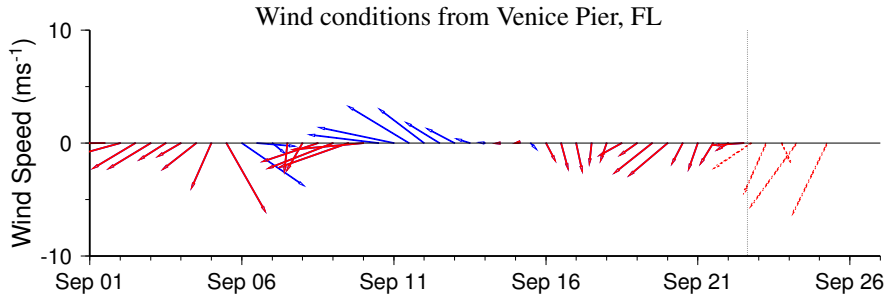
Continued northeasterly to northerly winds are expected throughout the week; however, bloom formation is unlikely today through Friday, September 26. No impacts are expected alongshore southwest Florida today through Sunday, September 28.

Please note that due to past technical difficulties, SeaWiFS imagery is temporarily unavailable for display on this bulletin; MODIS imagery is shown on pages 1 and 3 of this bulletin.

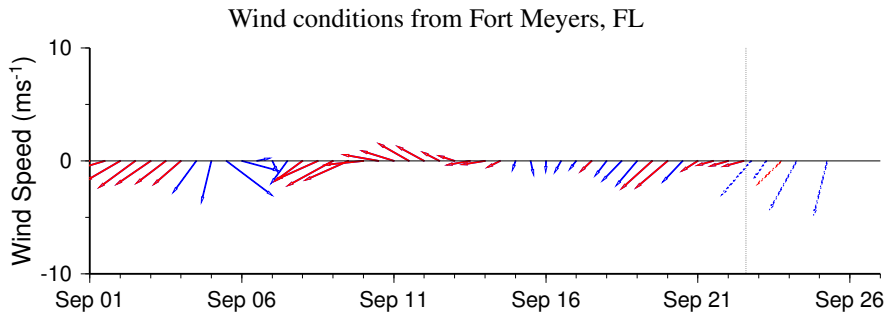
Urizar, Fisher

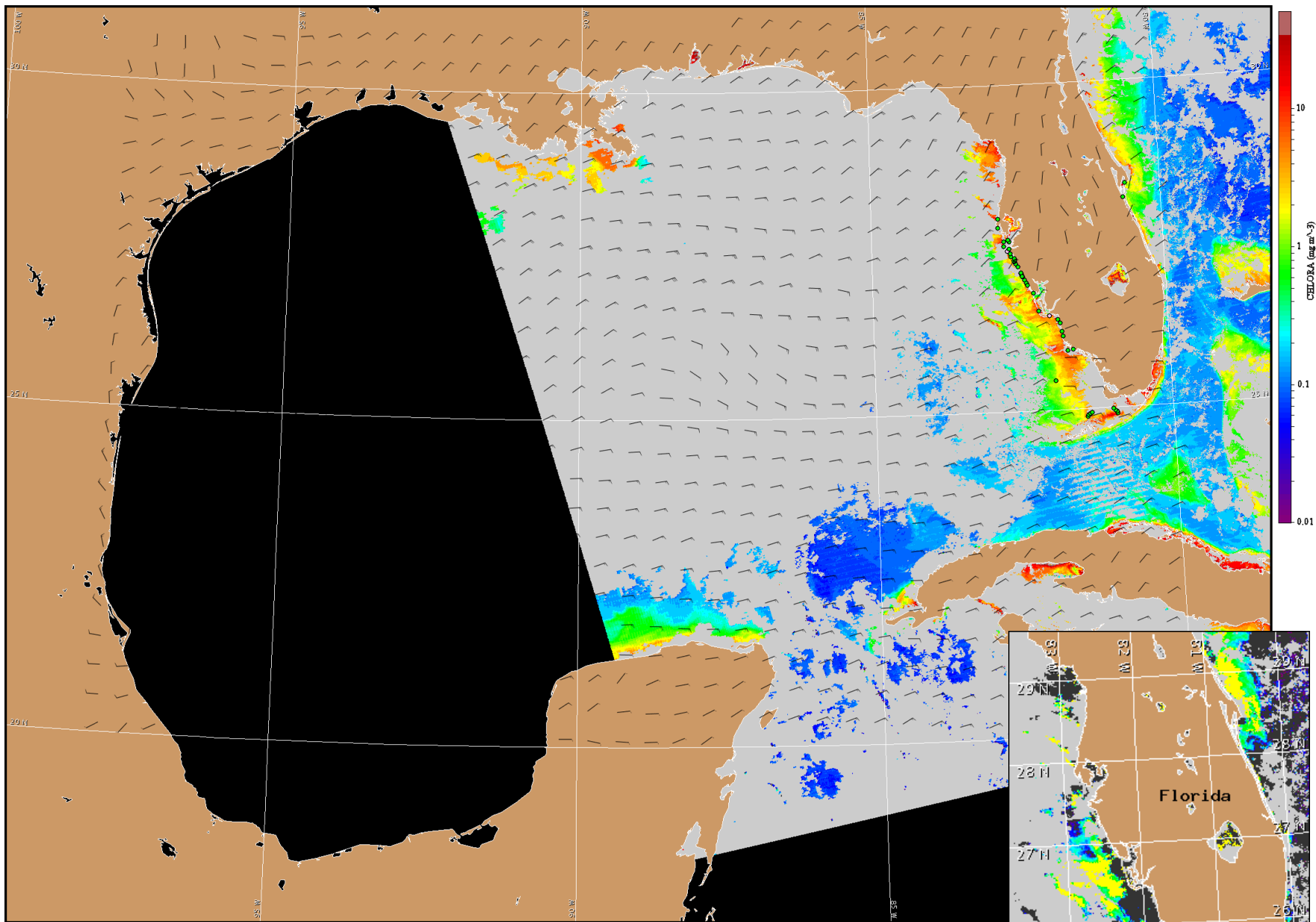
Wind Analysis

SW Florida: Northeasterly winds (10-15 kn, 5-8 m/s) today through Wednesday night.
Northerly winds (10 kn) Thursday and Friday.



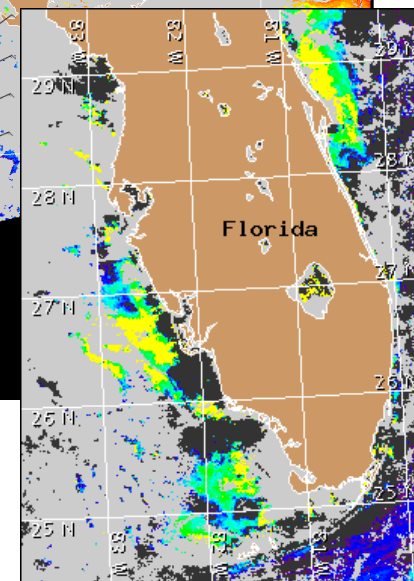
Wind speed and direction are averaged over 12 hours from buoy measurements. Length of line indicates speed; angle indicates direction. Red indicates that the wind direction favors upwelling near the coast. Values to the left of the dotted vertical line are measured values; values to the right are forecasts. Wind observation and forecast data provided by NOAA's National Weather Service (NWS).





Satellite chlorophyll image and forecast winds for September 23, 2008 06Z with Cell concentration sampling data from September 15 to 17 shown as red (high), orange (medium), yellow (low b), brown (low a), blue(very low b), purple (very low a), pink (present), and green (not present). For a list of cell count data providers and a key to the cell concentration categories, please see the HABFS bulletin guide:

http://tidesandcurrents.noaa.gov/hab/habfs_bulletin_guide.pdf



Verified and suspected HAB areas shown in red. Other areas of high chlorophyll concentration shown in yellow (see p. 1 analysis for interpretation).