



# Gulf of Mexico Harmful Algal Bloom Bulletin

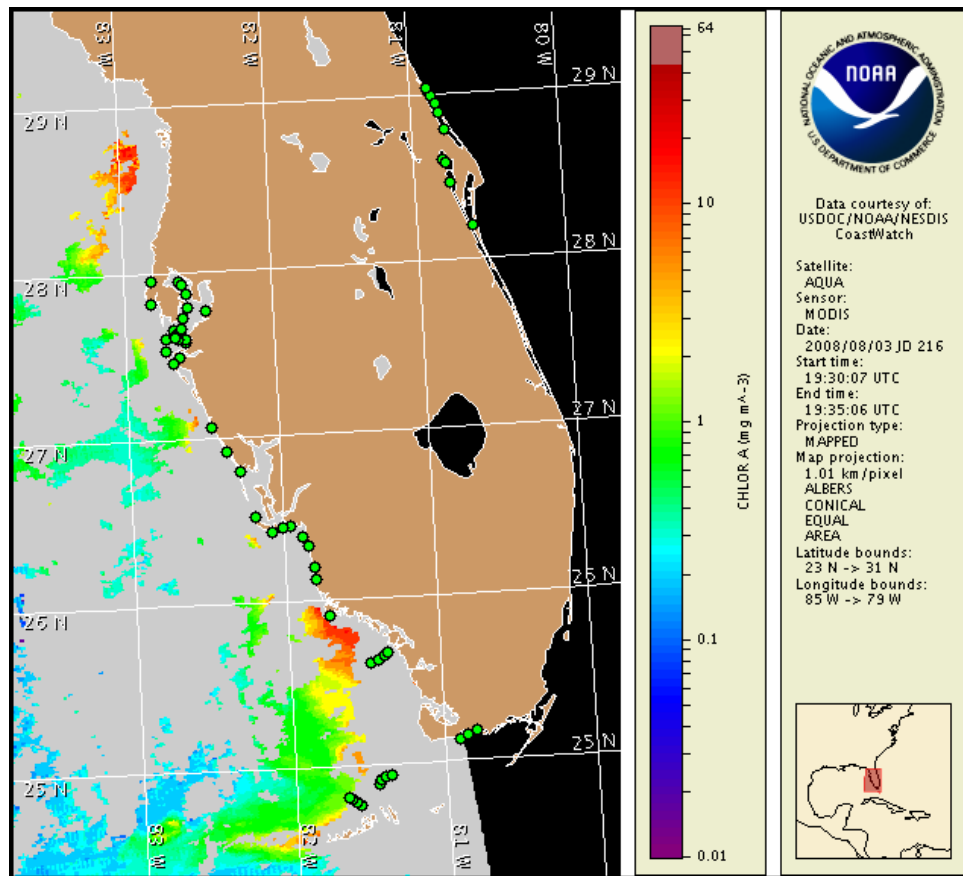
Region: South Florida

4 August 2008

NOAA Ocean Service

NOAA Satellites and Information Service

Last bulletin: July 28, 2008



Satellite chlorophyll image with possible HAB areas shown by red polygon(s). Cell concentration sampling data from July 25 to 31 shown as red (high), orange (medium), yellow (low b), brown (low a), blue (very low b), purple (very low a), pink (present), and green (not present). For a list of cell count data providers and a key to the cell concentration categories, please see the HABFS bulletin guide:

[http://www.csc.noaa.gov/crs/habf/habfs\\_bulletin\\_guide.pdf](http://www.csc.noaa.gov/crs/habf/habfs_bulletin_guide.pdf)

Please note the following restrictions on all SeaWiFS imagery derived from CoastWatch.

1. Data are restricted to civil marine applications only; i.e. federal, state, and local government use/distribution is permitted.
2. Image products may be published in newspapers. Any other publishing arrangements must receive GeoEye approval via the CoastWatch Program.

## Conditions Report

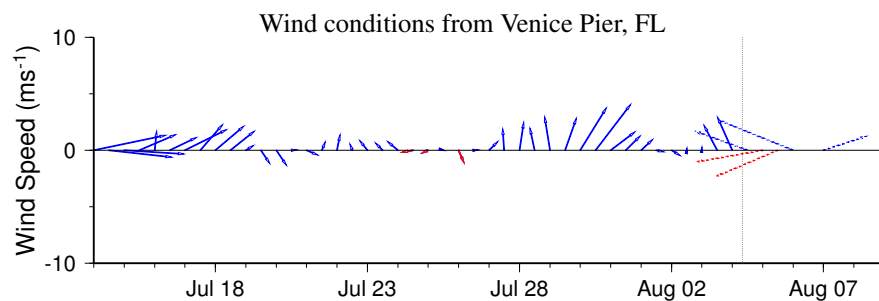
There is currently no indication of a harmful algal bloom at the coast in southwest Florida. No impacts are expected alongshore southwest Florida today through Sunday, August 10.

## Analysis

There is currently no indication of a harmful algal bloom at the coast in southwest Florida. No *Karenia brevis* was found in samples collected last week between Pinellas County and the Florida Keys (FWRI, MML, SCHD; 7/30-8/1). Cloud cover has obscured recent satellite imagery, limiting analysis. Imagery from July 31 continued to show patches of elevated to high chlorophyll alongshore SW Florida due to confirmed non-harmful algae. Dead fish have been reported in the upper Tampa Bay, but are not due to *K. brevis* (FWRI, 08/01). Upwelling conditions are possible through Wednesday, August 6, however bloom formation alongshore is unlikely. No impacts are expected along the coast through Sunday, August 10.

Please note that SeaWiFS imagery is temporarily unavailable for display on this bulletin due to technical difficulties; MODIS imagery is shown on pages 1 and 2 of this bulletin.

~Fenstermacher, Fisher

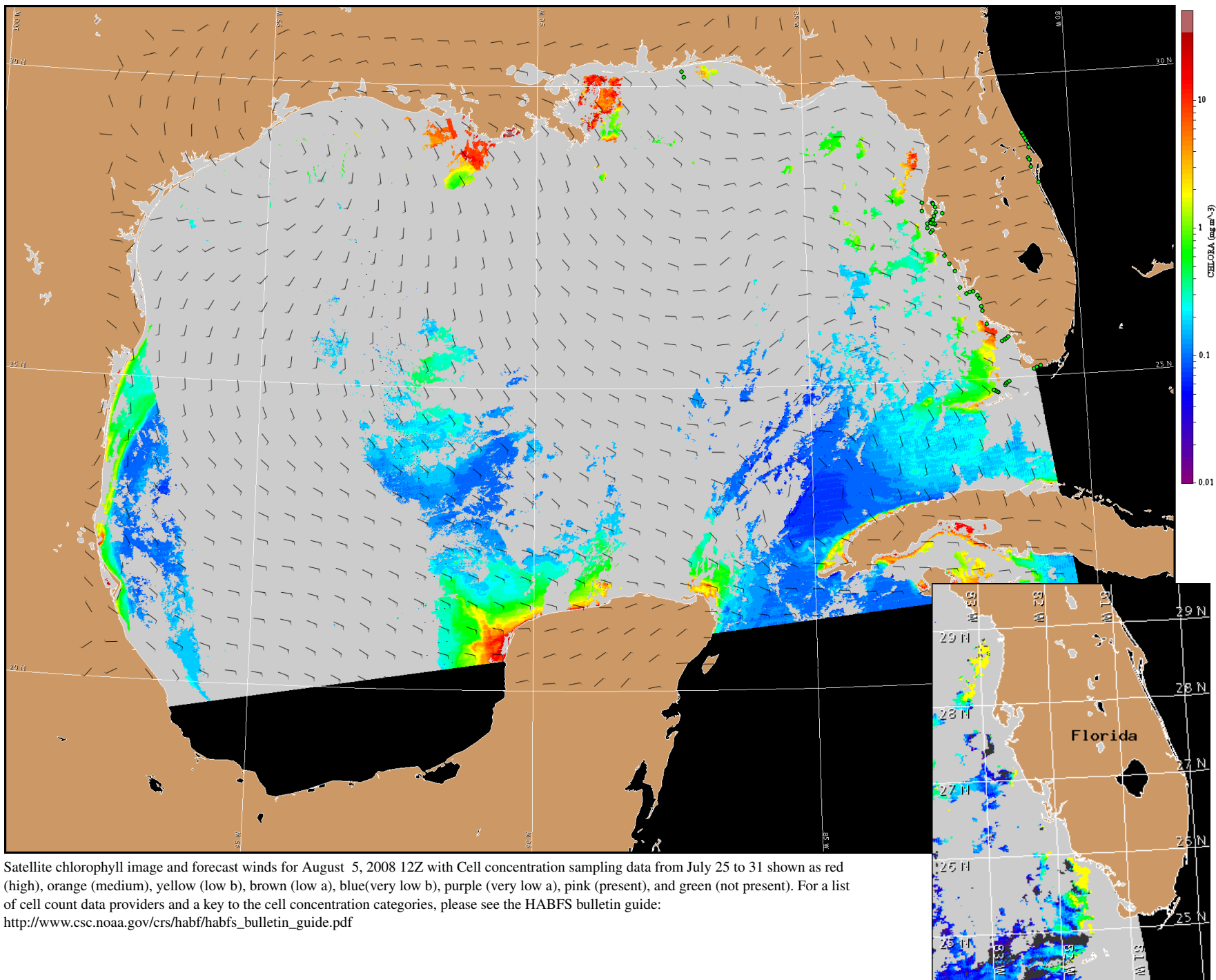


Wind speed and direction are averaged over 12 hours from buoy measurements. Length of line indicates speed; angle indicates direction. Red indicates that the wind direction favors upwelling near the coast. Values to the left of the dotted vertical line are measured values; values to the right are forecasts.

## Wind Analysis

SW Florida: Southeast to easterly winds today through Wednesday, with onshore winds in the afternoon (5-10 kns; 3-5 m/s). Southwesterlies Thursday and Friday (5-10 kns; 3-5 m/s)

To see previous bulletins and forecasts for other Harmful Algal Bloom Bulletin regions, visit the NOAA CoastWatch bulletin archive: [http://coastwatch.noaa.gov/hab/bulletins\\_ns.htm](http://coastwatch.noaa.gov/hab/bulletins_ns.htm)



Satellite chlorophyll image and forecast winds for August 5, 2008 12Z with Cell concentration sampling data from July 25 to 31 shown as red (high), orange (medium), yellow (low b), brown (low a), blue(very low b), purple (very low a), pink (present), and green (not present). For a list of cell count data providers and a key to the cell concentration categories, please see the HABFS bulletin guide: [http://www.csc.noaa.gov/crs/habf/habfs\\_bulletin\\_guide.pdf](http://www.csc.noaa.gov/crs/habf/habfs_bulletin_guide.pdf)

Verified and suspected HAB areas shown in red. Other areas of high chlorophyll concentration shown in yellow (see p. 1 analysis for interpretation).