



# Gulf of Mexico Harmful Algal Bloom Bulletin

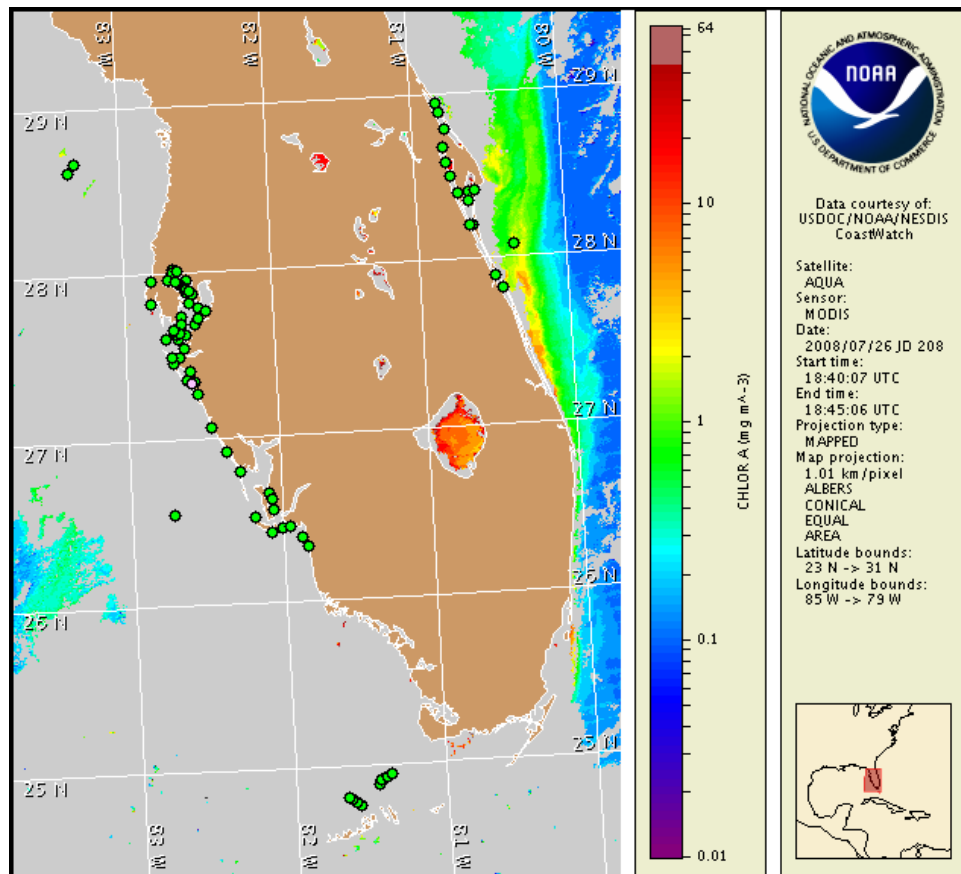
Region: South Florida

28 July 2008

NOAA Ocean Service

NOAA Satellites and Information Service

Last bulletin: July 21, 2008



Satellite chlorophyll image with possible HAB areas shown by red polygon(s). Cell concentration sampling data from July 18 to 25 shown as red (high), orange (medium), yellow (low b), brown (low a), blue (very low b), purple (very low a), pink (present), and green (not present). For a list of cell count data providers and a key to the cell concentration categories, please see the HABFS bulletin guide:

[http://www.csc.noaa.gov/crs/habf/habfs\\_bulletin\\_guide.pdf](http://www.csc.noaa.gov/crs/habf/habfs_bulletin_guide.pdf)

Please note the following restrictions on all SeaWiFS imagery derived from CoastWatch.

1. Data are restricted to civil marine applications only; i.e. federal, state, and local government use/distribution is permitted.
2. Image products may be published in newspapers. Any other publishing arrangements must receive GeoEye approval via the CoastWatch Program.

## Conditions Report

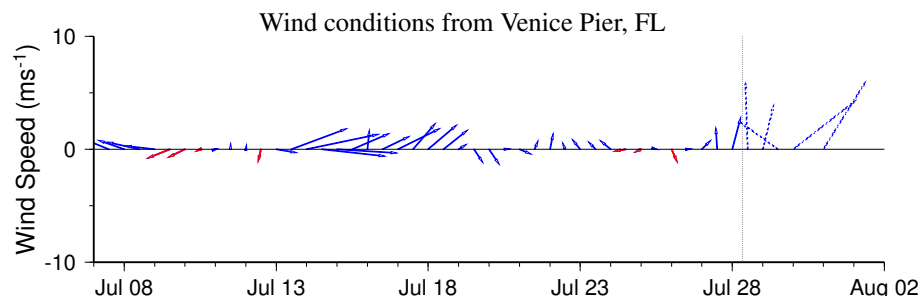
There is currently no indication of a harmful algal bloom at the coast in southwest Florida. No impacts are expected alongshore southwest Florida today through Sunday, August 3.

## Analysis

There is currently no indication of a harmful algal bloom at the coast in southwest Florida. No *Karenia brevis* was found in samples collected last week between Pinellas County and the Florida Keys, with the exception of background concentrations identified in a single Sarasota Bay sample on 7/22 (FWRI, MML, SCHD; 7/21-25). Cloud cover has obscured recent satellite imagery, limiting analysis. No impacts are expected along the coast of southwest Florida through Sunday, August 3. Conditions remain unfavorable for bloom formation through Friday, August 1.

Please note that SeaWiFS imagery is temporarily unavailable for display on this bulletin due to technical difficulties; MODIS imagery is shown on pages 1 and 2 of this bulletin.

~Fisher, Fenstermacher

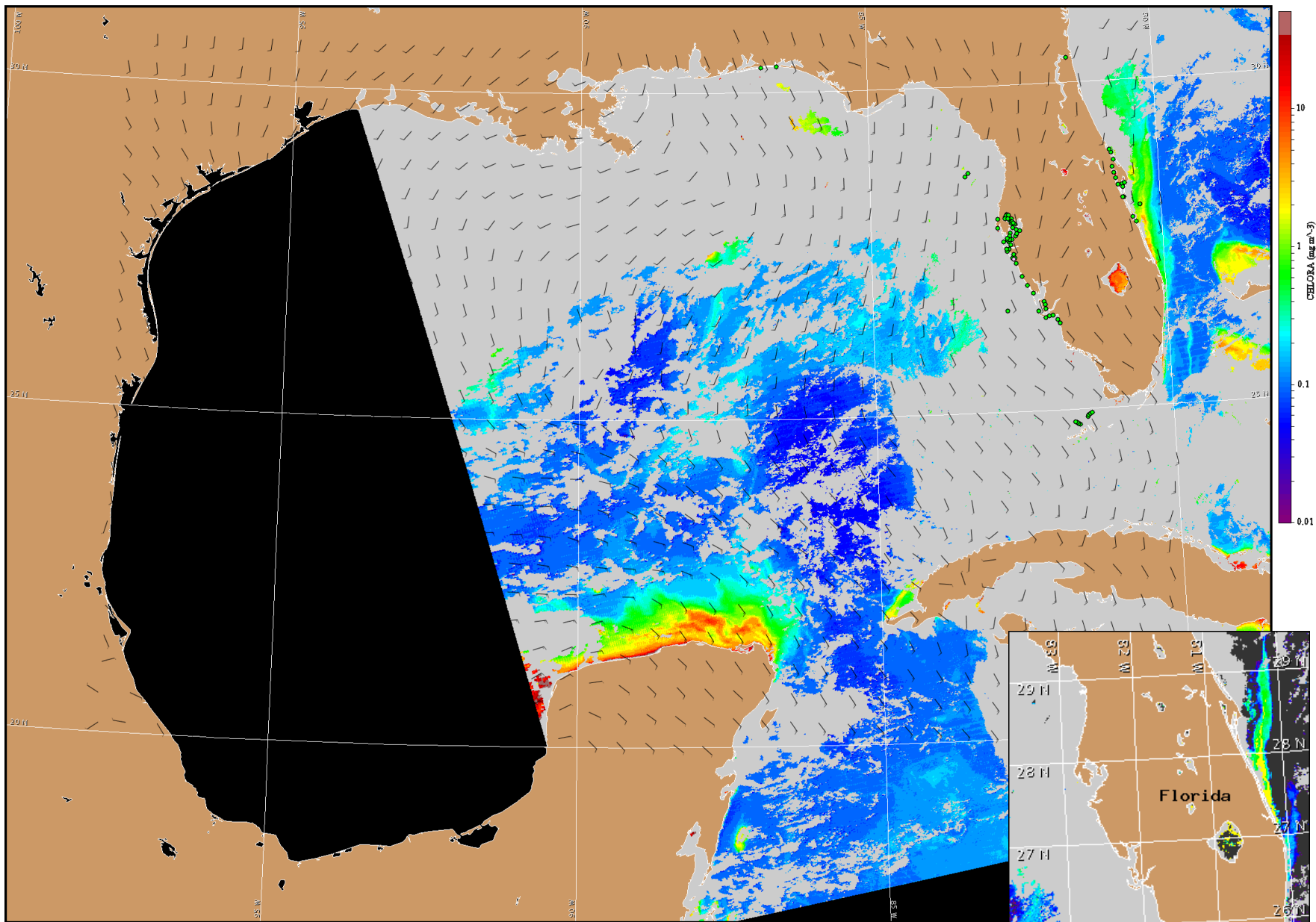


Wind speed and direction are averaged over 12 hours from buoy measurements. Length of line indicates speed; angle indicates direction. Red indicates that the wind direction favors upwelling near the coast. Values to the left of the dotted vertical line are measured values; values to the right are forecasts.

## Wind Analysis

South winds (10kn, 5m/s) today. Southwest winds (10kn) Tuesday and Wednesday. West winds Wednesday night through Friday (10-15kn, 5-8m/s).

To see previous bulletins and forecasts for other Harmful Algal Bloom Bulletin regions, visit the NOAA CoastWatch bulletin archive: [http://coastwatch.noaa.gov/hab/bulletins\\_ns.htm](http://coastwatch.noaa.gov/hab/bulletins_ns.htm)



Satellite chlorophyll image and forecast winds for July 29, 2008 06Z with Cell concentration sampling data from July 18 to 25 shown as red (high), orange (medium), yellow (low b), brown (low a), blue(very low b), purple (very low a), pink (present), and green (not present). For a list of cell count data providers and a key to the cell concentration categories, please see the HABFS bulletin guide: [http://www.csc.noaa.gov/crs/habf/habfs\\_bulletin\\_guide.pdf](http://www.csc.noaa.gov/crs/habf/habfs_bulletin_guide.pdf)

Verified and suspected HAB areas shown in red. Other areas of high chlorophyll concentration shown in yellow (see p. 1 analysis for interpretation).