



Gulf of Mexico Harmful Algal Bloom Bulletin

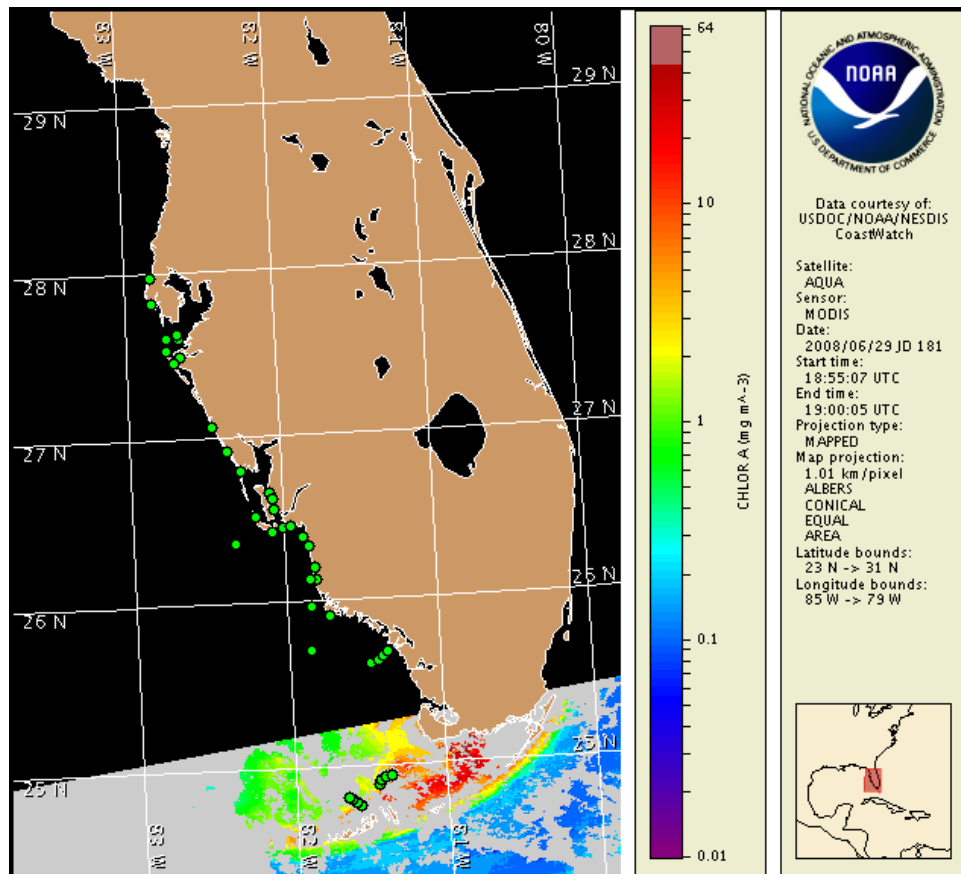
Region: South Florida

30 June 2008

NOAA Ocean Service

NOAA Satellites and Information Service

Last bulletin: June 23, 2008



Satellite chlorophyll image with possible HAB areas shown by red polygon(s). Cell concentration sampling data from June 20 to 25 shown as red (high), orange (medium), yellow (low b), brown (low a), blue(very low b), purple (very low a), pink (present), and green (not present). For a list of cell count data providers and a key to the cell concentration categories, please see the HABFS bulletin guide:

http://www.csc.noaa.gov/crs/habf/habfs_bulletin_guide.pdf

Please note the following restrictions on all SeaWiFS imagery derived from CoastWatch.

1. Data are restricted to civil marine applications only; i.e. federal, state, and local government use/distribution is permitted.
2. Image products may be published in newspapers. Any other publishing arrangements must receive GeoEye approval via the CoastWatch Program.

Conditions Report

There is no indication of a harmful algal bloom at the coast in southwest Florida. No impacts are expected alongshore southwest Florida today through Sunday, July 6.

Analysis

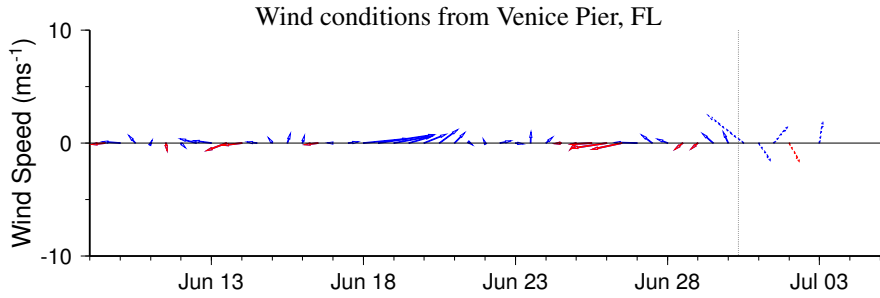
There is currently no indication of a harmful algal bloom at the coast in southwest Florida. No *Karenia brevis* was identified last week alongshore southwest Florida from Pinellas to Monroe County, including the Florida Keys (6/23-25; FWRI, SCHD, MML). Samples continue to report elevated concentrations of non-harmful algae along the coast from Pinellas to Monroe County. Recent imagery (6/24-30) is obscured by clouds, limiting analysis. Southeasterly to easterly winds are expected throughout the week. Bloom formation at the coast is unlikely today through Friday, July 4. No impacts are expected along the southwest Florida coast.

Please note that due to past technical difficulties, SeaWiFS imagery is temporarily unavailable for display on this bulletin; MODIS imagery is shown on pages 1 and 3 of this bulletin.

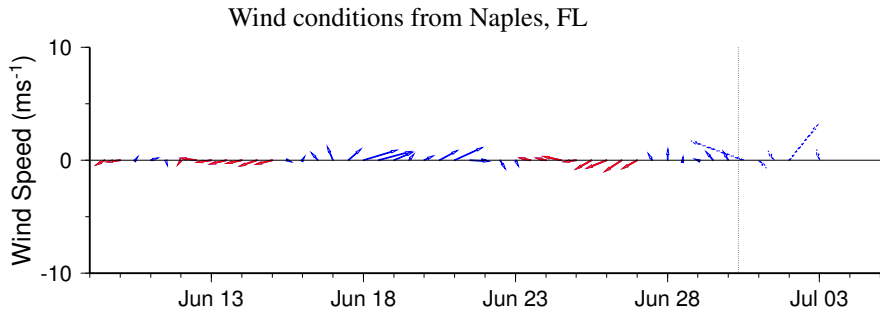
~Fisher, Urizar, Lindley

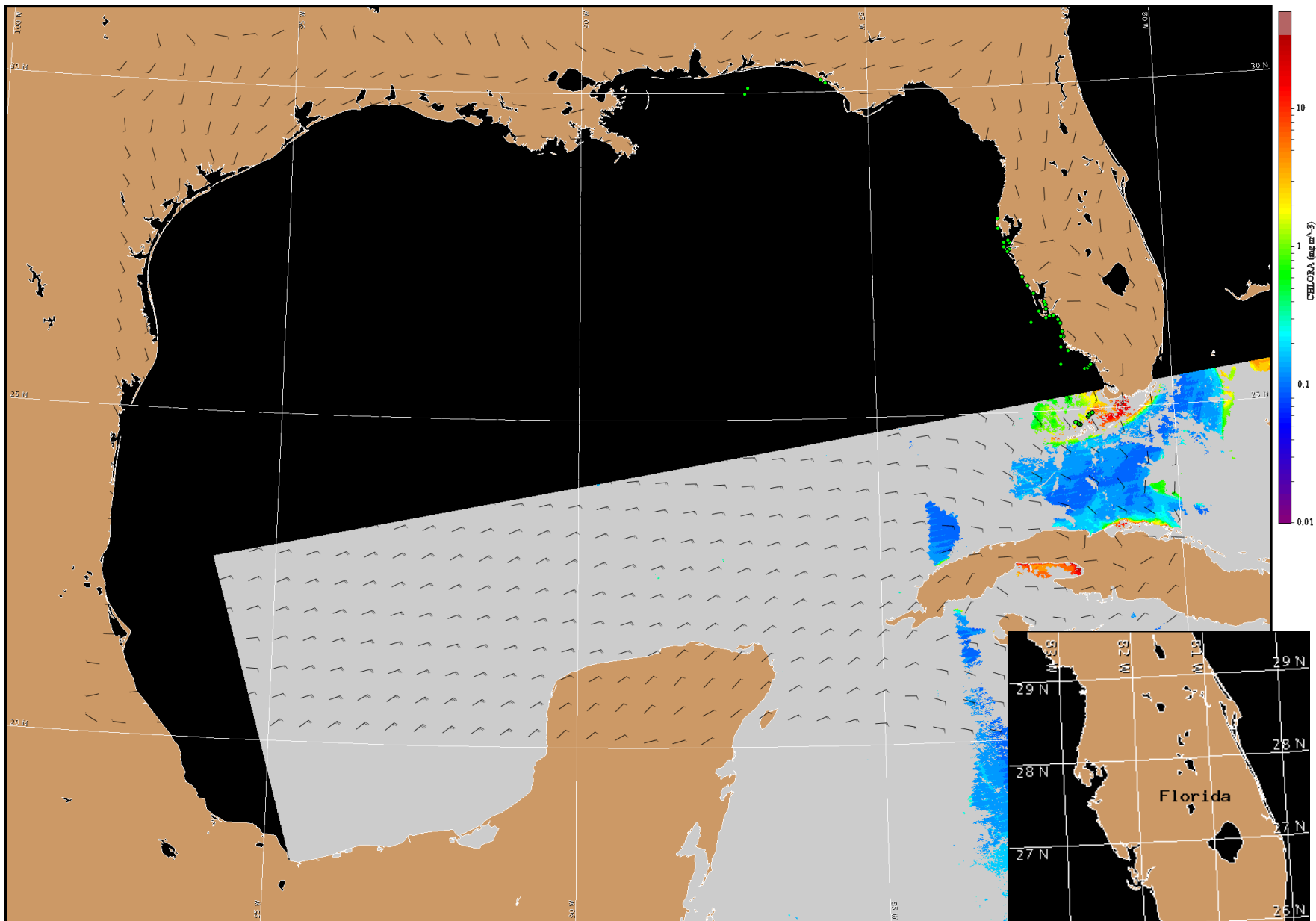
Wind Analysis

SW Florida Coast: South to southeast winds today, becoming west to southwest (5-10kn, 3-5m/s). Northwest winds tonight (5kn, 3m/s). Southeast to west winds Tuesday (5-10kn). Southeast to east winds Tuesday night (5-10kn). Southeast winds Wednesday (5-15kn, 3-8m/s). Southeast winds Thursday (5-10kn). East winds Thursday night (10-15kn, 5-8m/s). Southeast winds Friday (5-10kn).

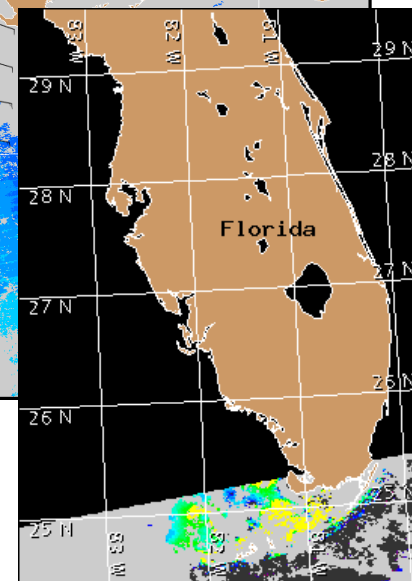


Wind speed and direction are averaged over 12 hours from buoy measurements. Length of line indicates speed; angle indicates direction. Red indicates that the wind direction favors upwelling near the coast. Values to the left of the dotted vertical line are measured values; values to the right are forecasts.





Satellite chlorophyll image and forecast winds for July 1, 2008 06Z with Cell concentration sampling data from June 20 to 25 shown as red (high), orange (medium), yellow (low b), brown (low a), blue (very low b), purple (very low a), pink (present), and green (not present). For a list of cell count data providers and a key to the cell concentration categories, please see the HABFS bulletin guide: http://www.csc.noaa.gov/crs/habf/habfs_bulletin_guide.pdf



Verified and suspected HAB areas shown in red. Other areas of high chlorophyll concentration shown in yellow (see p. 1 analysis for interpretation).