



Gulf of Mexico Harmful Algal Bloom Bulletin

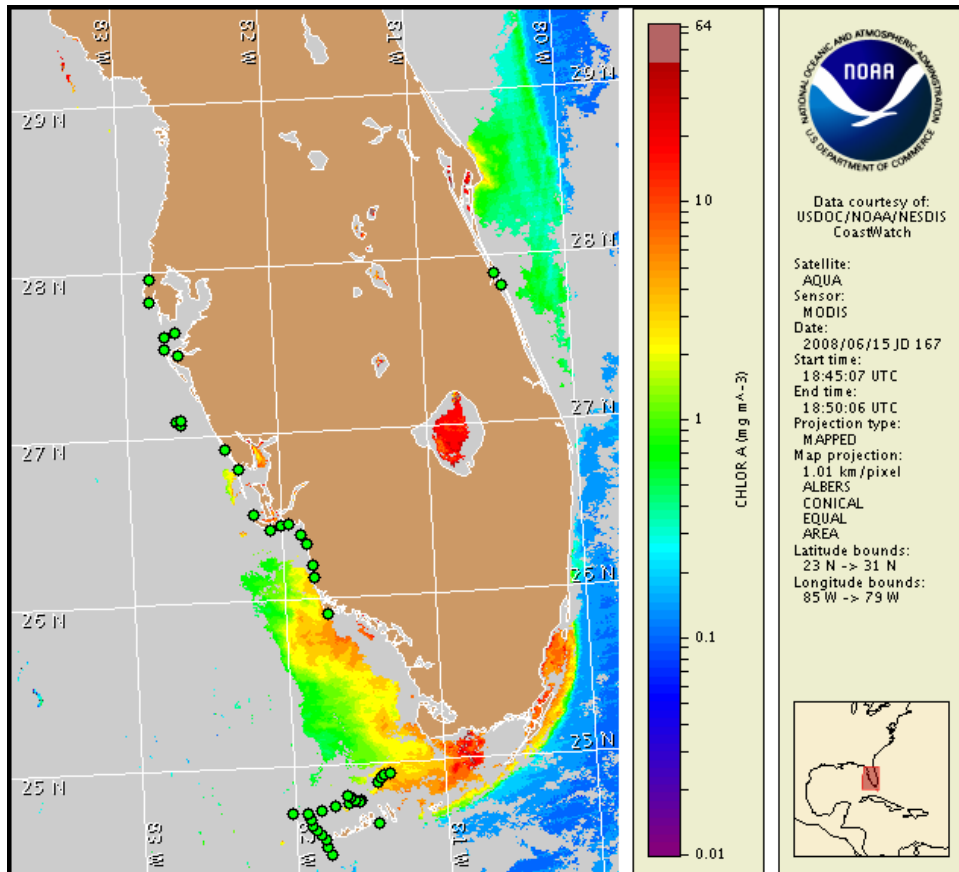
Region: South Florida

16 June 2008

NOAA Ocean Service

NOAA Satellites and Information Service

Last bulletin: June 9, 2008



Satellite chlorophyll image with possible HAB areas shown by red polygon(s). Cell concentration sampling data from June 9 to 11 shown as red (high), orange (medium), yellow (low b), brown (low a), blue (very low b), purple (very low a), pink (present), and green (not present). For a list of cell count data providers and a key to the cell concentration categories, please see the HABFS bulletin guide:

http://www.csc.noaa.gov/crs/habf/habfs_bulletin_guide.pdf

Please note the following restrictions on all SeaWiFS imagery derived from CoastWatch.

1. Data are restricted to civil marine applications only; i.e. federal, state, and local government use/distribution is permitted.
2. Image products may be published in newspapers. Any other publishing arrangements must receive GeoEye approval via the CoastWatch Program.

Conditions Report

SW Florida: There is no indication of a harmful algal bloom at the coast in southwest Florida. No impacts are expected alongshore southwest Florida today through Sunday, June 22.

Analysis

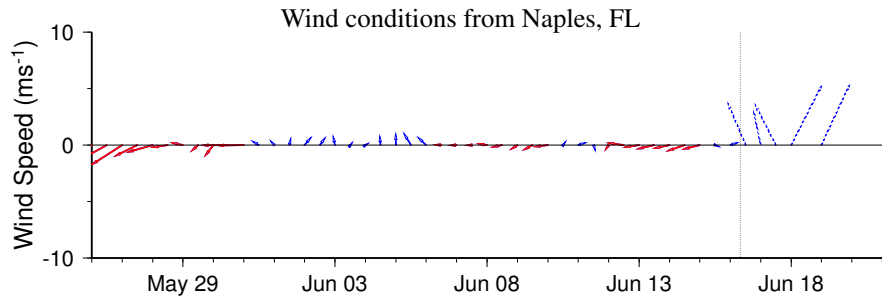
There is currently no indication of a harmful algal bloom at the coast in southwest Florida. Samples collected last week at the coast from Pinellas County to the Florida Keys, and offshore Sarasota and Monroe Counties contained no *Karenia brevis* (6/9-11, FWRI). Chlorophyll levels remain elevated in patches along the coast of southwest Florida, due to the presence of nonharmful algae. Cloudy imagery over the past few days limits the analysis of these nonharmful features, however elevated to high chlorophyll (6-10 $\mu\text{g/L}$) features are visible in Collier County at 25°46'14.7"N 81°54'9"W (based on MODIS imagery from 6/15) and Pinellas County 27° 46'41.6"N 82°51'14.9"W (based on MODIS imagery from 6/14). Reports of discolored water are possible throughout the week alongshore Charlotte, Lee, and Collier Counties. Bloom formation at the coast is unlikely today through Friday, June 20. No impacts are expected along the coast.

Please note that due to past technical difficulties, SeaWiFS imagery is temporarily unavailable for display on this bulletin; MODIS imagery is shown on pages 1 and 3 of this bulletin.

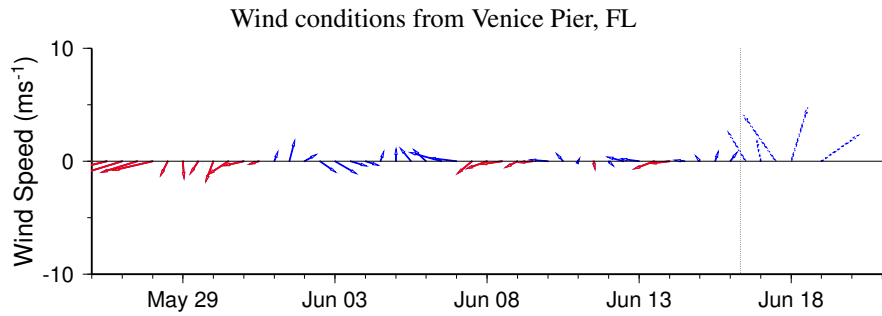
- Allen, Fisher

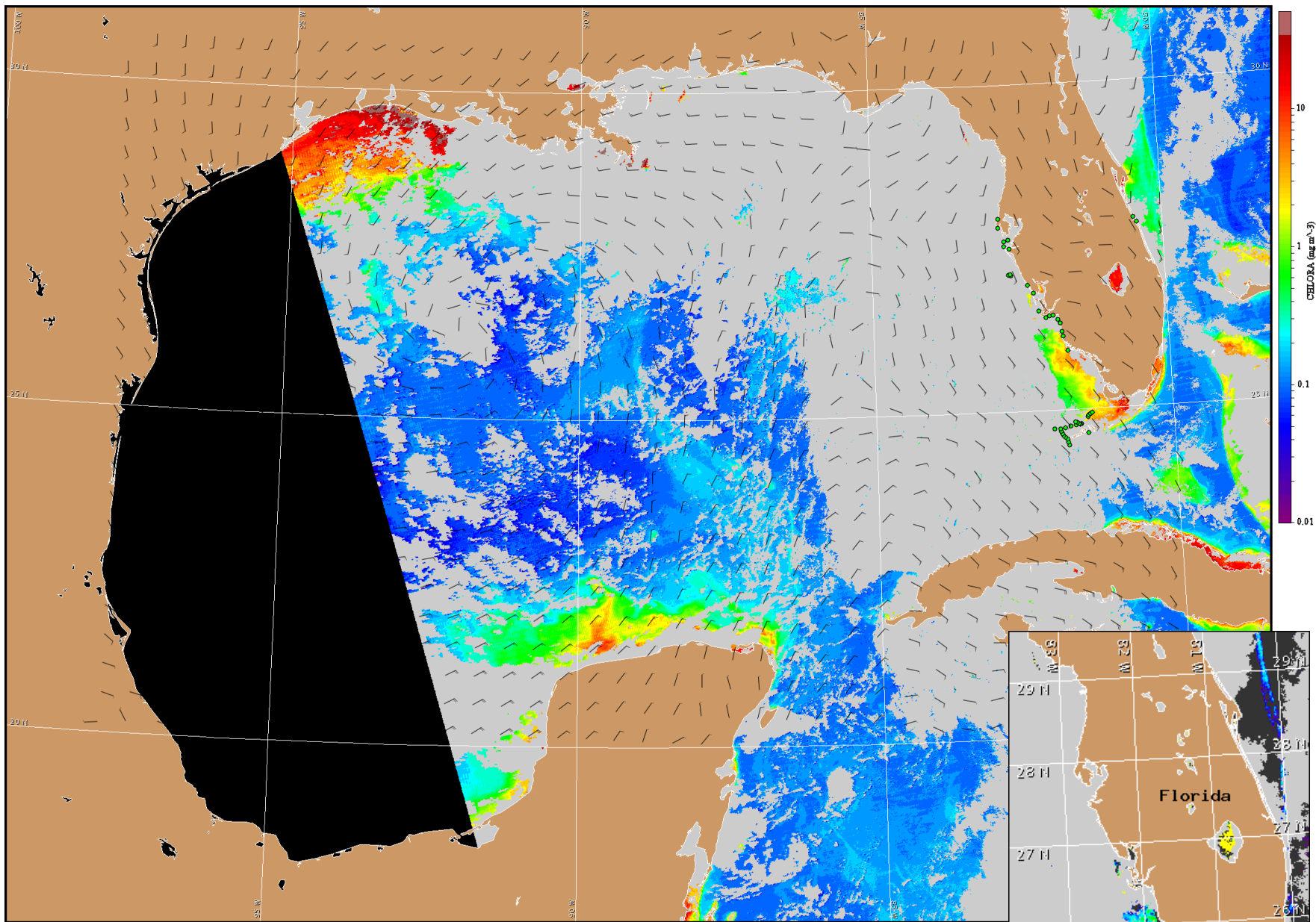
Wind Analysis

South to southwesterly winds today at 5 kn (3 m/s) becoming variable tonight. Westerly winds Tuesday through Thursday (5-10 kn, 3-5 m/s) becoming southwesterly to westerly on Friday (<5 kn, 3 m/s).

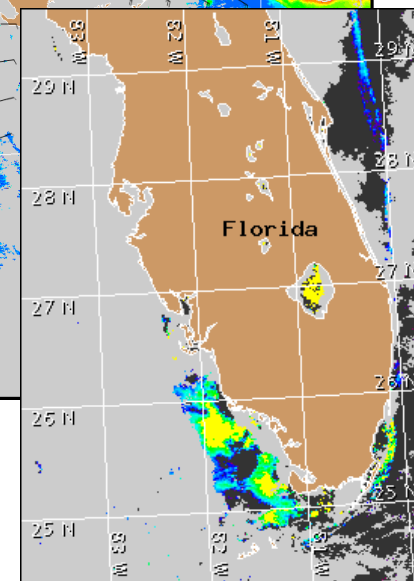


Wind speed and direction are averaged over 12 hours from buoy measurements. Length of line indicates speed; angle indicates direction. Red indicates that the wind direction favors upwelling near the coast. Values to the left of the dotted vertical line are measured values; values to the right are forecasts.





Satellite chlorophyll image and forecast winds for June 17, 2008 06Z with Cell concentration sampling data from June 9 to 11 shown as red (high), orange (medium), yellow (low b), brown (low a), blue(very low b), purple (very low a), pink (present), and green (not present). For a list of cell count data providers and a key to the cell concentration categories, please see the HABFS bulletin guide: http://www.csc.noaa.gov/crs/habf/habfs_bulletin_guide.pdf



Verified and suspected HAB areas shown in red. Other areas of high chlorophyll concentration shown in yellow (see p. 1 analysis for interpretation).