



Gulf of Mexico Harmful Algal Bloom Bulletin

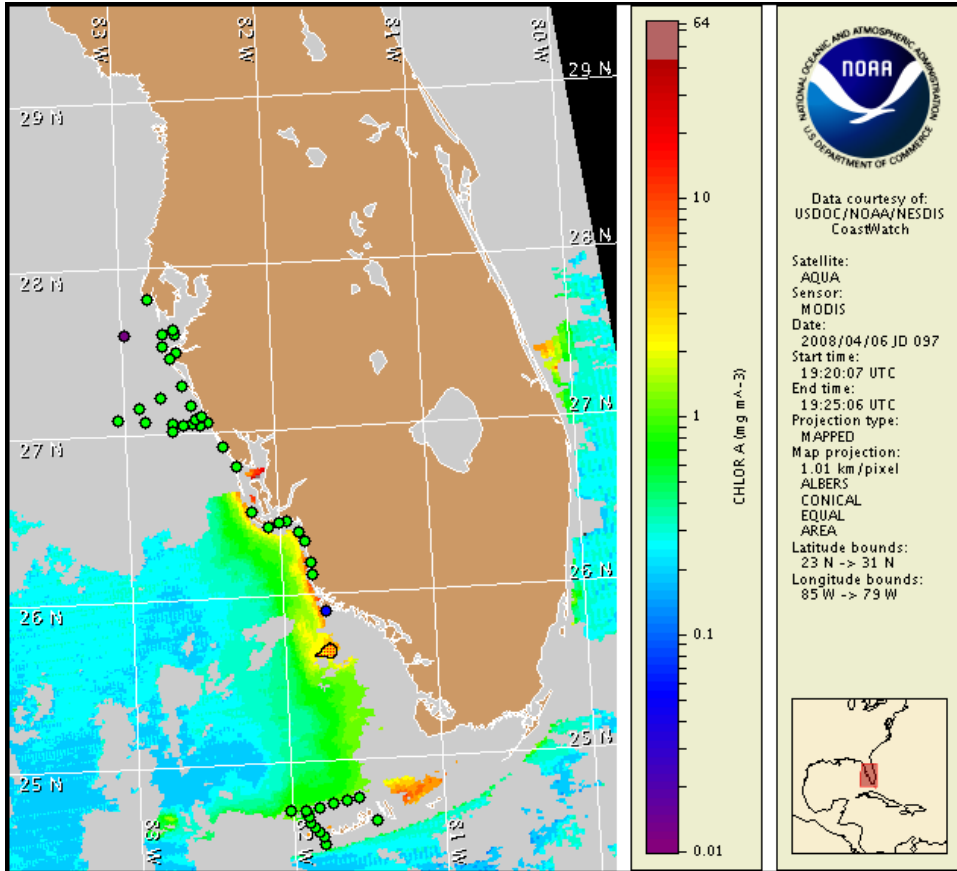
Region: South Florida

8 April 2008

NOAA Ocean Service

NOAA Satellites and Information Service

Last bulletin: April 7, 2008



Satellite chlorophyll image with possible HAB areas shown by red polygon(s). Cell concentration sampling data from March 29 to April 7 shown as red (high), orange (medium), yellow (low b), brown (low a), blue (very low b), purple (very low a), pink (present), and green (not present). For a list of cell count data providers and a key to the cell concentration categories, please see the HABFS bulletin guide:

http://www.csc.noaa.gov/crs/habf/habfs_bulletin_guide.pdf

Please note the following restrictions on all SeaWiFS imagery derived from CoastWatch.

1. Data are restricted to civil marine applications only; i.e. federal, state, and local government use/distribution is permitted.
2. Image products may be published in newspapers. Any other publishing arrangements must receive GeoEye approval via the CoastWatch Program.

Conditions Report

A harmful algal bloom has been identified in central Collier County. No impacts are expected alongshore southwest Florida today through Thursday, April 10.

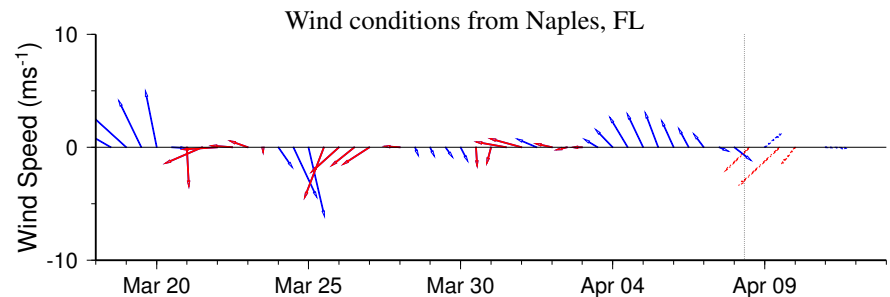
Analysis

This supplemental bulletin is being issued to report a confirmed bloom in central Collier County.

SW Florida: A harmful algal bloom has been identified in central Collier County. Samples collected alongshore central Collier County on 4/7 contained 'low b' levels of *Karenia brevis* at Marco Island (FWRI). Additional samples collected at Barefoot Beach, Clam Pass and Naples Pier in northern Collier County indicate that *K. brevis* is not present. All samples also indicate the presence of numerous species of non-harmful algae. Recent MODIS imagery (4/6) indicates that chlorophyll levels are elevated ($> 5.0 \mu\text{g/L}$) alongshore Collier County from $26^{\circ}15'40''\text{N}$, $81^{\circ}52'30''\text{W}$ to $25^{\circ}55'12''\text{N}$, $81^{\circ}46'59''\text{W}$ and extending offshore to $25^{\circ}36'58''\text{N}$, $81^{\circ}42'35''\text{W}$. Slight northward transport of this feature is possible today through Thursday, April 10.

Please note that due to technical difficulties, SeaWiFS imagery is temporarily unavailable; MODIS imagery is displayed on pages 1 and 2 of this bulletin.

Urizar, Fisher

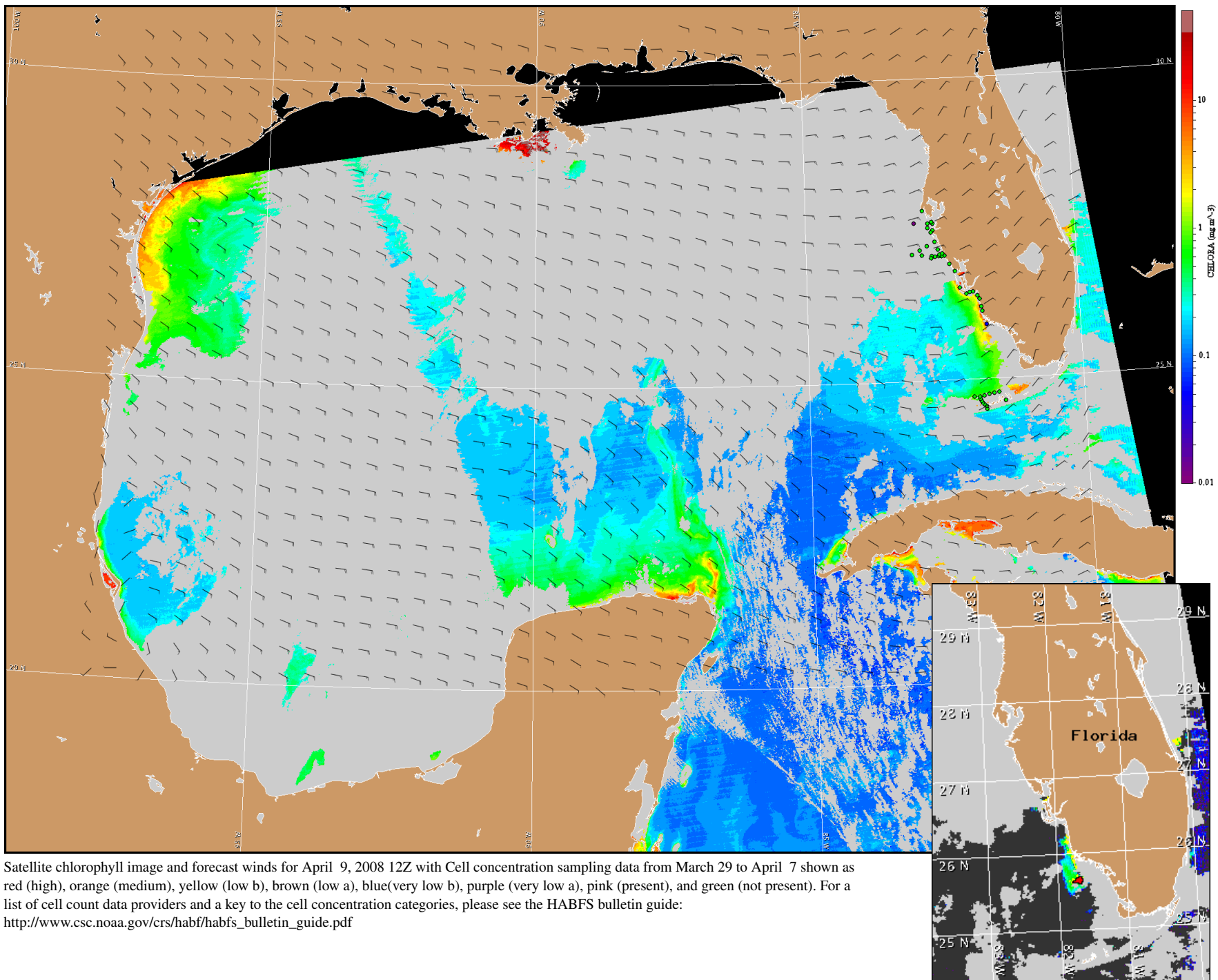


Wind speed and direction are averaged over 12 hours from buoy measurements. Length of line indicates speed; angle indicates direction. Red indicates that the wind direction favors upwelling near the coast. Values to the left of the dotted vertical line are measured values; values to the right are forecasts.

Wind Analysis

SW Florida: Easterly winds today through Thursday (5-15 kn, 3-8 m/s). Southeasterly winds Friday and Saturday (5-10 kn, 3-5 m/s).

To see previous bulletins and forecasts for other Harmful Algal Bloom Bulletin regions, visit the NOAA CoastWatch bulletin archive: http://coastwatch.noaa.gov/hab/bulletins_ns.htm



Satellite chlorophyll image and forecast winds for April 9, 2008 12Z with Cell concentration sampling data from March 29 to April 7 shown as red (high), orange (medium), yellow (low b), brown (low a), blue(very low b), purple (very low a), pink (present), and green (not present). For a list of cell count data providers and a key to the cell concentration categories, please see the HABFS bulletin guide: http://www.csc.noaa.gov/crs/habf/habfs_bulletin_guide.pdf

Verified and suspected HAB areas shown in red. Other areas of high chlorophyll concentration shown in yellow (see p. 1 analysis for interpretation).