

Gulf of Mexico Harmful Algal Bloom Bulletin

19 February 2008

NOAA Ocean Service

NOAA Satellites and Information Service

Last bulletin: February 11, 2008

Conditions Report

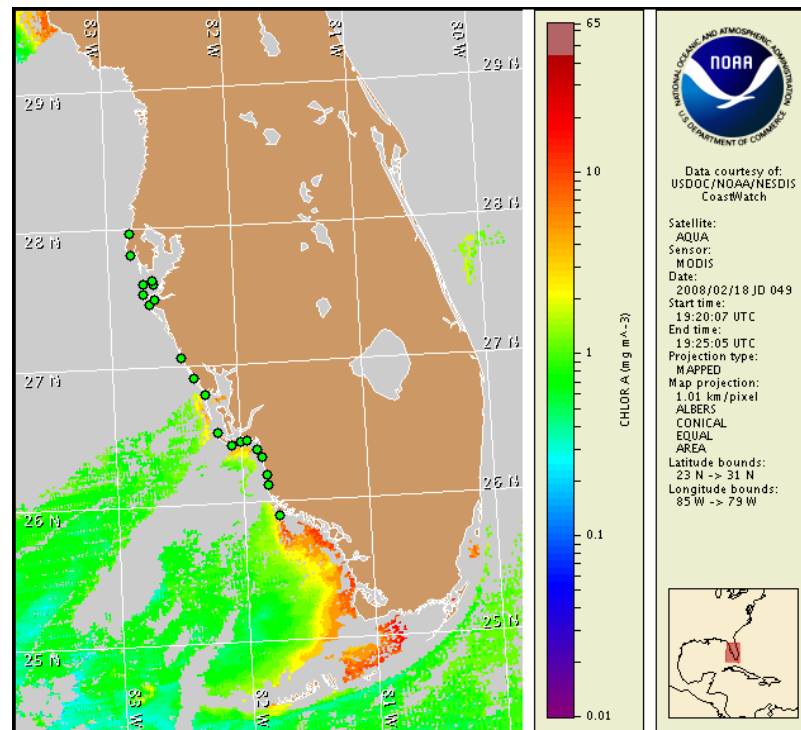
SW Florida: There is currently no indication of a harmful algal bloom along the coast in southwest Florida. No impacts are expected today through Sunday, February 24.

NE Florida: There is currently no indication of a harmful algal bloom along the coast in northeast Florida. No impacts are expected today through Sunday, February 24.

Analysis

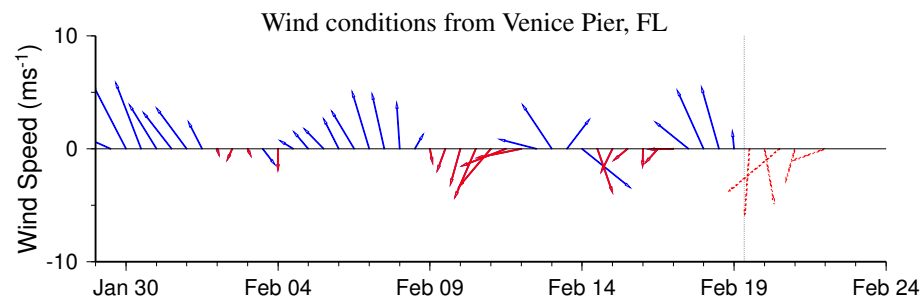
SW Florida: There is currently no indication of a harmful algal bloom alongshore southwest Florida. Sample results from onshore Pinellas, Manatee, Sarasota, Charlotte, Lee and Collier Counties indicate that *Karenia brevis* is not present and that numerous species of non-harmful algae are present at varying concentrations (FWRI, 2/11-13; SCHD, 2/11). Sample results from the Florida Keys indicate that *K. brevis* is also not present onshore or offshore (MML, 2/7-8). MODIS imagery (2/18) is predominantly obscured by clouds in southwest Florida making it difficult to continue tracking the two elevated chlorophyll features previously located far offshore Pasco and northern Pinellas Counties and far offshore northern Sarasota County. Please note that due to technical difficulties, SeaWiFS imagery is temporarily unavailable; MODIS imagery is displayed on pages 1 and 2 of this bulletin.

Urizar, Keller



Satellite chlorophyll image with possible HAB areas shown by red polygon(s). Cell concentration sampling data from February 11 to 13 shown as red (high), orange (medium), yellow (low b), brown (low a), blue (very low b), purple (very low a), pink (present), and green (not present). For a list of cell count data providers and a key to the cell concentration categories, please see the HABFS bulletin guide:

http://www.csc.noaa.gov/crs/habf/habfs_bulletin_guide.pdf

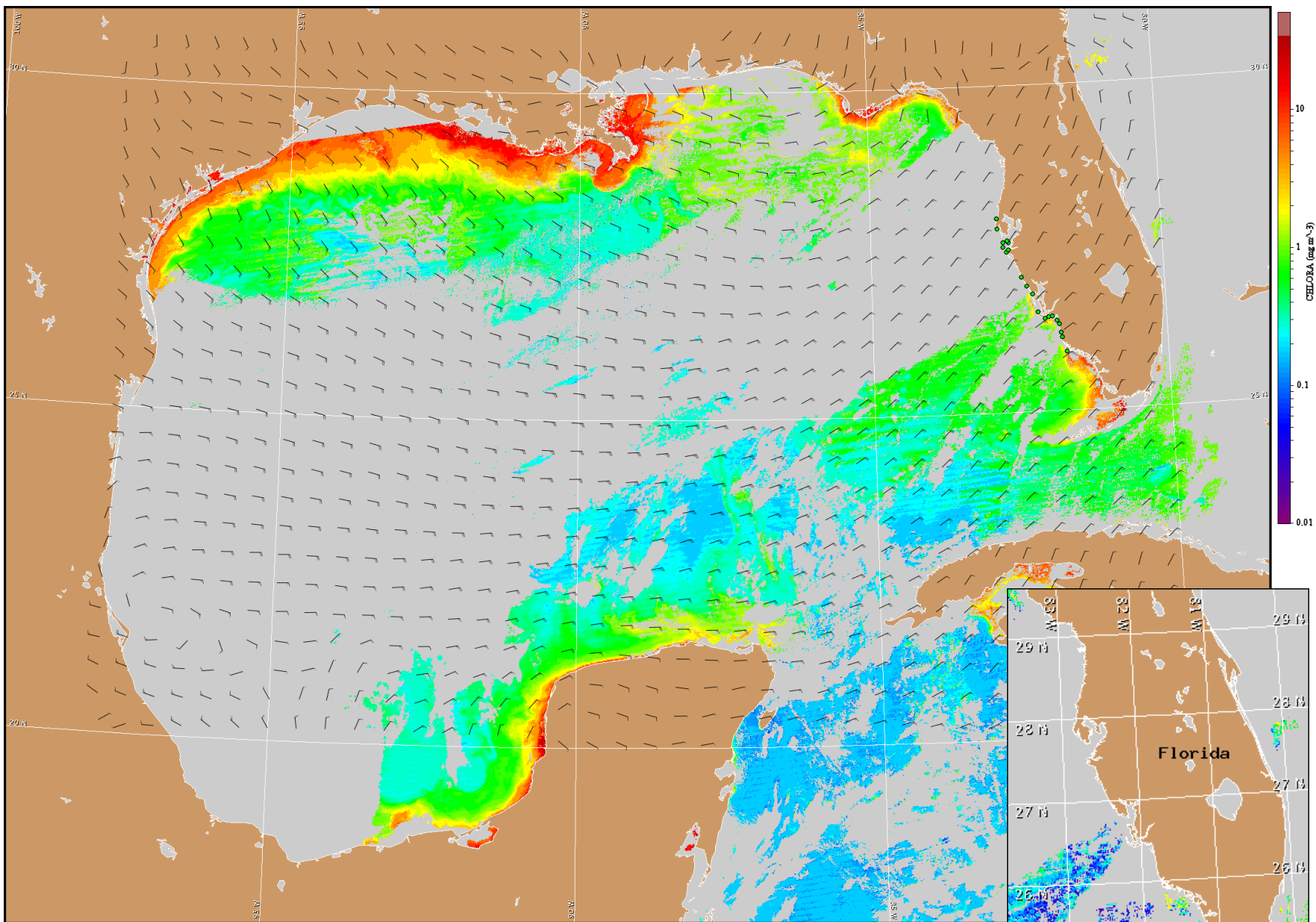


Wind speed and direction are averaged over 12 hours from buoy measurements. Length of line indicates speed; angle indicates direction. Red indicates that the wind direction favors upwelling near the coast. Values to the left of the dotted vertical line are measured values; values to the right are forecasts.

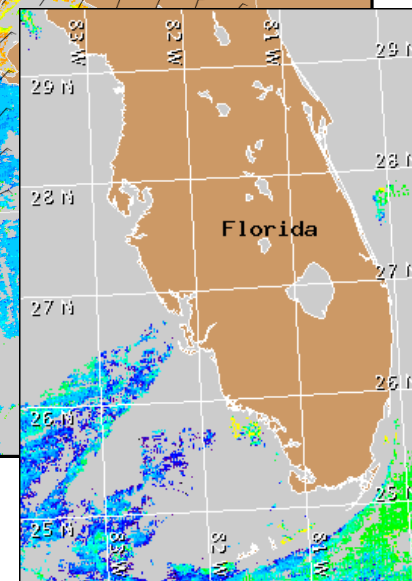
SW Florida: Northerly winds today (15-20 kn, 8-10 m/s). Northeasterly winds tonight and Wednesday (15 kn, 8 m/s). Easterly winds Wednesday night (15 kn). Southeasterly winds Thursday (10-15 kn, 5-8 m/s). Southerly winds Friday (10-15 kn). Northwesterly winds Saturday (15 kn).

Please note the following restrictions on all SeaWiFS imagery derived from CoastWatch.

1. Data are restricted to civil marine applications only; i.e. federal, state, and local government use/distribution is permitted.
2. Image products may be published in newspapers. Any other publishing arrangements must receive GeoEye approval via the CoastWatch Program.



Satellite chlorophyll image and forecast winds for February 20, 2008 06Z with Cell concentration sampling data from February 11 to 13 shown as red (high), orange (medium), yellow (low b), brown (low a), blue(very low b), purple (very low a), pink (present), and green (not present). For a list of cell count data providers and a key to the cell concentration categories, please see the HABFS bulletin guide: http://www.csc.noaa.gov/crs/habf/habfs_bulletin_guide.pdf



Verified and suspected HAB areas shown in red. Other areas of high chlorophyll concentration shown in yellow (see p. 1 analysis for interpretation).